

Thank you for your choice of the Bachmann Branchline Class 416 2-EPB electric multiple unit.

## General

The mechanism of this model requires running in (without a load) for approximately half an hour in each direction at moderate speed to allow the gear train to bed in.

When required, sparingly lubricate the motor bearings using plastic compatible light oil and the gear train with model grease.

Bachmann Branchline trains perform best on second radius (approx 18 inches) or greater.

## Body removal

The body is secured by clips at 4 points on either side of the body as shown on page 3. Remove the two screws under the cab and remove the wire conduit running from body to chassis from its hole in the chassis.

Ease the sides of the body away from the solebar, if necessary slide strips of thin card or plastic each side as each clip is released to hold the clips open. Take care to avoid damage to the underfloor equipment.

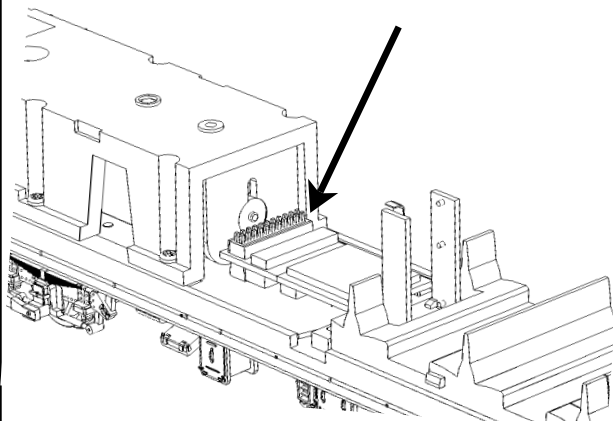
## DCC Decoder fitting to DC model

This model has a 21-pin connector for a decoder.

It is recommended to run in a DC model first on a DC power supply before installing a decoder.

Carefully remove the blanking board and locate the decoder onto the pins on the PCB following the instructions included with the decoder: the decoder fits so that the contact block is uppermost.

Remove blanking plug and fit the decoder to the pins with the black fitting uppermost



## Control of lights with DCC

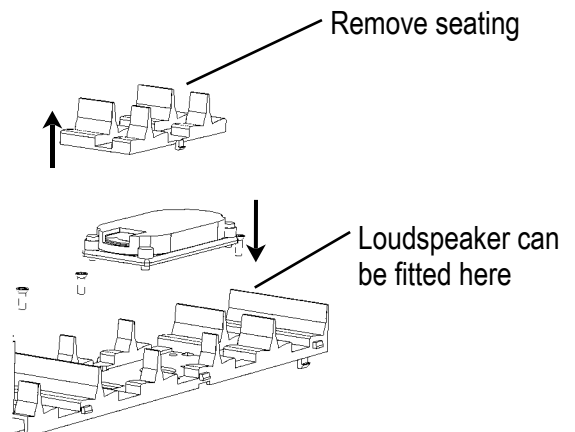
F0 - Blind lights and interior lights on / off

## Hints for best results

The operation of a DCC model requires that the power to the model is not interrupted. Track, wheels and pickups should be kept clean and all rail joiners must give good connections between sections of track. Improved reliability of DCC performance may be obtained by deselecting DC operation of the model on the decoder. This is usually controlled by CV29, Bit 2

## Fitting DCC Sound decoder

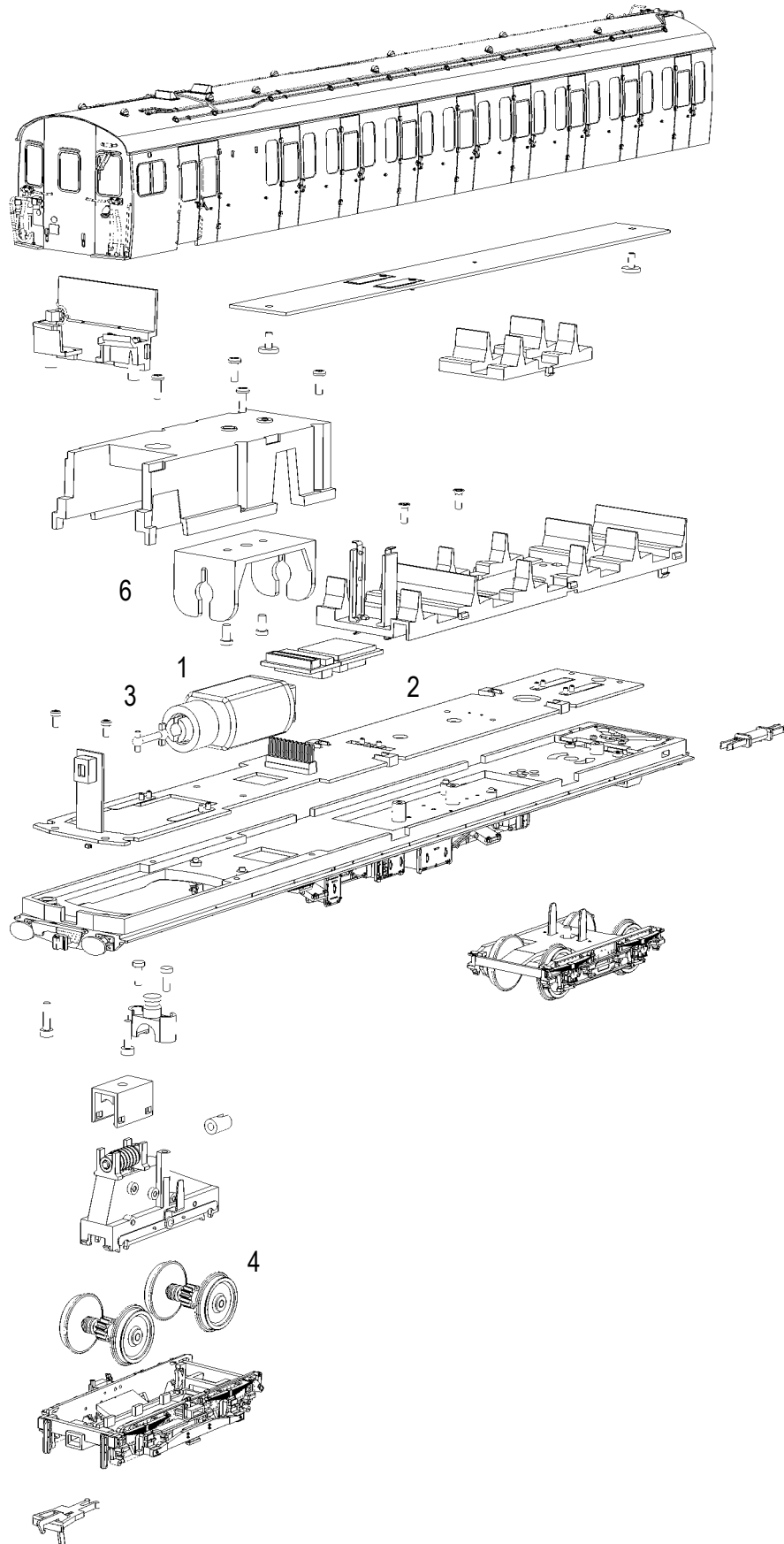
There is space for an aftermarket loudspeaker by removing the middle of the seating (below)



## Bachmann Europe Plc

Moat Way  
Barwell  
Leicestershire  
LE9 8EY  
01455 841756  
www.bachmann.co.uk

E3137-IS001  
07/11 Rev 2



## Replacement Parts

1	motor	375-001
2	PCB 21pin	375-002
3	driveshaft	375-003
4	driving wheels	375-004
5	bogie complete	375-005
6	motor bracket	375-006

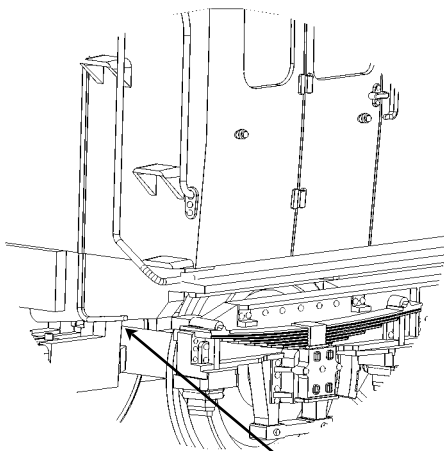
When ordering parts please quote the catalogue number together with the livery of the model (if appropriate) and number of the part required.

Parts are subject to availability.

Parts for this model available in retail packs:

Couplings	item ref 36-030
21 pin blanking plug	item ref 36-058
Drawbar	item ref 36-062

**The model should be handled carefully as it has many finely detailed parts. It is not suitable for persons under 14 years.**



E3137-IS002  
10/15 Rev 2

## Location of body clips

Remove the two screws under the cab

Ease sides away from solebar: front first and work towards the back

