

Thank you for your choice of the Bachmann Branchline BR Standard 3MT 2-6-2 tank locomotive.

### Running In

The mechanism of this model requires running in (without a load) for approximately 1 hour in each direction at moderate speed.

### Curves

Bachmann Branchline locomotives are not suitable for use on track tighter than second radius (approx 18 inches).

### Body removal

Remove the three screws indicated on the diagram at front and rear of the baseplate.

### DCC Decoder fitting to non DCC fitted loco

This model has an 8-pin NMRA/NEM socket for a decoder with an appropriate plug. The plug should be aligned so that Pin 1 (Orange wire) is aligned to the mark on the PCB. Note that the locomotive will run backwards if the decoder is reversed. The decoder fits into the smokebox of the model.

We recommend that the running in as above be carried out using a DC power supply before moving on to fit a DCC decoder.

### Lubrication

When required, sparingly lubricate the motor bearings using plastic compatible light oil and the gear train with model grease.

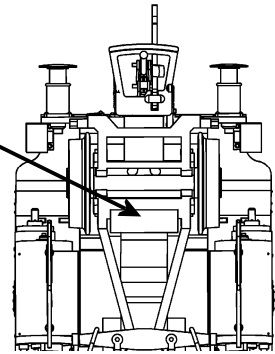
### Buffer beam pipes and front footsteps.

The locomotive vacuum pipes fit and front footsteps fit as shown. The front steps may not be suitable for tight curves - check before fitting permanently.

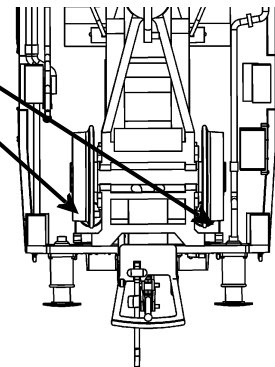
**The model should be handled carefully as it has many finely detailed parts. It is not suitable for persons under 14 years.**

### Location of body securing screws

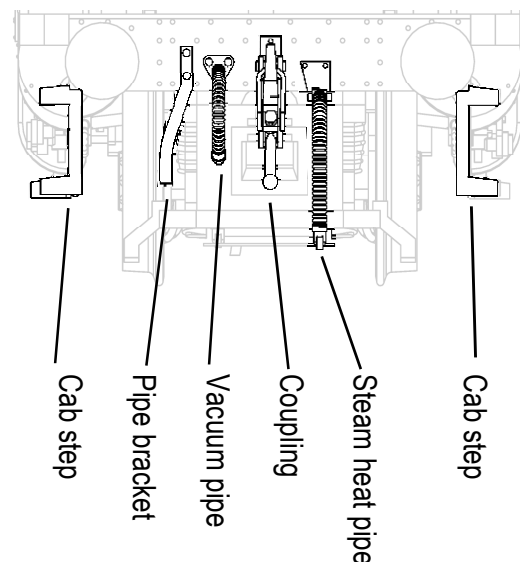
Front screw just ahead of front cylinders



Rear screws either side of chassis by buffer beam

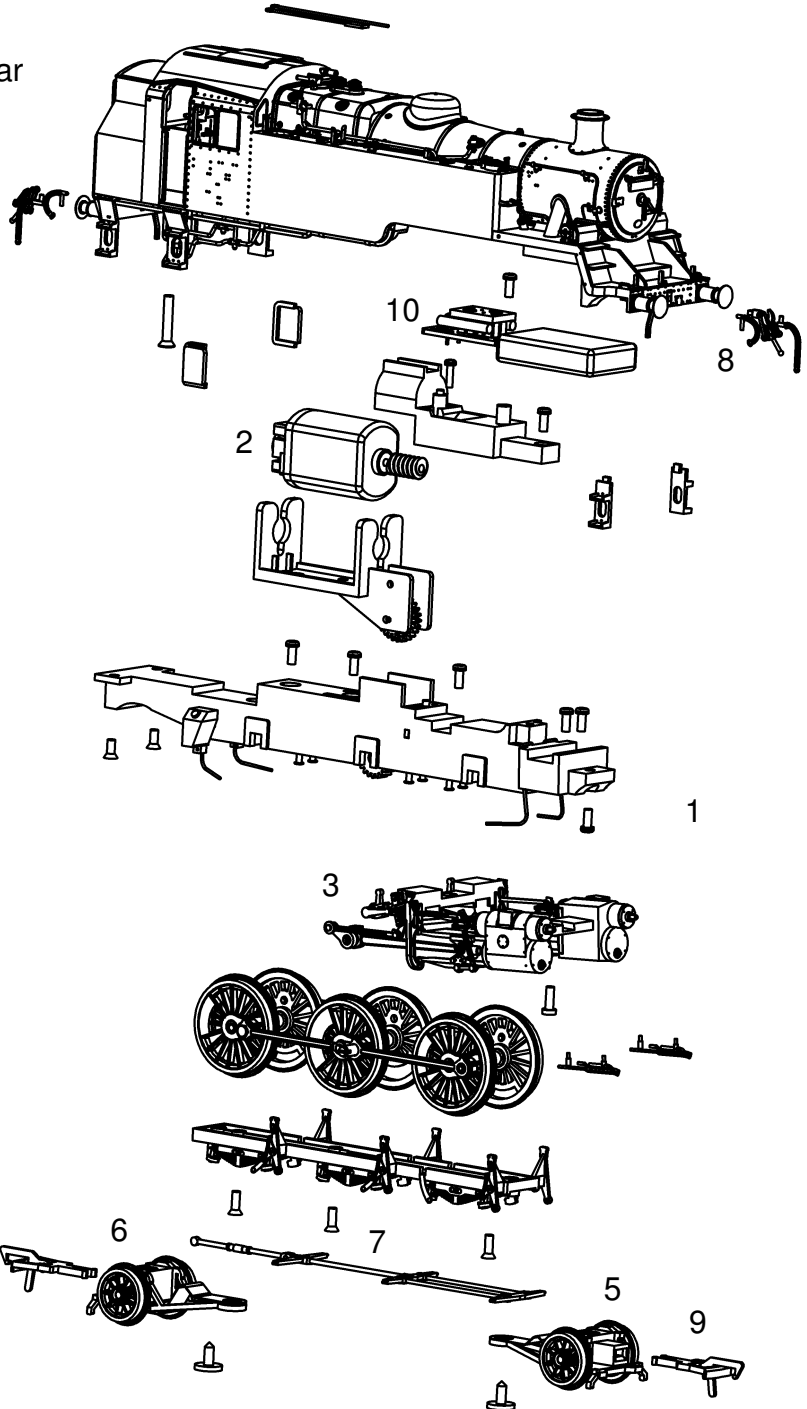


### Location of vacuum pipes and steps etc



## Parts

- 1 975-103 cylinders / valve gear
- 2 975-106 motor
- 3 975-117 driving wheels
- 4 975-118 baseplate
- 5 975-121 front pony truck
- 6 975-122 rear pony truck
- 7 975-123 loco brake rods
- 8 975-124 accessory pack
- 9 BL1999 coupling
- 10 350-004 circuit board



### Replacement parts

When ordering parts please quote the catalogue number together with the livery of the model (if appropriate) and number of the part required. Parts are subject to availability. Packets of couplers (item 36-030) and buffers (item 36-032) suitable for this model are available from retailers.

### Bachmann Europe Plc

Moat Way, Barwell, Leicestershire,  
LE9 8EY  
01455 841756  
www.bachmann.co.uk  
BR 3MT 2-6-2T rev 1 08/09  
E3197-IS001

Fire irons are carried in brackets on right hand side tank top

