



GWR 6400 Class 0-6-0 Pannier Tank Locomotive

Thank you for your choice of the Bachmann Branchline 6400 Class 0-6-0 Pannier Tank locomotive.

Running in

The mechanism of this model requires running in (without a load) for approximately 1 hour in each direction at moderate speed.

Curves

Bachmann Branchline locomotives perform best on curves of second radius or greater (approx. 18 inches / 450 mm).

Bodyshell removal

Remove the screws as indicated on the diagram (right).

DCC Decoder fitting

This model has a 6-pin NEM651 socket for a decoder. Remove the DC blanking plug and fit the decoder aligning to the numbers on the socket.

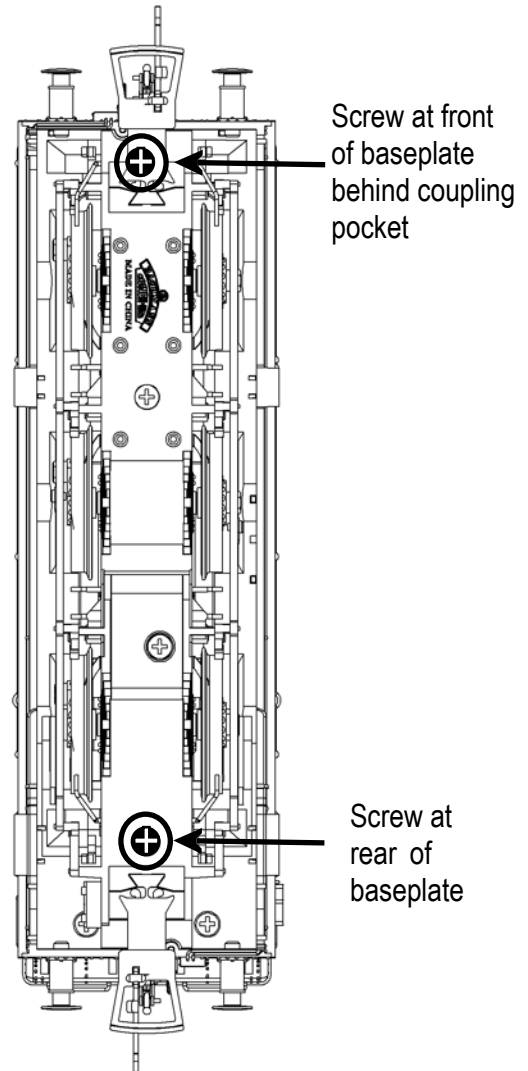
We recommend that the running in as above be carried out using a DC power supply before moving on to fit a DCC decoder

Lubrication

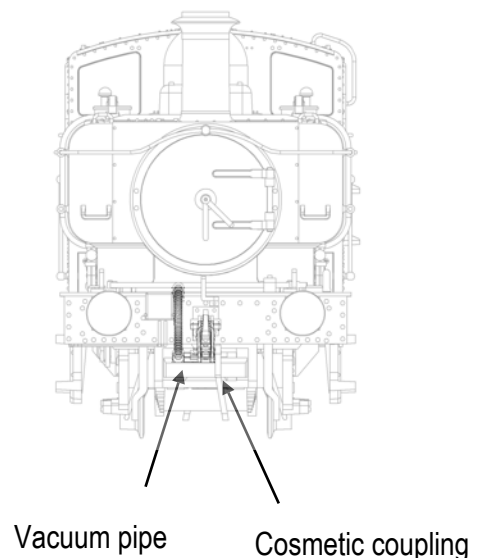
When required, sparingly lubricate the motor bearings using plastic compatible light oil and the gear train with model grease.

The model should be handled carefully as it has many finely detailed parts. It is not suitable for persons under 14 years.

Bodyshell removal



Location of add on parts



Parts

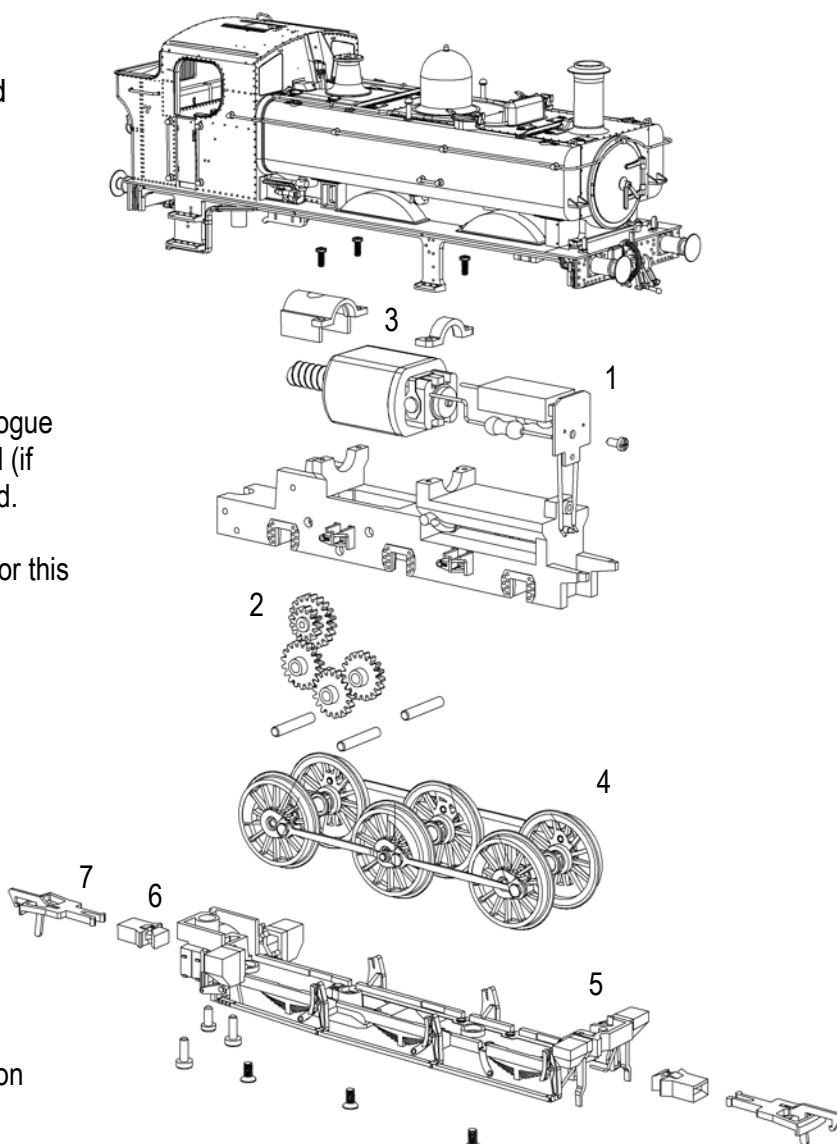
- 1 630-106 motor / circuit board
- 2 630-112 gears
- 3 630-113 motor clips
- 4 630-117 driving wheels
- 5 630-118 baseplate
- 6 NEM pocket
- 7 coupling

Replacement parts

When ordering parts please quote the catalogue number together with the livery of the model (if appropriate) and number of the part required.

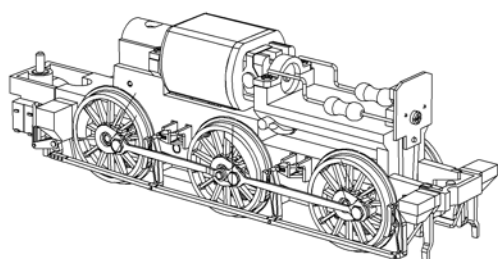
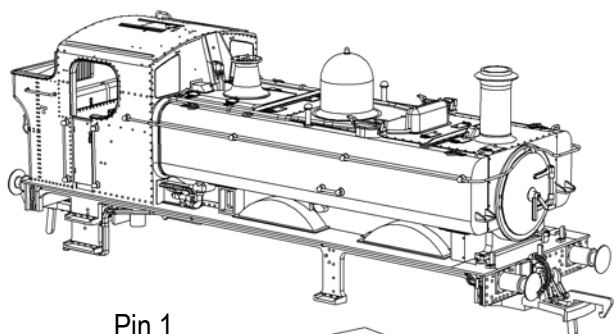
Parts are subject to availability.

Packets of couplers (item 36-030) suitable for this model are available from retailers.



DCC decoder fitting

Remove the DC blanking plug and fit the decoder aligning with the marked numbers on the socket.



Bachmann Europe Plc

Moat Way, Barwell, Leicestershire, LE9 8EY

01455 841756

www.bachmann.co.uk

6400 Class rev 1 07/14

E3163-IS001