

Thank you for your choice of the Bachmann Branchline Fowler 7F 2-8-0 locomotive.

Running in

The mechanism of this model requires running in (without a load) for approximately 1 hour in each direction at moderate speed.

Curves

Bachmann Branchline locomotives perform best on curves of second radius or greater (approx. 18 inches / 450 mm).

Body removal

Remove the screws at front and back of the chassis as indicated on the diagrams (right).

DCC Decoder fitting to non DCC fitted loco

This model has an 21-pin socket for a decoder. Remove the DC blanking plug and fit the decoder to the pins with the black fitting uppermost. We recommend that the running in as above be carried out using a DC power supply before moving on to fit a DCC decoder

Lubrication

When required, sparingly lubricate the motor bearings using plastic compatible light oil and the gear train with model grease.

Replacement parts

When ordering parts please quote the catalogue number together with the livery of the model (if appropriate) and number of the part required.

Parts are subject to availability.

Packets of couplers (item 36-030) and buffers (item 36-032) suitable for this model are available from retailers.

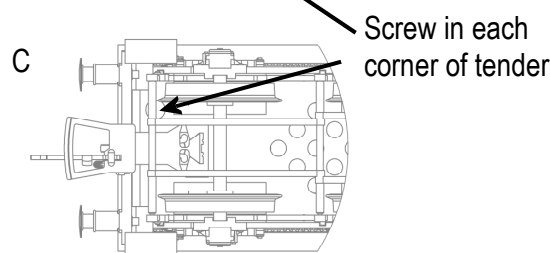
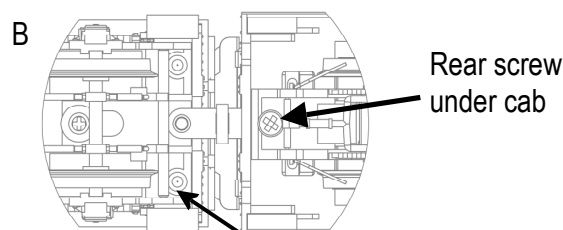
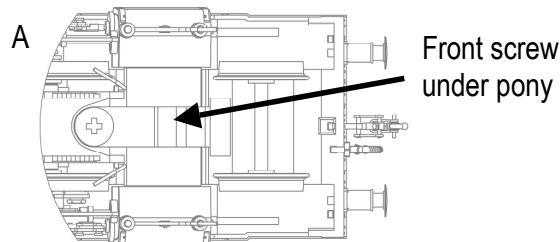
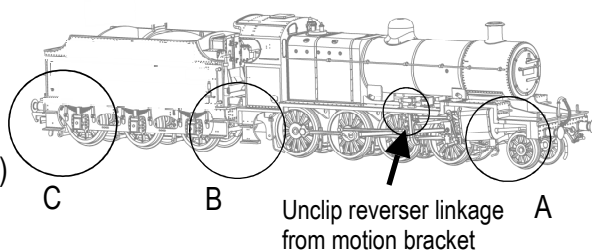
The model should be handled carefully as it has many finely detailed parts. It is not suitable for persons under 14 years.

Bachmann Europe Plc

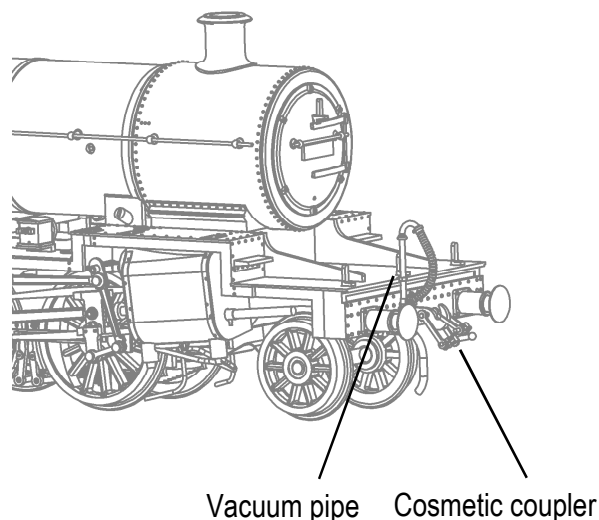
Moat Way, Barwell, Leicestershire, LE9 8EY
01455 841756

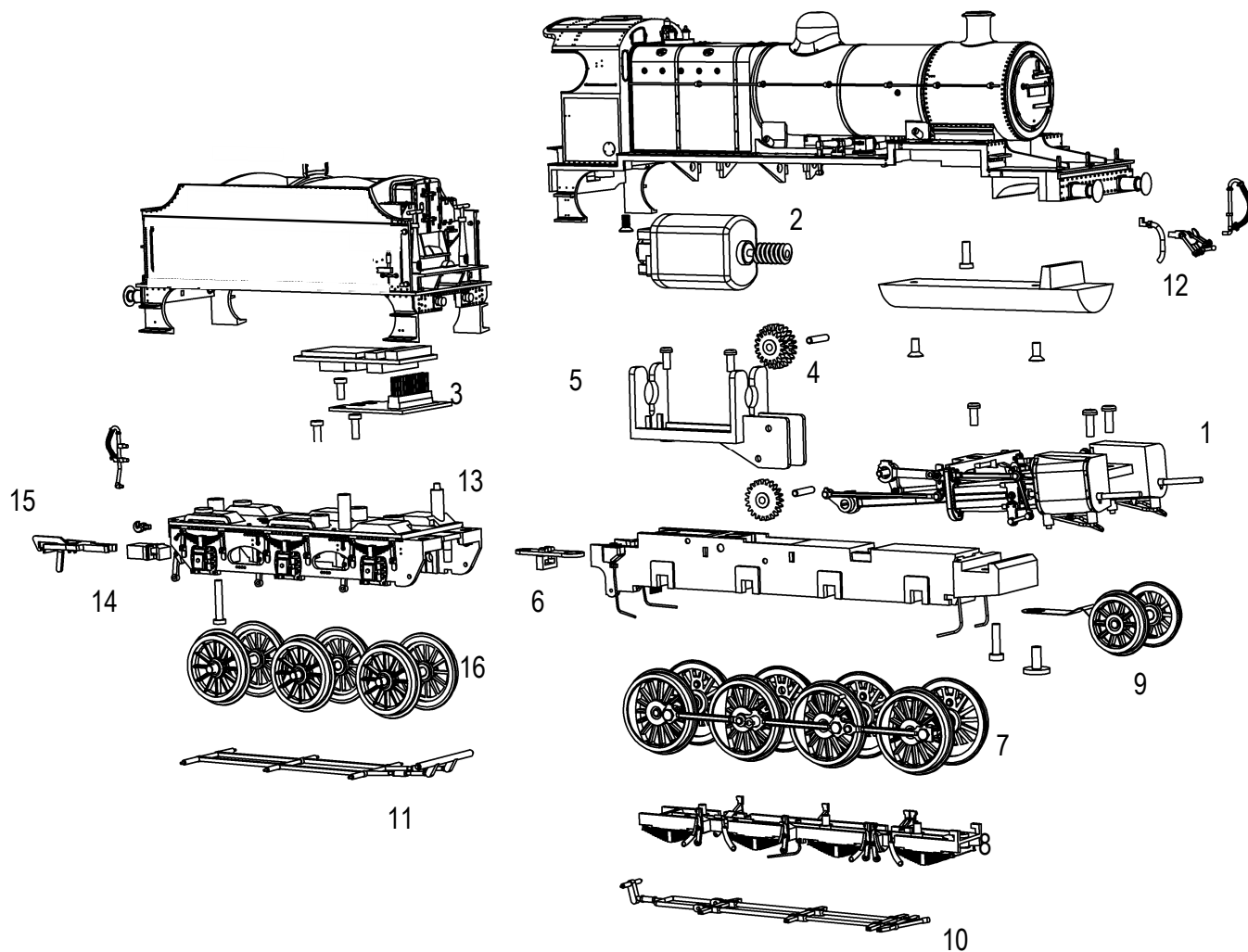
www.bachmann.co.uk

7F rev 1 08/10
E3101-IS001



Location of add-on details





Parts

- 1 011-103 cylinders /valve gear
- 2 011-106 motor
- 3 011-004 circuit board
- 4 011-112 gears
- 5 011-113 motor bracket
- 6 011-130 drawbar
- 7 011-117 driving wheels
- 8 011-118 baseplate
- 9 011-121 front pony

- 10 011-122 loco brake rigging
- 11 011-123 tender brake rigging
- 12 011-124 accessory pack
- 13 011-125 tender underframe
- 14 BL2006 NEM pocket
- 15 BL1999 coupling
- 16 011-126 tender wheels