

Thank you for your choice of the Bachmann Branchline A1 Class 4-6-2 locomotive.

## Running in

The mechanism of the model requires running in (without a load) for approximately 1 hour in each direction at moderate speed.

## Curves

Bachmann Branchline locomotives perform best on curves of second radius or greater (approx. 18 inches / 450 mm).

## Body removal

Remove the screws at front and back of the chassis as indicated on the diagram. **Please be careful of the pipe on the right hand side of the loco (chimney to right) when removing the body.** The pipe is fixed to the chassis, threaded through a holder on the underside of the running plate, passes through a hole in the running plate and into a small hole on the front of the Cab.

## DCC Decoder fitting to non DCC fitted loco

This model has a 21-pin NMRA/NEM 660 mtc socket for a decoder in the tender. We recommend that the running in as above be carried out using a DC power supply before moving on to fit a DCC decoder

**Please note: We recommend that you do not use an Analogue equipped model locomotive on a DCC System.**

## Lubrication

When required, sparingly lubricate the motor bearings using plastic compatible light oil and the gear train with model grease.

## Add-on detail parts.

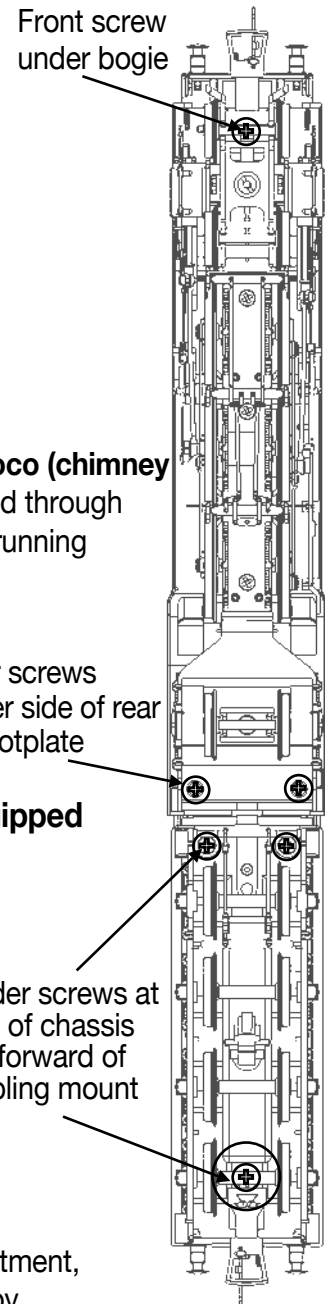
The cylinder draincocks, vacuum pipes, electric lamps, front footsteps and cab doors fit as shown. The parts may not be suitable for use on tight curves - check before fitting permanently.

## Replacement parts

Selected spare parts are available from the Bachmann Europe service department, for further information and enquiries please contact the service dept. direct by email [service@bachmann-europe.co.uk](mailto:service@bachmann-europe.co.uk) or by phone 01455 841756.

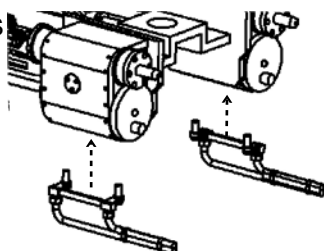
Packets of couplers (item 36-030) suitable for this model are available from retailers.

The model should be handled carefully as it has many finely detailed parts. It is not suitable for persons under 14 years.

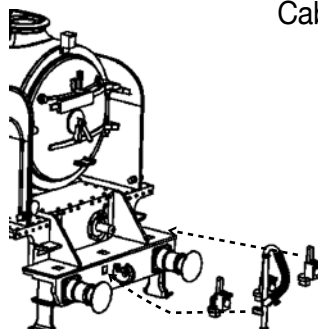


## Add-on parts

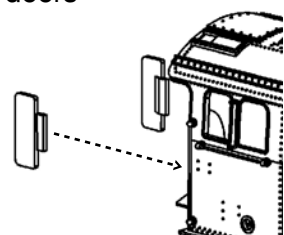
Cylinder Draincocks

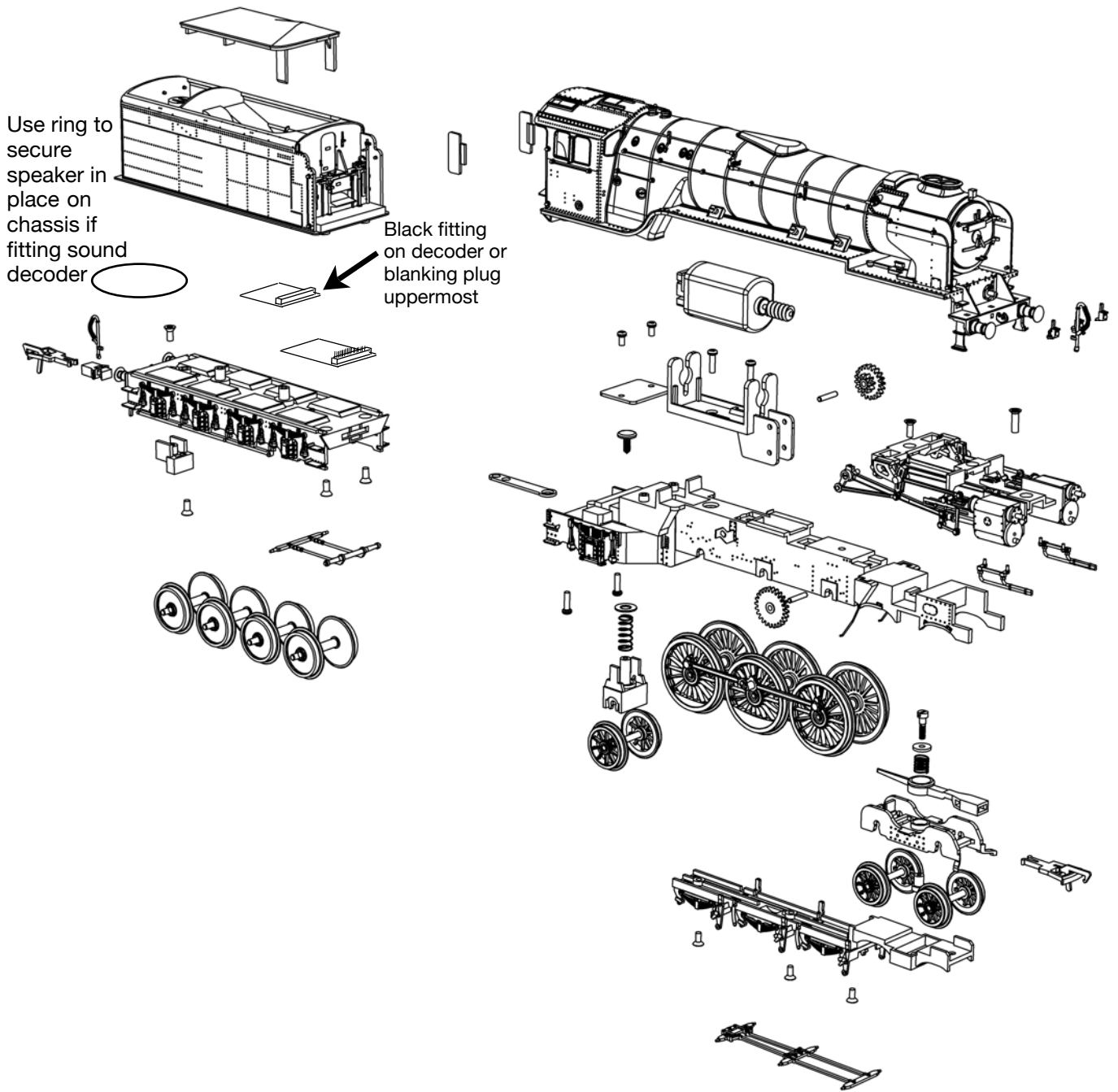


Front steps and vacuum pipe and lamps



Cab doors





Bachmann Europe Plc  
 Moat Way, Barwell, Leicestershire, LE9 8EY  
 01455 841756  
[www.bachmann.co.uk](http://www.bachmann.co.uk)  
 E3255-0916