

Thank you for your choice of the Bachmann Branchline Peppercorn 'A2' 4-6-2 locomotive.

## Running in

The mechanism of the model requires running in (without a load) for approximately 1 hour in each direction at moderate speed.

## Curves

Bachmann Branchline locomotives perform best on curves of second radius or greater (approx. 18 inches / 450 mm).

## Body removal

Remove the screws at front and back of the chassis as indicated on the diagram.

## DCC Decoder fitting to non DCC fitted loco

This model has a 21-pin NMRA/NEM 660 mtc socket for a decoder in the tender. We recommend that the running in as above be carried out using a DC power supply before moving on to fit a DCC decoder

## Lubrication

When required, sparingly lubricate the motor bearings using plastic compatible light oil and the gear train with model grease.

## Add-on detail parts.

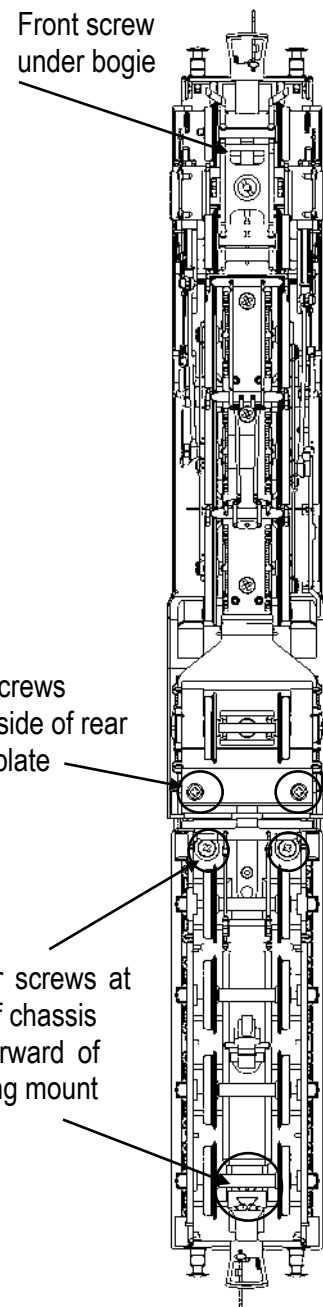
The cylinder draincocks, vacuum pipes, electric lamps, front footsteps and cab doors fit as shown. The parts may not be suitable for use on tight curves - check before fitting permanently.

## Replacement parts

When ordering parts please quote the catalogue number together with the livery of the model (if appropriate) and number of the part required. Parts are subject to availability.

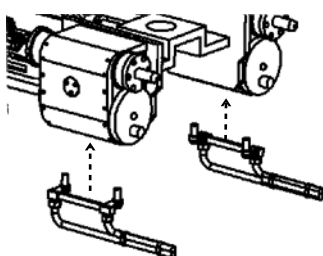
Packets of couplers (item 36-030) and buffers (item 36-035) suitable for this model are available from retailers.

**The model should be handled carefully as it has many finely detailed parts. It is not suitable for persons under 14 years.**

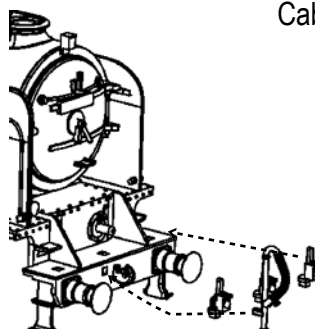


## Add-on parts

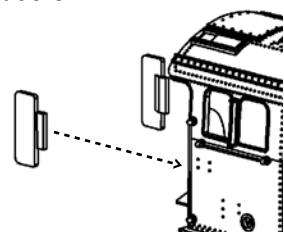
Cylinder  
Draincocks

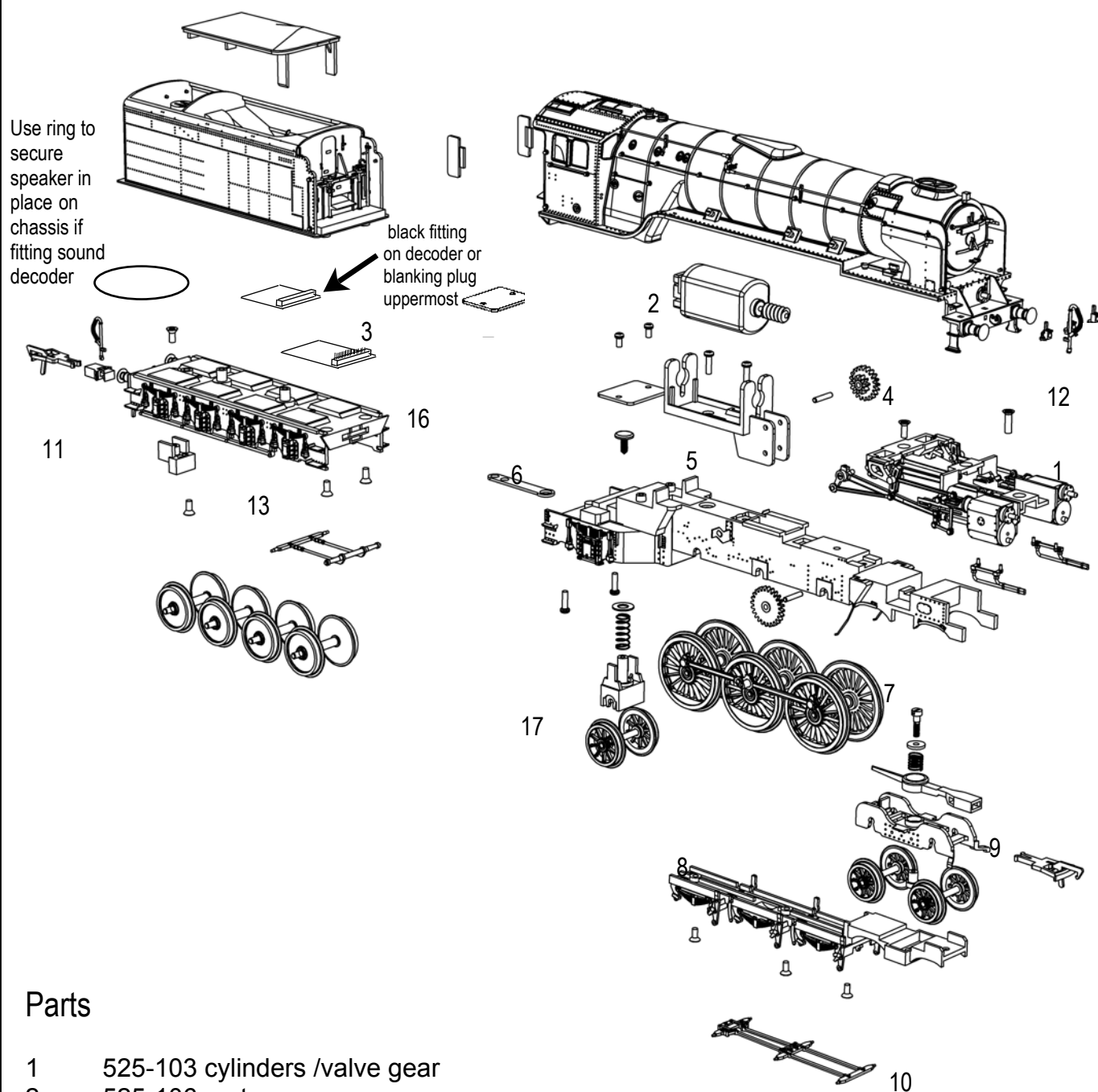


Front steps  
and vacuum  
pipe and  
lamps



Cab doors





## Parts

- 1 525-103 cylinders /valve gear
- 2 525-106 motor
- 3 350-004 circuit board
- 4 525-112 gears
- 5 525-113 motor bracket
- 6 250-130 drawbar
- 7 525-117 driving wheels
- 8 525-118 baseplate
- 9 525-121 front bogie
- 10 525-122 loco brake rigging
- 11 525-123 tender brake rigging
- 12 525-124 accessory pack
- 13 525-125 tender underframe
- 16 525-126 tender wheels
- 17 525-127 rear truck

## Bachmann Europe Plc

Moat Way, Barwell, Leicestershire, LE9 8EY  
01455 841756

[www.bachmann.co.uk](http://www.bachmann.co.uk)

A2 rev 2 05/15

E3152-IS002