



BR Standard 76000 4MT 2-6-0

Thank you for your choice of the Bachmann Branchline BR Standard 76000 2-6-0 mogul locomotive.

Running In

The mechanism of this model requires running in (without a load) for approximately 1 hour in each direction at moderate speed.

Curves

Bachmann Branchline locomotives are not suitable for use on track tighter than second radius (18inches).

Body removal

Remove the two screws indicated on the diagram.

DCC Decoder fitting to non DCC fitted loco

This model has an 8-pin NIMRA/NEM socket for a decoder with an appropriate plug. The plug should be aligned so that Pin 1 (Orange wire) is aligned to the mark on the PCB. Note that the locomotive will run in backwards if the decoder is reversed.

We recommend that the running in as above be carried out using a DC power supply before moving on to fit a DCC decoder.

Lubrication

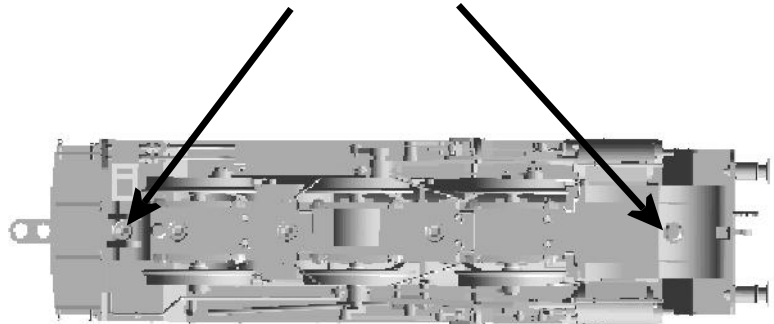
When required, sparingly lubricate the motor bearings using plastic compatible light oil and the gear train with model grease.

Buffer beam pipes and front footsteps.

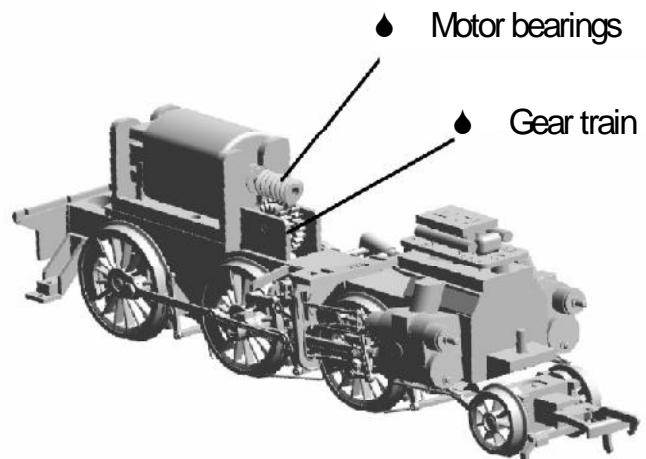
The locomotive vacuum pipes fit and front footsteps fit as shown. The front steps may not be suitable for tight curves - check before fitting permanently.

The model should be handled carefully as it has many finely detailed parts. It is not suitable for persons under 14 years.

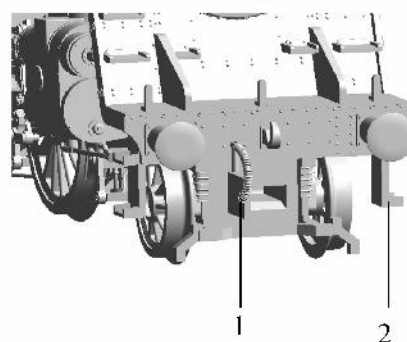
Location of body securing screws



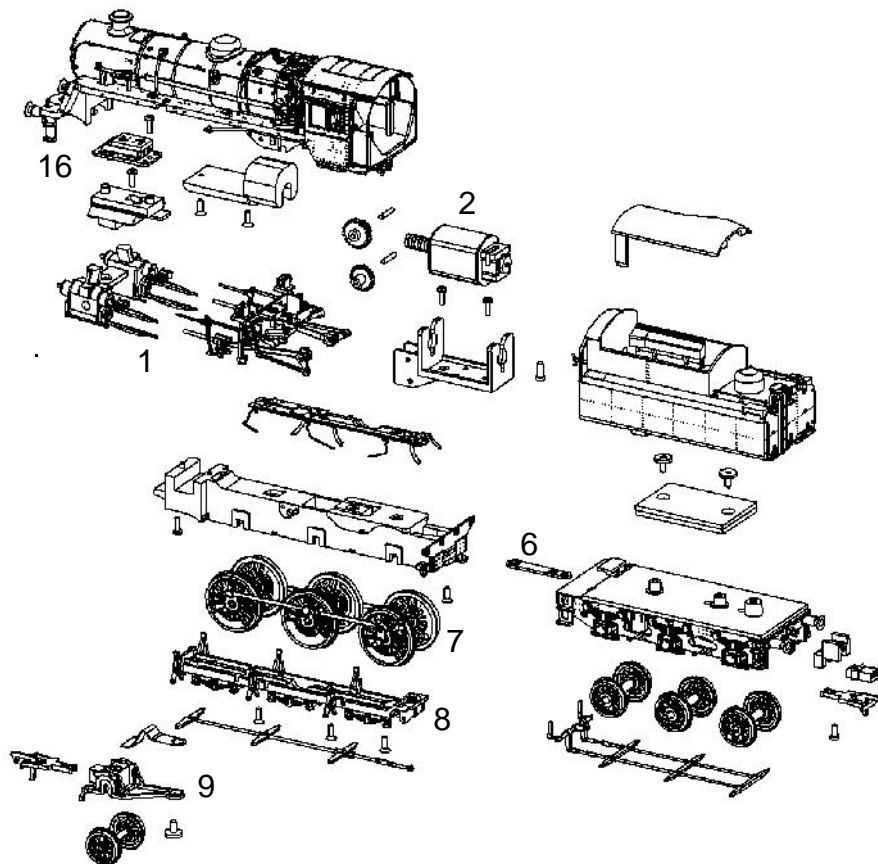
Lubrication



Location of vacuum pipes and steps



1. Vacuum pipe
2. Front footplate steps



Parts

- 1 975-003 cylinders / valve gear
- 2 975-006 motor
- 6 975-014 drawbar
- 7 975-017 driving wheels
- 8 975-018 baseplate
- 9 975-021 front pony truck
- 16 350-004 circuit board

Replacement parts

When ordering parts please quote the catalogue number together with the livery of the model (if appropriate) and number of the part required.

Parts are subject to availability.

Packets of couplers (item 36-030) and buffers (item 36-032) suitable for this model are available from retailers.

Bachmann Europe Plc

Mbat Way, Barwell, Leicestershire, LE9 8EY

01455 841756

www.bachmann.co.uk

BR 76000 rev 1 06/07

E3295-ISO001