

Thank you for your choice of the Graham Farish Stanier 'Black 5' 4-6-0 locomotive.

Running in

The mechanism of this model requires running in (without a load) for approximately 1 hour in each direction at moderate speed.

Curves

This locomotive performs best use on track with curves of second radius (**approx. 10.5 inches / 260 mm**) or greater but can be run on first radius curves

Body removal

The tender shell is secured by the two screws at rear underneath

Alternative bogie

This has scale sized wheels and is not suited for running on curves of less than 18 inch radius.

Alternative tender wheel

An tender wheel without traction tyres is included as an alternative to the rear set

DCC Decoder fitting to non DCC fitted loco

This model has an 6-pin NMRA/NEM 651 socket in the tender suitable for a decoder with an appropriate plug. Align the decoder as indicated.

Run in as above using a DC power supply before fitting a DCC decoder

Lubrication

When required, sparingly lubricate the motor bearings using plastic compatible light oil and the gear train with model grease. Suitable lubricants are Bachmann E-Z Lube item 99984 or Woodland Scenics 'HobbyLube' Lite Oil item HL654.

Add-on detail parts.

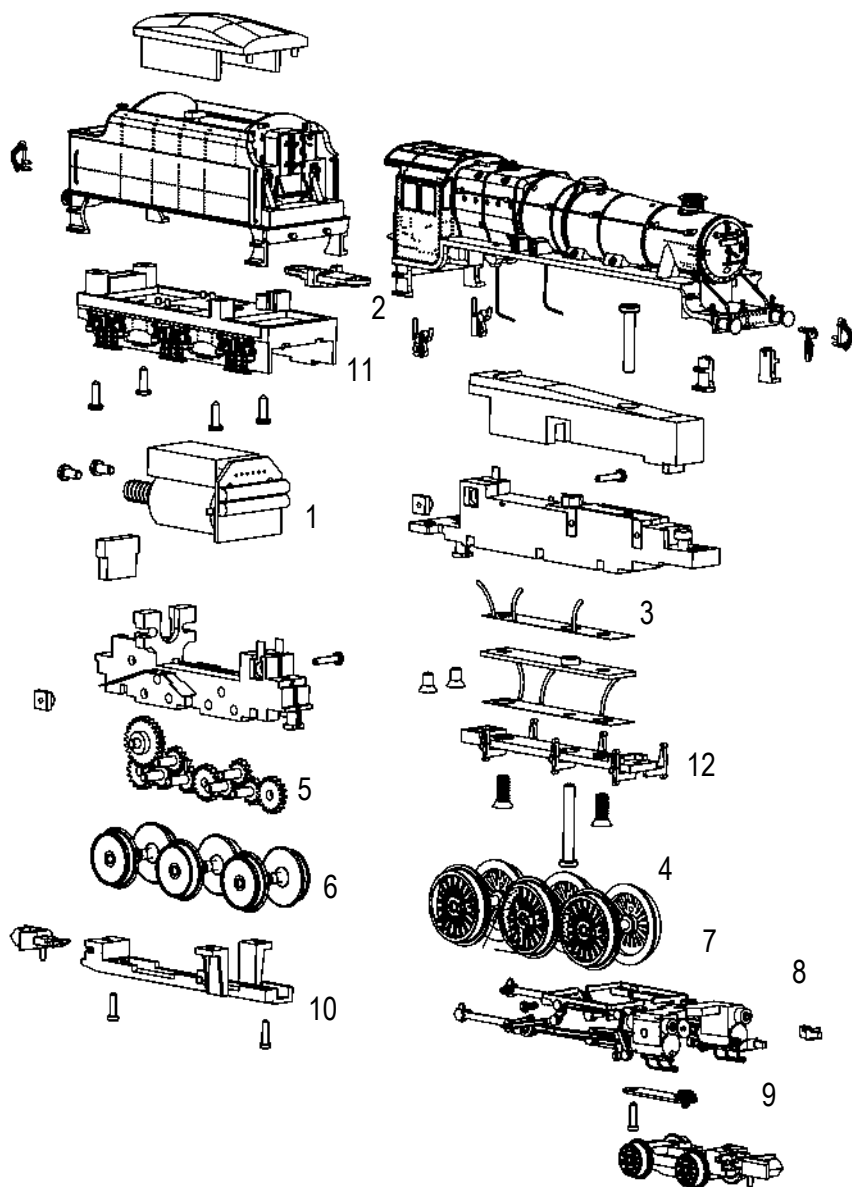
The vacuum pipes and cab windows fit as shown on the diagram.

Bachmann Europe Plc

Moat Way, Barwell, Leicestershire, LE9 8EY

01455 841756

www.bachmann.co.uk



Parts

1	Motor	8	Motion bracket
2	Drawbar	9	A - Front bogie with small wheels
3	Pickups		B - Front bogie with scale wheels
4	Driving wheels	10	Tender baseplate
5	Gears	11	Tender underframe
6	Tender wheels	12	Loco baseplate
7	Cylinders / motion		

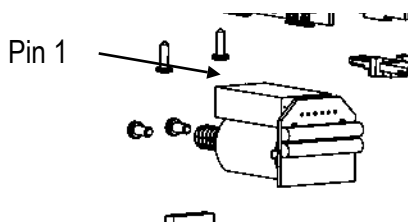
Replacement parts in retail packs

Couplings	- item 379-405
Traction tyres	- item 379-420

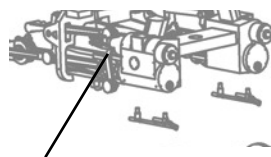
Fitting DCC decoder

The tender shell is secured by the two small screws at the underside at rear bufferbeam

Carefully remove the blanking board above the motor and replace with a decoder having a NMRA/NEM 651 6-pin fitting. Ensure the decoder is correctly aligned to the socket.



Fitting cylinder valve guides and drain-cocks



The valve guides fit into the holes in the back of the cylinder chest as indicated. There are two spare items included in the packet. Draincocks fit under the cylinders

Alternative front bogie

To fit:

- ease the front baseplate screw a couple of turns
- unhook the existing bogie
- hook the replacement bogie over the moulded peg
- tighten screw

Graham Farish N scale models should not be run on a DCC system unless a DCC decoder has been fitted as damage to the motor may result