

Thank you for your choice of the Bachmann Branchline 'City of Truro' 4-4-0 locomotive.

Running in

The mechanism of this model requires running in (without a load) for approximately 1 hour in each direction at moderate speed.

Curves

Bachmann Branchline locomotives are not suitable for use on track tighter than second radius (approx. 18 inches / 450 mm).

Body removal

Locomotive remove the two screws at front and rear of the baseplate as indicated on the diagram
The tiebars between the axleboxes must be removed

Tender remove the two screws at the rear of the tender
Also unclip the footplate from the front of the tender and ease the handrails from the hole at the front corners of the tender underframe

DCC Decoder fitting

This model has an 21-pin mtc connector in the tender for a decoder with an matching fitting (eg Bachmann 36-554). To use a decoder with an 8-pin harness use an 8 / 21-pin adaptor (item 36-559).

We recommend that the running in as above be carried out using a DC power supply before moving on to fit a DCC decoder. The decoder fits with the black fitting uppermost: remove the blanking plug before fitting the decoder

Sound decoder fitting

The model has space in the tender to accept a loudspeaker. Connect the speaker supplied with the decoder to the SP+ and SP- connections on the tender PCB. Follow any instructions supplied with the decoder.

Lubrication

When required, sparingly lubricate the motor bearings using plastic compatible light oil and the gear train with model grease.

Tender drawbar length adjustment

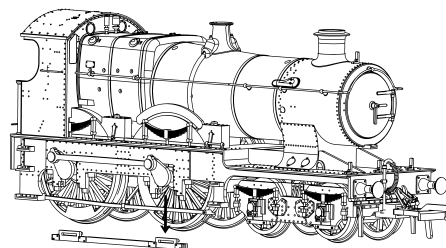
The model has a variable length drawbar set by the position of the sliding pin under the tender. Slacken the screw a quarter turn, adjust length and retighten.

Add-on detail parts.

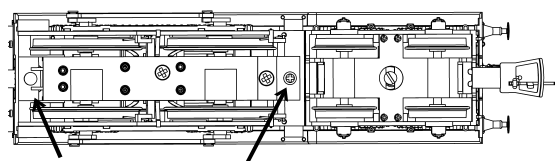
The vacuum pipes fit to the front and rear buffer beam and the guard irons to the front of the frames as shown.

A second bogie frame is enclosed should it be wished to remove the coupling pocket from the bogie that is fitted.

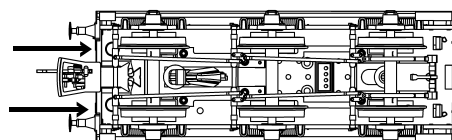
Removal of loco and tender body shells



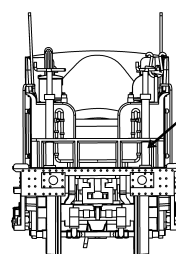
Remove axlebox tiebar



Remove screws either side of baseplate



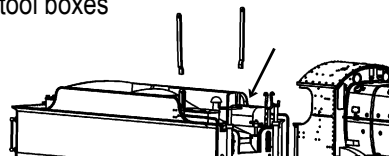
Remove tender body securing screws



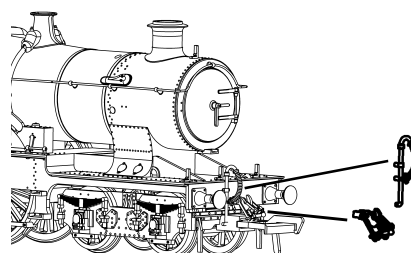
Unclip tender front footplate before removing tender body

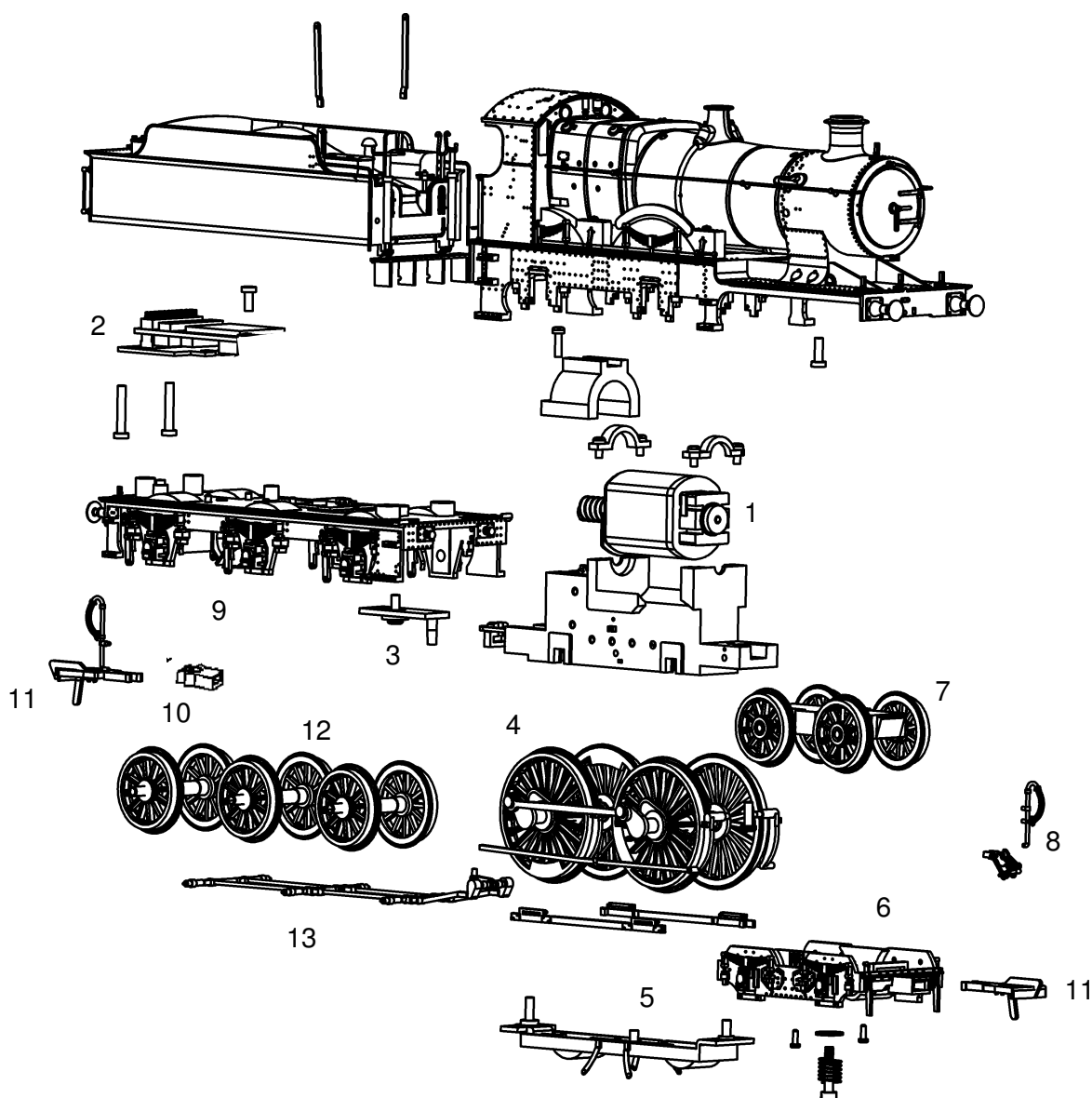
Location of add-on details

Cab weathersheet supports fit to holes behind the tool boxes



Vacuum pipe and cosmetic coupler





Replacement parts

When ordering parts please quote the catalogue number together with the livery of the model (if appropriate) and number of the part required.

Parts are subject to availability.

Packets of couplers / pockets (item 36-030) suitable for this model are available from retailers.

The model should be handled carefully as it has many finely detailed parts. It is not suitable for persons under 14 years.

Bachmann Europe Plc

Moat Way, Barwell, Leicestershire, LE9 8EY
01455 841756

www.bachmann.co.uk

City rev 1 08/09

E3172-IS001

Parts

1	725-106 motor
2	725-034 circuit board
3	725-105 drawbar
4	725-103 driving wheels
5	725-107 baseplate
6	725-108 front bogie frame
7	725-109 bogie wheels
8	725-123 accessory pack
9	725-124 tender underframe
10	BL2006 NEM pocket
11	BL1999 coupling
12	725-125 tender wheels
13	725-126 tender brake rigging