

Thank you for your choice of the Bachmann Branchline BR Class 03 0-6-0 diesel locomotive.

Running in

The mechanism of this model requires running in (without a load) for approximately 1 hour in each direction at moderate speed.

Curves

Bachmann Branchline locomotives perform best on curves of second radius (approx. 18 inches / 450 mm) or greater

Body removal

Remove the two screws at front and back of the chassis under the coupling pockets, as indicated on the diagram.

DCC Decoder fitting to non DCC fitted loco

This model has an 6-pin NMRA/NEM 651 socket for a decoder with an appropriate fitting. Remove the fitted blanking plug and fit the decoder, aligning so that Pin 1 is to the marked '1' on the PCB. Also follow any instructions included with the decoder.

We recommend that the running in as above be carried out using a DC power supply before moving on to fit a DCC decoder

With a decoder fitted, the cablights are controlled by F0 on the DCC controller.

Lubrication

When required, sparingly lubricate the motor bearings using plastic compatible light oil and the gear train with model grease.

Add-on detail parts.

Vacuum/air brake pipes and a part to complete the bufferbeam if the functional coupler is not required are included

Replacement parts

When ordering parts please quote the catalogue number together with the livery of the model (if appropriate) and number of the part required. Parts are subject to availability.

Packets of couplers (item 36-030) and buffers (item 36-031) suitable for this model are available from retailers.

The model should be handled carefully as it has many finely detailed parts. It is not suitable for persons under 14 years.

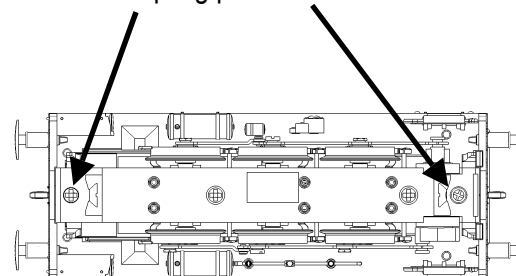
Bachmann Europe Plc

Moat Way, Barwell, Leicestershire, LE9 8EY
01455 841756

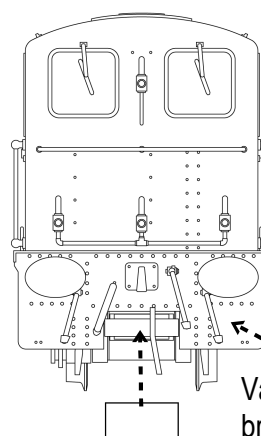
www.bachmann.co.uk

CI 03 rev 1 03/10

Front and rear fixing screws located under coupling pockets



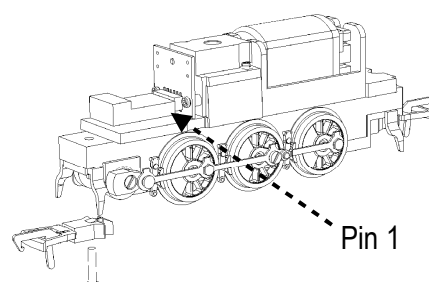
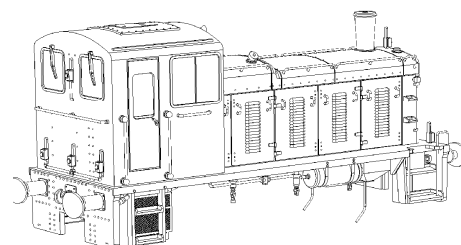
Add-on parts

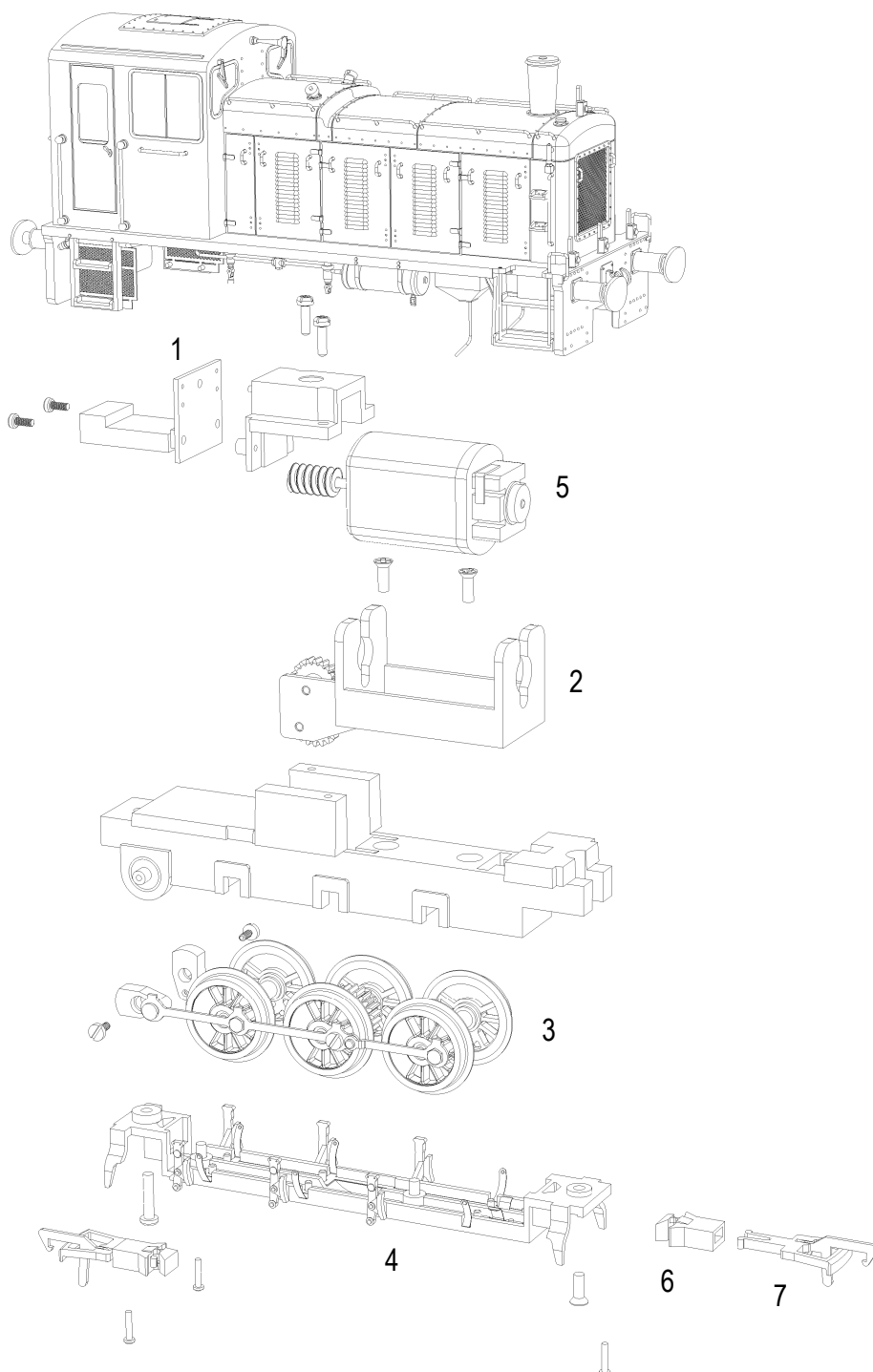


Vacuum and air brake pipes according to model

Push in part to complete buffer beam if functional couplers not required

Fitting a decoder





Parts

- 1 360-101 circuit board
- 2 360-102 motor bracket
- 3 360-103 driving wheels
- 4 360-104 baseplate
- 5 360-106 motor
- 6 BL2006 NEM pocket
- 7 BL1999 coupling