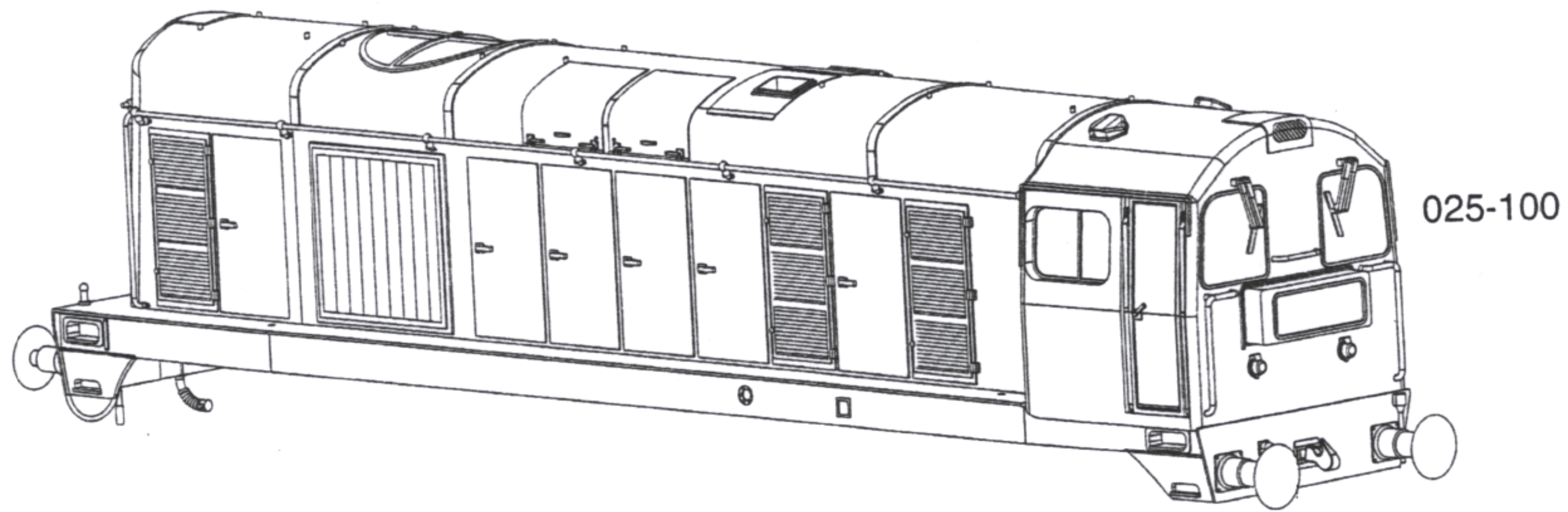


# CLASS 20 DIESEL LOCOMOTIVE

32-025



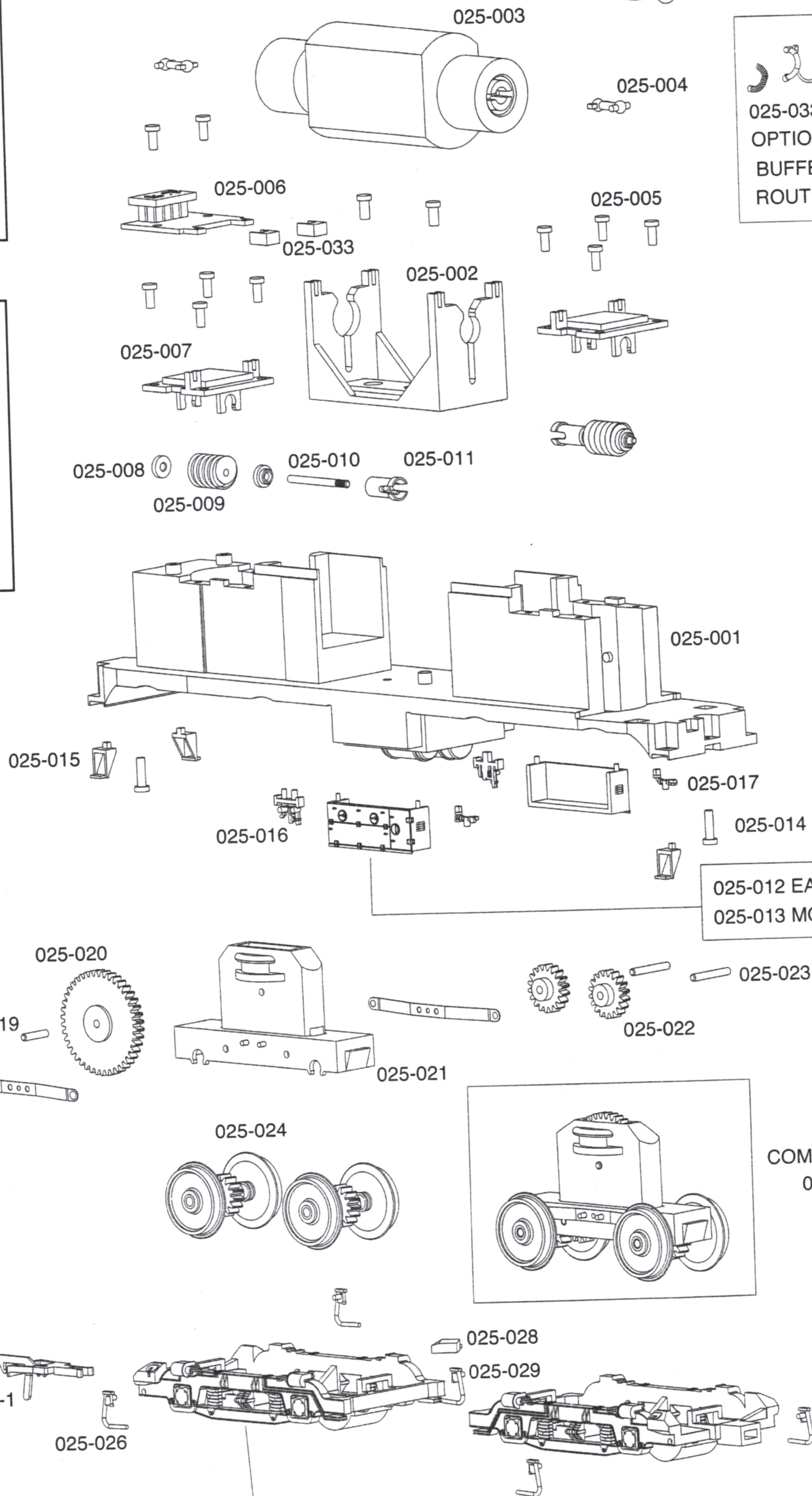
## IMPORTANT!

WHEN ORDERING ANY REPLACEMENT PARTS PLEASE ENSURE TO QUOTE THE APPROPRIATE CATALOGUE NUMBER/LIVERY OF YOUR BACHMANN LOCOMOTIVE, IN ADDITION TO THE NUMBER OF THE PART REQUIRED.

PLEASE NOTE WE WOULD LIKE TO BRING YOUR ATTENTION TO RUNNING-IN WHICH IS NECESSARY WITH THIS TYPE OF DRIVE. RUN FOR APPROXIMATELY ONE HOUR TO ALLOW WORKING PARTS TO BED-IN. LIGHTLY OIL THE MOTOR BEARINGS AND GEARS WHEN REQUIRED.



025-033  
OPTIONAL ACCESSORIES PARTS  
BUFFER BEAM PARTS +  
ROUTE INDICATOR DISC'S



025-012 EARLY BATTERY BOX (TYPE A)  
025-013 MODIFIED BATTERY BOX (TYPE B)

COMPLETE UNIT  
025-025

025-030 RIBBED & STRESS HOLES BOGIE FRAMES (BOGIE A)  
025-031 RIBBED BOGIE FRAMES (BOGIE B)  
025-032 SMOOTH BOGIE FRAMES (BOGIE C)

E3202 -IS001