



## Siemens Class 350 Desiro

Thank you for your choice of the Graham Farish Siemens Class 350 'Desiro' electric multiple unit.

### Running in

The mechanism of this model requires running in (without a load) for approximately 1 hour in each direction at moderate speed.

### Curves

This model performs best on 12" radius curves or greater but will operate on 9" radius curves.

### Body removal

The bodysell clips over the chassis and can be removed by carefully easing away from the chassis. Start by easing apart beneath cab doors and working towards the rear of the car

### Lubrication

When required, sparingly lubricate the motor bearings using plastic compatible light oil and the gear train with model grease. Suitable lubricants are Bachmann E-Z Lube item 99984 or Woodland Scenics 'HobbyLube' Lite Oil item HL654.

### DCC Decoder fitting

The model has a NMRA/NEM 651 6-pin decoder socket in both power and driving end cars.

Follow the instructions supplied with the decoder. Remove the blanking board and fit the decoder, aligning as shown. We recommend that the model is run in first using a DC supply before fitting a decoder.

### Sound decoder / loudspeaker fitting

Space is provided at the gangway end of the power car for loudspeaker to be used in conjunction with a suitably sized sound decoder.

### Additional parts

Alternative shorter couplers are provided for use on larger radius curves only

### Unit configuration

The cars are labelled A, B, C, D underneath and should be arranged in order

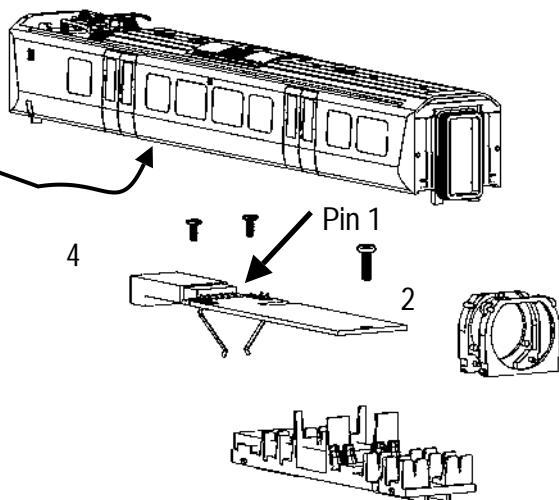
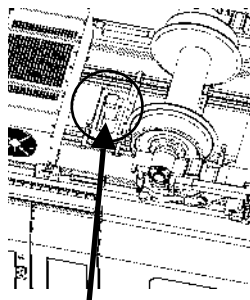
Graham Farish N scale models should not be run on a DCC supply unless a DCC decoder has been fitted as damage to the motor may result

### Bachmann Europe Plc

Moat Way, Barwell, Leicestershire, LE9  
8EY 01455 841756  
[www.bachmann.co.uk](http://www.bachmann.co.uk)

CI 350 rev 1 10/11  
F7170-IS001

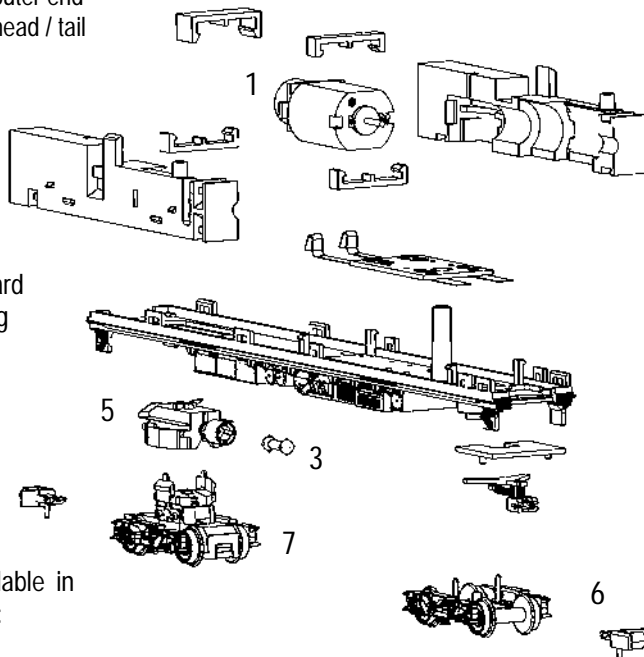
Unclip body by easing  
bodyside away from  
solebar starting in the  
middle of the car here



Switch by driving car outer end  
bogie turns this car's head / tail  
lights off

## Parts

- 1 Motor
- 2 PCB
- 3 Driveshaft
- 4 6-pin blanking board
- 5 Worm and housing
- 6 Coupling
- 7 Bogie



Couplings are available in  
packs from retailers:

- 379-401 standard length
- 379-402 short