

Fowler Class 3F 'Jinty' 0-6-0 tank locomotive

Thank you for your choice of the Graham Farish Fowler Class 3 'Jinty' 0-6-0 tank locomotive.

Running in

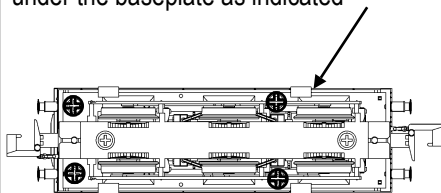
The mechanism of this model requires running in (without a load) for approximately 1 hour in each direction at moderate speed.

Curves

This locomotive performs best on track with curves of second radius (**approx. 10.5 inches / 260 mm**) or greater.

Body removal

The bodyshell is secured by 4 screws under the baseplate as indicated



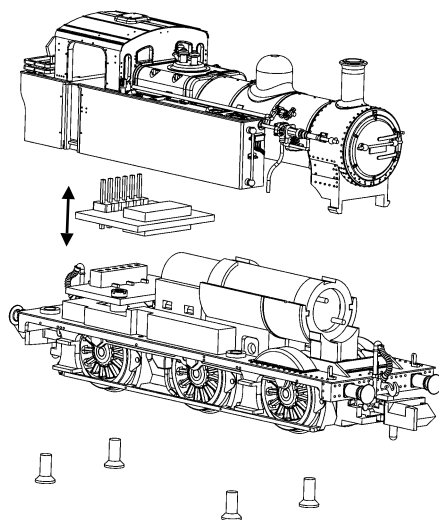
Lubrication

When required, sparingly lubricate the motor bearings using plastic compatible light oil. Suitable lubricants are Bachmann E-Z Lube item 99984 or Woodland Scenics 'HobbyLube' Lite Oil item HL654.

DCC Decoder fitting to non DCC fitted loco

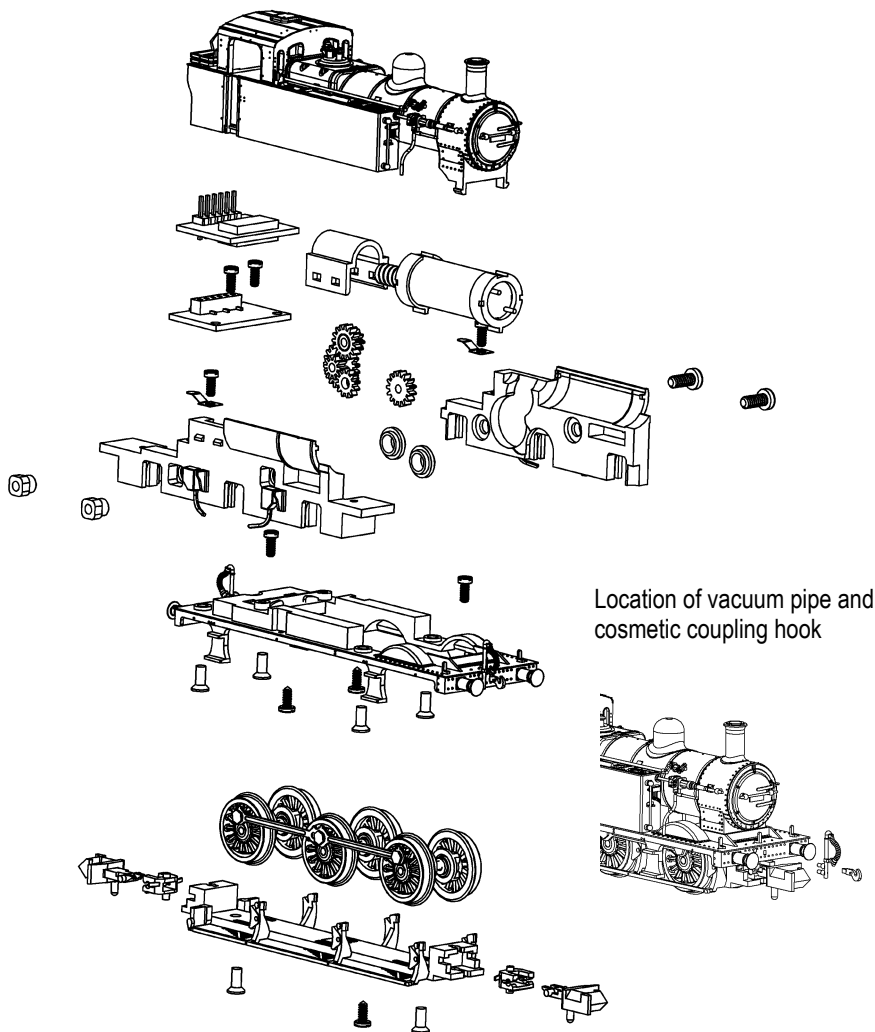
This model has an 6-pin 'Right Angle' socket in the cab area suitable for a decoder with an appropriate fitting eg Bachmann 36-556RA decoder.

Run in as above using a DC power supply before fitting a DCC decoder; remove DC blanking plug from socket to fit decoder



Do not run Graham Farish N scale models with a DCC controller unless a DCC decoder has been fitted as damage to the motor may result if run as analogue loco "0"

Fowler Class 3F 'Jinty' 0-6-0 tank locomotive



Location of vacuum pipe and
cosmetic coupling hook

Parts subject to availability - please contact
the Service Department
Replacement parts available in retail packs
Couplings - item 379-401

Jinty rev 2 02/14 F7221-IS002
© Bachmann Europe plc 2013

Bachmann Europe Plc
Moat Way, Barwell, Leicestershire,
LE9 8EY

Tel: 01455 841756
www.bachmann.co.uk