

Thank you for your choice of the Bachmann Branchline Class 42 'Warship' diesel locomotive.

## General

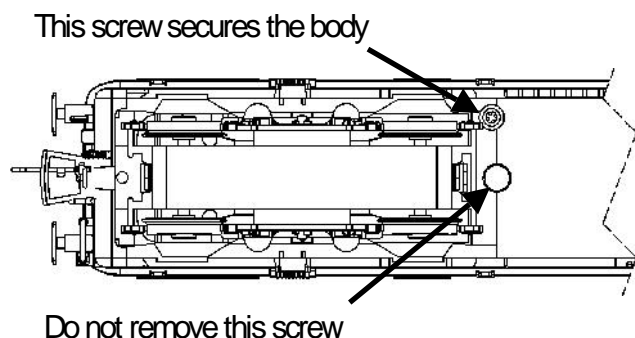
The mechanism of this model requires running in (without a load) for approximately half an hour in each direction at moderate speed to allow the gear train to bed in.

When required, sparingly lubricate the motor bearings using plastic compatible light oil and the gear train with model grease.

Bachmann Branchline locomotives are not suitable for use on track tighter than second radius (18 inches / 450 mm).

## Body removal

There are two screws, on the diagonal beside each bogie, as indicated on the diagram. Do not remove the two screws on the centre line of the loco by each bogie.



## DCC Decoder fitting to DC model

This model has a 21-pin connector for a decoder.

Use either a decoder with matching fitting (for example Bachmann 36-554) or the Bachmann 36-559 8/21-pin adaptor to use a decoder with an 8-pin plug.

It is recommended to run a DC loco in first on a DC power supply before installing a decoder.

Carefully remove the blanking board and locate the decoder onto the pins on the PCB following the instructions included with the decoder: the decoder fits so that the contact block is uppermost with the decoder fitting towards the middle of the main loco PCB.

## DCC Sound decoder fitting to DC model

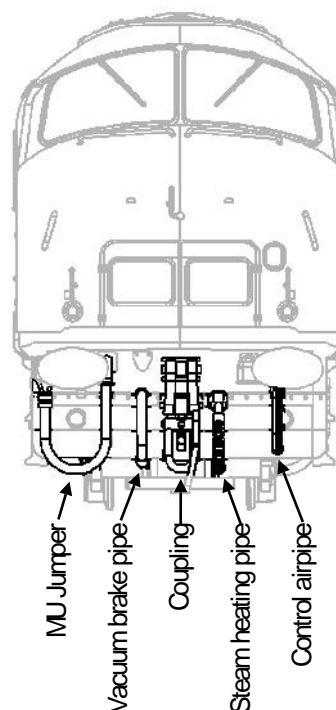
There are loudspeaker connections on the main PCB, marked 'SP+' and 'SP-' that can be used when a sound decoder with a 21-pin connector is used. Follow any fitting instructions supplied with the decoder.

## Control of lights with DCC

When using a decoder with the appropriate number of function outputs, the onboard lights can be controlled as follows:

F0 - Head lights / tail lights turned on / off

F1 - Cablights on / off



## Buffer beam parts

The fairing and buffer beam detail can be fitted only if the coupling is removed from the bogie. The bogie frame must be unclipped from the bogie first to do this.

## Hints for best results

The operation of a DCC loco requires that the power to the model is not interrupted. Track, wheels and pickups should be kept clean and all rail joiners must give good connections between sections of track. Improved reliability of DCC performance may be obtained by deselecting DC operation of the model on the decoder. This is usually controlled by CV29, Bit 2

## Replacement Parts

1	motor	050-005
2	PCB 21pin	050-032
3	driveshaft	050-017
4	underframe	050-033
5	driving wheels	050-022
6	bogie	050-028
7	bogie frame	050-030
8	motor bracket	500-110
9	buffer beam pack	050-031
10	bogie clip	050-002

When ordering parts please quote the catalogue number together with the livery of the model (if appropriate) and number of the part required.

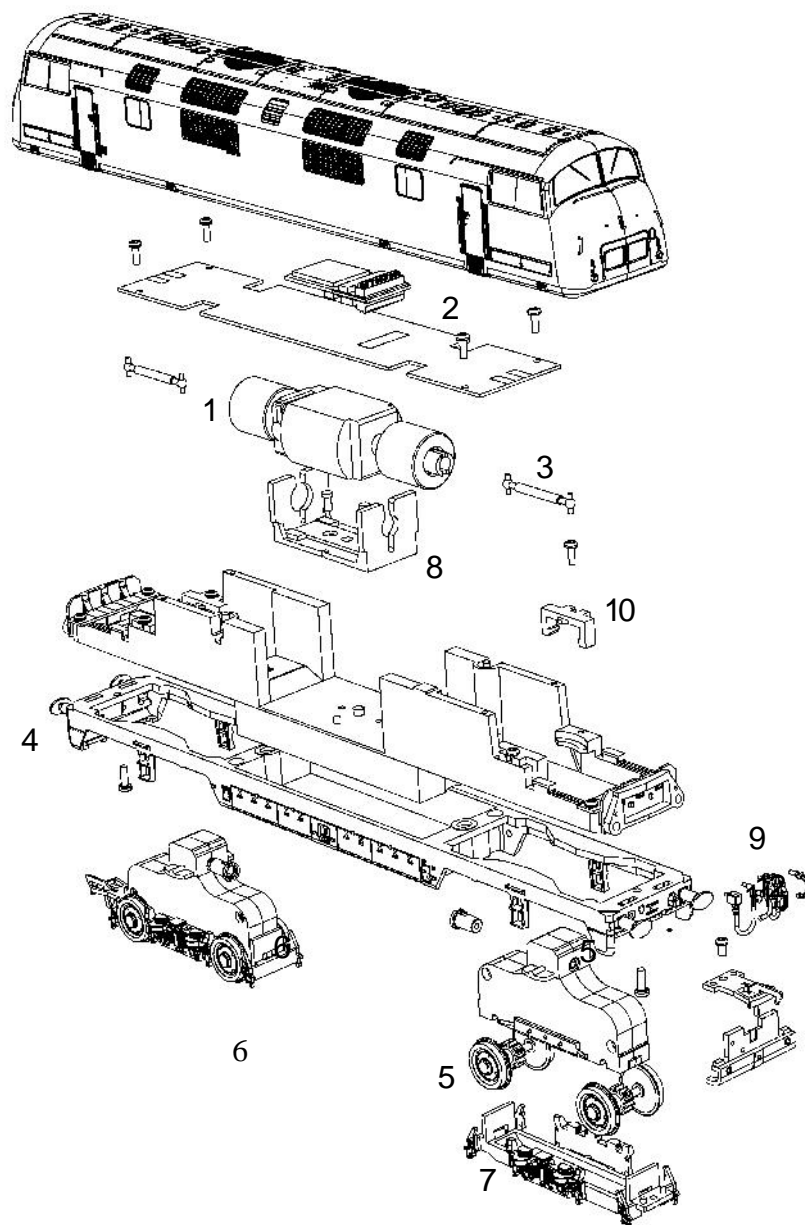
Parts are subject to availability.

Packets of buffers suitable for this model are available from retailers: item ref 36-031

## Bachmann Europe Plc

Moat Way  
Barwell  
Leicestershire  
LE9 8EY  
01455 841756  
[www.bachmann.co.uk](http://www.bachmann.co.uk)

The model should be handled carefully as it has many finely detailed parts. It is not suitable for persons under 14 years.



## Location and alignment of 21-pin DCC decoder

