

Thank you for your choice of the Graham Farish English Electric Class 55 diesel locomotive.

## Running in

The mechanism of this model requires running in (without a load) for approximately 1 hour in each direction at moderate speed.

## Curves

This locomotive performs best on 12" radius curves but it will operate on 9" radius curves.

## Body removal

The bodysell clips over the chassis and can be removed by carefully easing away from the chassis at the middle of the body..

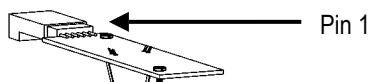
## Lubrication

When required, sparingly lubricate the motor bearings using plastic compatible light oil and the gear train with model grease. Suitable lubricants are Bachmann E-Z Lube item 99984 or Woodland Scenics 'HobbyLube' Lite Oil item HL654.

## DCC Decoder fitting

The model has a NMRA/NEM 651 6-pin decoder socket.

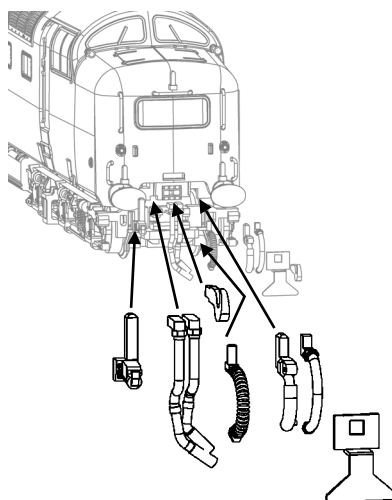
Follow the instructions supplied with the decoder. Remove the blanking board and fit the decoder, aligning as shown



We recommend that the model is run in first using a DC supply before fitting a decoder.

## Buffer beam parts

Pipes, cosmetic coupling hook and protector plate can be fitted as an alternative to the functional coupler. A spare bogie frame is enclosed should it be wished to remove the coupling pocket to fit the protector plate. The pipes and coupling fit as shown. Check that the model runs on your curves before final fitting.



## Bachmann Europe Plc

Moat Way, Barwell, Leicestershire

LE9 8EY 01455 841756

[www.bachmann.co.uk](http://www.bachmann.co.uk)

Cl 55 rev 1 12/12

F7128-IS001

## Parts

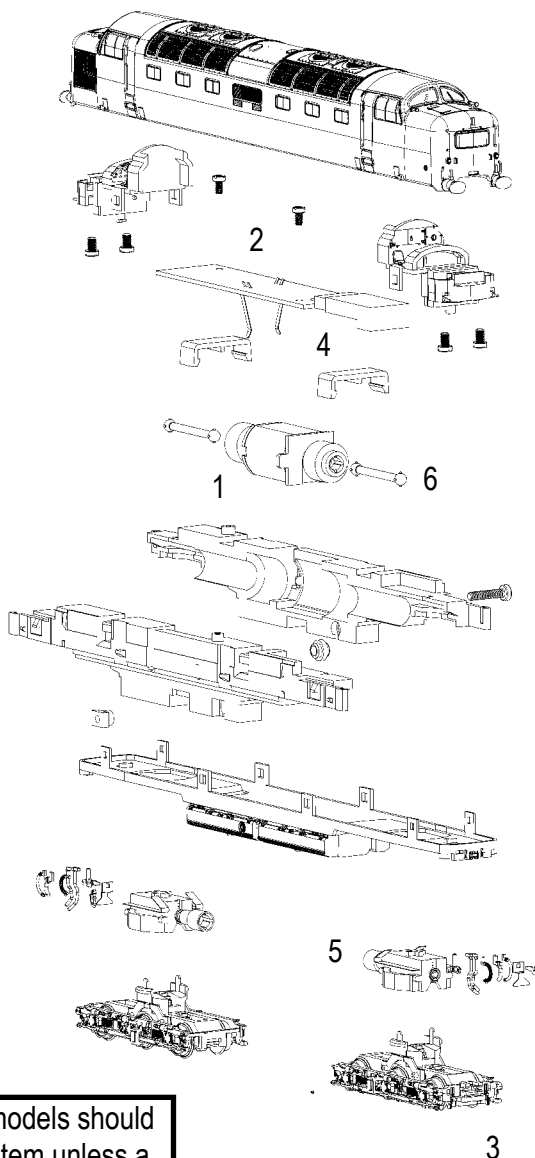
- 1 Motor
- 2 PCB
- 3 Bogie
- 4 DC blanking board
- 5 Worm and housing
- 6 Driveshaft

Couplings for the model are available in packets from retailers as item 379-402

**The model should be handled carefully as it has many finely detailed parts. It is not suitable for persons under 14 years**

When ordering parts please quote the catalogue number together with the livery of the model (if appropriate) and number of the part required.

Parts may be subject to availability.



Graham Farish N scale models should not be run on a DCC system unless a DCC decoder has been fitted as damage to the motor may result