

Thank you for your choice of the Graham Farish Class 57 diesel locomotive.

Running in

The mechanism of this model requires running in (without a load) for approximately 1 hour in each direction at moderate speed.

Curves

This locomotive performs best on second radius curves or greater (approx 10.5 inches) but will operate on first radius curves.

Body removal

The bodyshell clips over the chassis and can be removed by carefully easing away from the chassis.

Lubrication

When required, sparingly lubricate the motor bearings using plastic compatible light oil and the gear train with model grease. Suitable lubricants are Bachmann E-Z Lube® Light Gear Oil, item 99984, or Woodland Scenics Hob-E-Lube® Lite Oil, item HL654.

The bogies can be unclipped from the chassis for servicing: ensure that the gear is correctly located in the worm after reinstallation. Do not run the locomotive upside down.

DCC Decoder Fitting

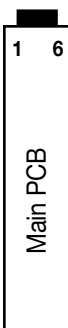
It is recommended that the model is run in first using a DC supply before fitting a decoder.

The model is fitted with a NEM 651 6 pin socket for a decoder with matching fitting (e.g. Bachmann 36-558A)



Decoder

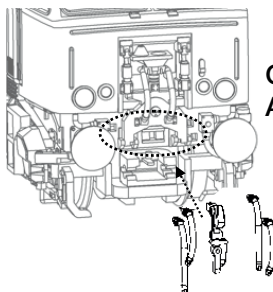
Align pin 1 of the decoder to pin 1 marked on the PCB



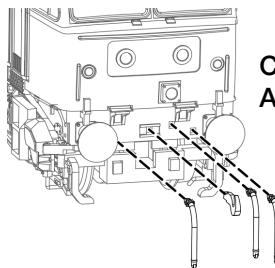
Main PCB

Buffer Beam Accessories

Pipes and a cosmetic screw coupler can be fitted to the buffer beam as an alternative to the functional coupler. The parts fit as per the diagrams below.



Class 57/3 Accessories



Class 57/3 Accessories

Graham Farish N scale models should not be run on a DCC system unless a DCC decoder has been fitted as this may result in damage to the motor.

Parts

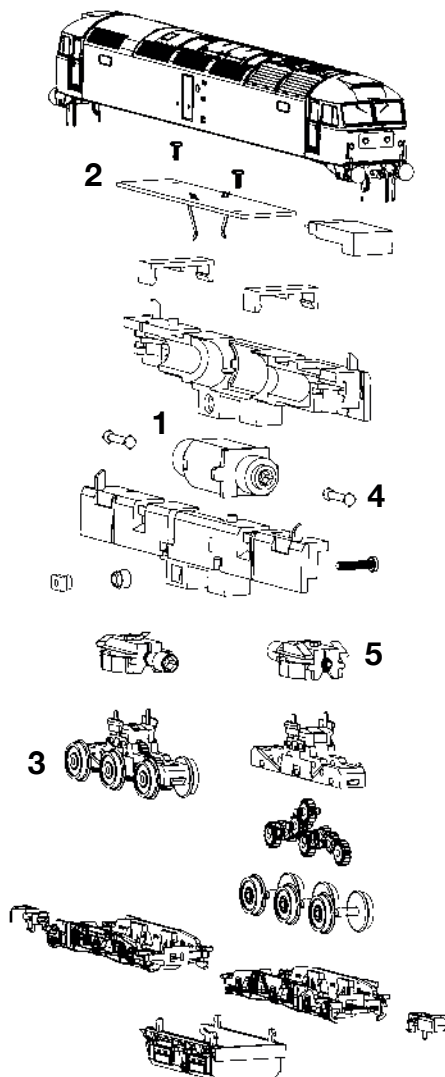
- 1 Motor
- 2 PCB
- 3 Bogie
- 4 Driveshaft
- 5 Worm and housing

Couplings are available in packets from retailers: item number 379-401

When ordering parts please quote the catalogue number together with the livery of the model (if appropriate) and number of the part required.

Parts are subject to availability.

The model should be handled carefully as it has many finely detailed parts. It is not suitable for persons under 14 years



Bachmann Europe Plc.

Moat Way, Barwell, Leicestershire, LE9 8EY 01455 841756
www.bachmann.co.uk