

Thank you for your choice of the Graham Farish GWR 6400 Class 0-6-0 Pannier tank locomotive.

Running in

The mechanism of this model requires running in (without a load) for approximately 1 hour in each direction at moderate speed.

Curves

This locomotive will run on first radius track but performs best on track with curves of second radius (**approx. 10.5 inches / 260 mm**) or greater.

Body removal

The bodyshell is secured by the screw at front of the baseplate as indicated

Lubrication

When required, sparingly lubricate the motor bearings using plastic compatible light oil. Suitable lubricants are Bachmann E-Z Lube item 99984 or Woodland Scenics 'HobbyLube' Lite Oil item HL654.

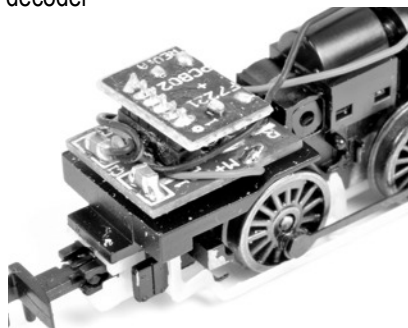
DCC Decoder fitting to non DCC fitted loco

This model has an 6-pin 'Right Angle' socket in the cab area suitable for a decoder with an appropriate fitting eg Bachmann 36-556RA decoder.

Run in as above using a DC power supply before fitting a DCC decoder; remove DC blanking plug from socket to fit decoder

Do not run Graham Farish N scale models with a DCC controller unless a DCC decoder has been fitted as damage to the motor may result if run as analogue loco "0" (address 10 on E-Z Command)

Location / alignment of blanking plug or decoder



Bachmann Europe Plc

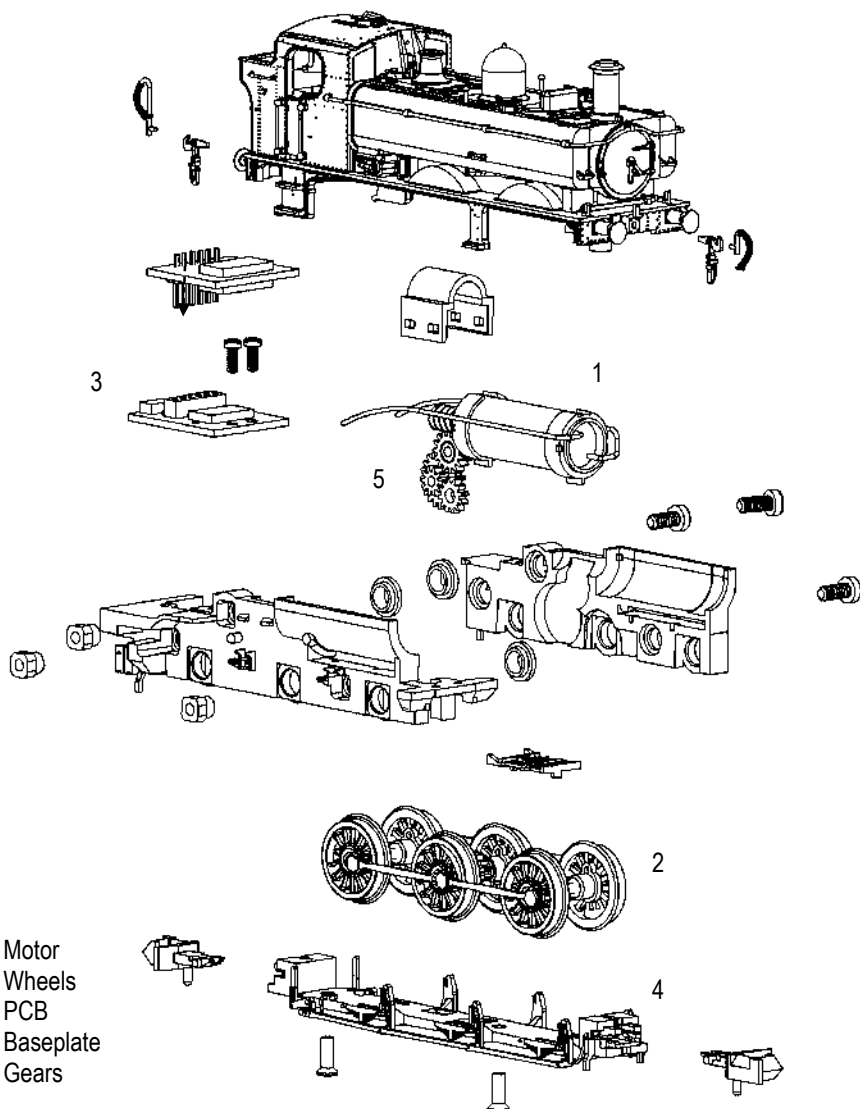
Moat Way, Barwell, Leicestershire,
LE9 8EY

Tel: 01455 841756

www.bachmann.co.uk

6400 rev 1 12/15 F7198-IS001

© Bachmann Europe plc 2015



- 1 Motor
- 2 Wheels
- 3 PCB
- 4 Baseplate
- 5 Gears

Parts subject to availability - please
contact the Service Department
Replacement parts available in retail
packs

