



Freightliner Class 70 'PowerHaul' Diesel Locomotive

Thank you for your choice of the Bachmann Branchline Freightliner Class 70 'PowerHaul' diesel locomotive.

General

The mechanism of this model requires running in (without a load) for approximately half an hour in each direction at moderate speed to allow the gear train to bed in.

When required, sparingly lubricate the motor bearings using plastic compatible light oil and the gear train with model grease.

Bachmann Branchline locomotives perform best on curves of second radius or greater (approx. 18 inches / 450 mm).

Body removal

There are four screws, two beside each bogie, as indicated on the diagram (right).

DCC Decoder fitting to DC model

This model has a 21-pin connector for a decoder.

Use either a decoder with matching fitting (for example Bachmann 36-554) or the Bachmann 36-559 8/21-pin adaptor to use a decoder with an 8-pin plug.

It is recommended to run a DC loco in first on a DC power supply before installing a decoder.

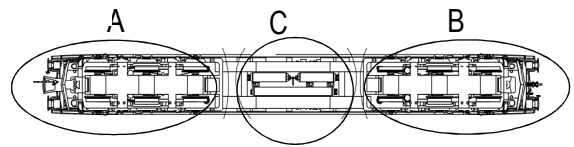
Carefully remove the blanking board and locate the decoder onto the pins on the PCB following the instructions included with the decoder: the decoder fits so that the contact block is uppermost with the decoder fitting towards the middle of the main loco PCB.

Control of lights with DCC

When using a decoder with the appropriate number of function outputs, the onboard lights can be controlled as follows:

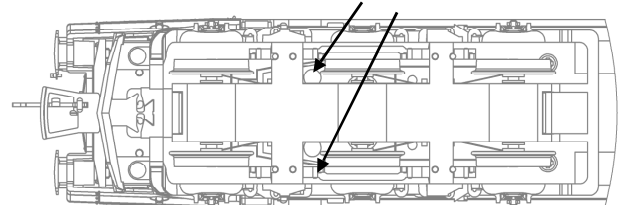
F0 - Head lights / tail lights turned on / off

F1 - Cablights on / off



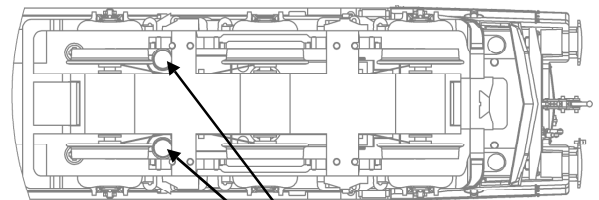
A - Fan end

Screw just forward of second driving wheel (deep)



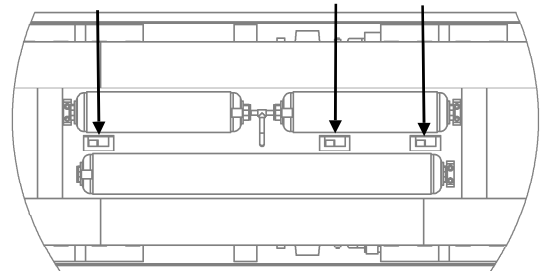
B

Screw just forward of third driving wheel



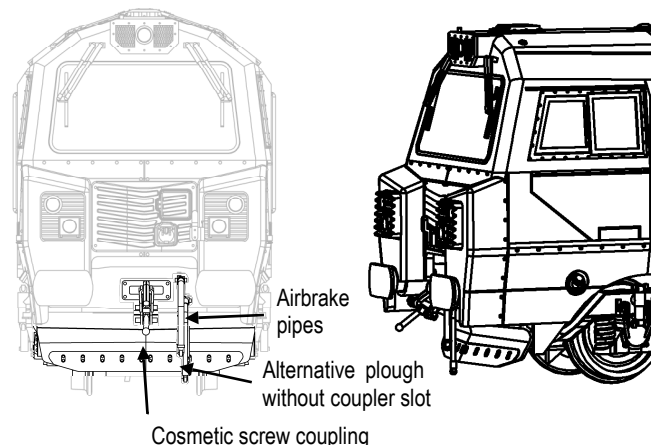
C Lighting on/off switches

High intensity Cab Tail



On Off

Location Add-on parts



Replacement Parts

1	motor	585-105
2	PCB 21pin	585-132
3	driveshaft	585-117
4	underframe	585-133
5	driving wheels	585-122
6	bogie	585-128
7	drive cup	585-116
8	bogie frame	585-130
9	coupling	BL1998
10	motor bracket	585-110

When ordering parts please quote the catalogue number together with the livery of the model (if appropriate) and number of the part required.

Parts are subject to availability.

Packets of couplings suitable for this model are available from retailers: item ref 36-030

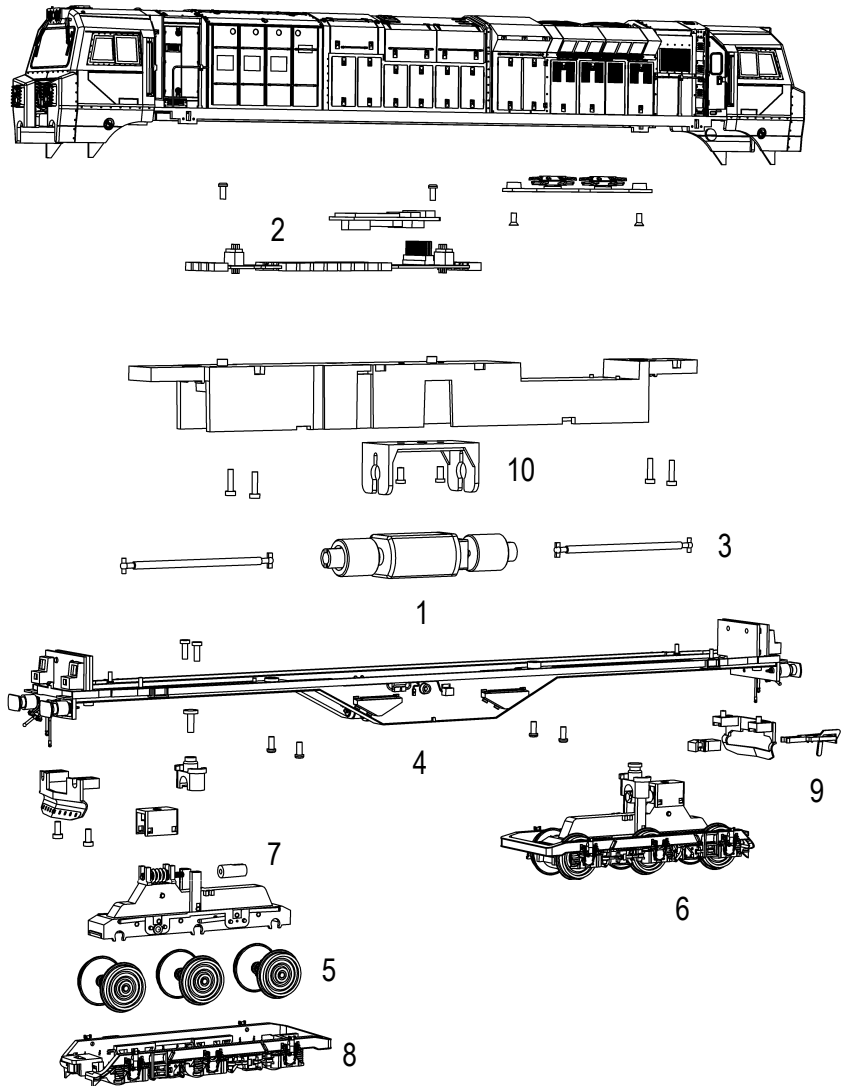
The model should be handled carefully as it has many finely detailed parts. It is not suitable for persons under 14 years.

Bachmann Europe Plc

Moat Way
Barwell
Leicestershire
LE9 8EY
01455 841756
www.bachmann.co.uk

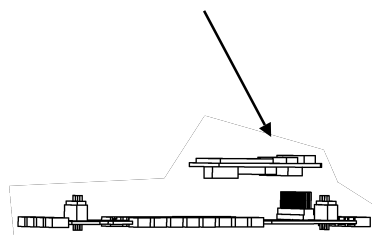
Freightliner® is a registered trademark of Freightliner Group Ltd
PowerHaul® is a registered trademark of GE

E3158-IS001
08/10 Rev 1



Location and alignment of 21-pin DCC decoder

Remove blanking plug and locate decoder with black fitting uppermost



Location of loudspeaker for aftermarket sound decoder

A speaker can be fitted into the space beneath the fans. Use connections SP+ and SP- on the main PCB

