



CLASS 85 ELECTRIC LOCOMOTIVE

Thank you for your choice of the Bachmann Branchline Class 85 electric locomotive.

General

The mechanism of this model requires running in (without a load) for approximately 1 hour, in each direction, at moderate speed to allow the gear train to bed in.

When required, sparingly lubricate the motor bearings using plastic compatible light oil and the gear train with model grease.

Bachmann Branchline locomotives are not suitable for use on track tighter than second radius (approx 18 inches).

DCC Decoder fitting to DC model

This model has a 21-pin connector for a decoder.

Use either a decoder with matching fitting (for example Bachmann 36-554).

It is recommended to run a DC loco in first on a DC power supply before installing a decoder. Do not run on a DCC system without a decoder fitted as damage to the motor may result.

Carefully remove the blanking board and locate the decoder onto the pins on the PCB following the instructions included with the decoder: the decoder fits so that the contact block is uppermost.

DCC Sound decoder fitting to DC model

There are loudspeaker connections on the main PCB, marked 'SP+' and 'SP-' that can be used when a sound decoder with a 21-pin connector is used. Follow any fitting instructions supplied with the decoder.

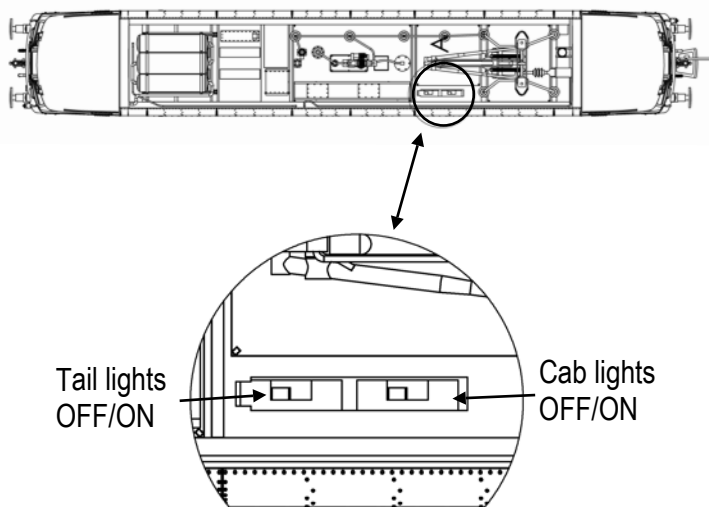
Control of lights with DCC

When using a decoder with the appropriate number of function outputs, the onboard lights can be controlled as follows:

F0 - Head lights / tail lights turned on / off

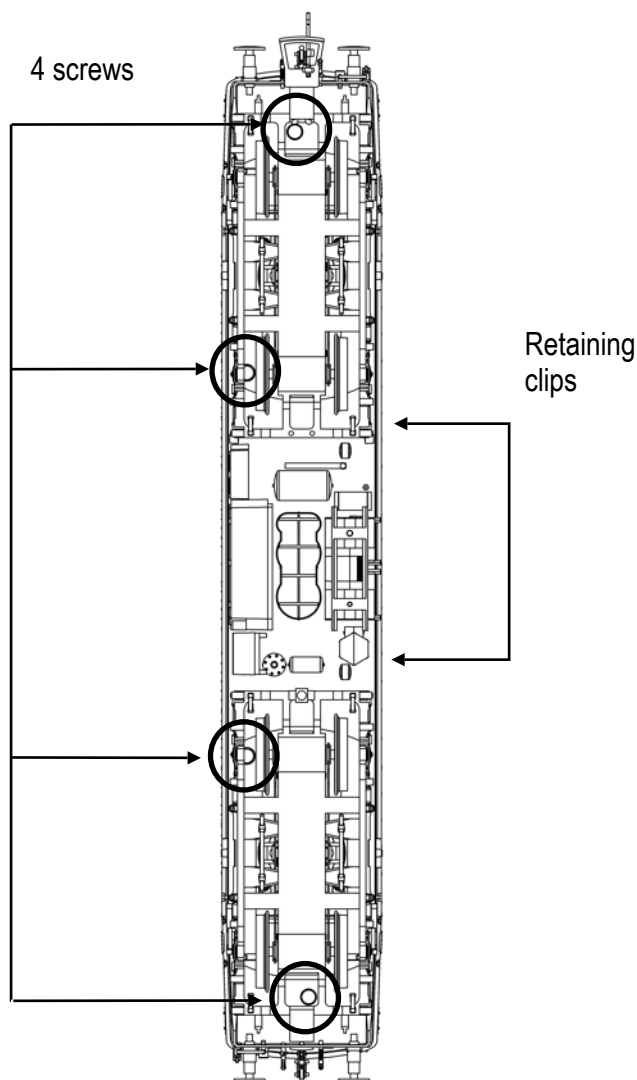
F1 - Cablights on / off

Additionally, the taillight and cablights can be turned off with the switches under the box beside the pantograph.



Switches located underneath roof box by pantograph

Location of fixing screws / clips



Replacement Parts

- | | |
|---|-------------------------|
| 1 | 675-106 motor |
| 2 | 675-101 baseplate |
| 3 | 675-102 PCB |
| 4 | 675-103 driveshaft |
| 5 | 675-104 bogie |
| 6 | 675-107 bogie tower top |
| 7 | 675-108 drive cup |

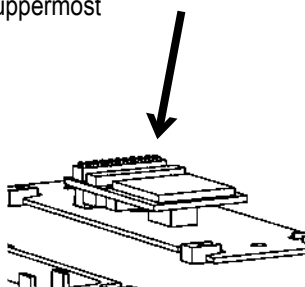
When ordering parts please quote the catalogue number together with the livery of the model (if appropriate) and number of the part required.

Parts are subject to availability.

Packets of couplers (item 36-030) suitable for the model are available from the retailers.

The model should be handled carefully as it has many finely detailed parts. It is not suitable for persons under 14 years.

DCC Decoder fitting
Remove blanking plug and fit decoder with black fitting uppermost



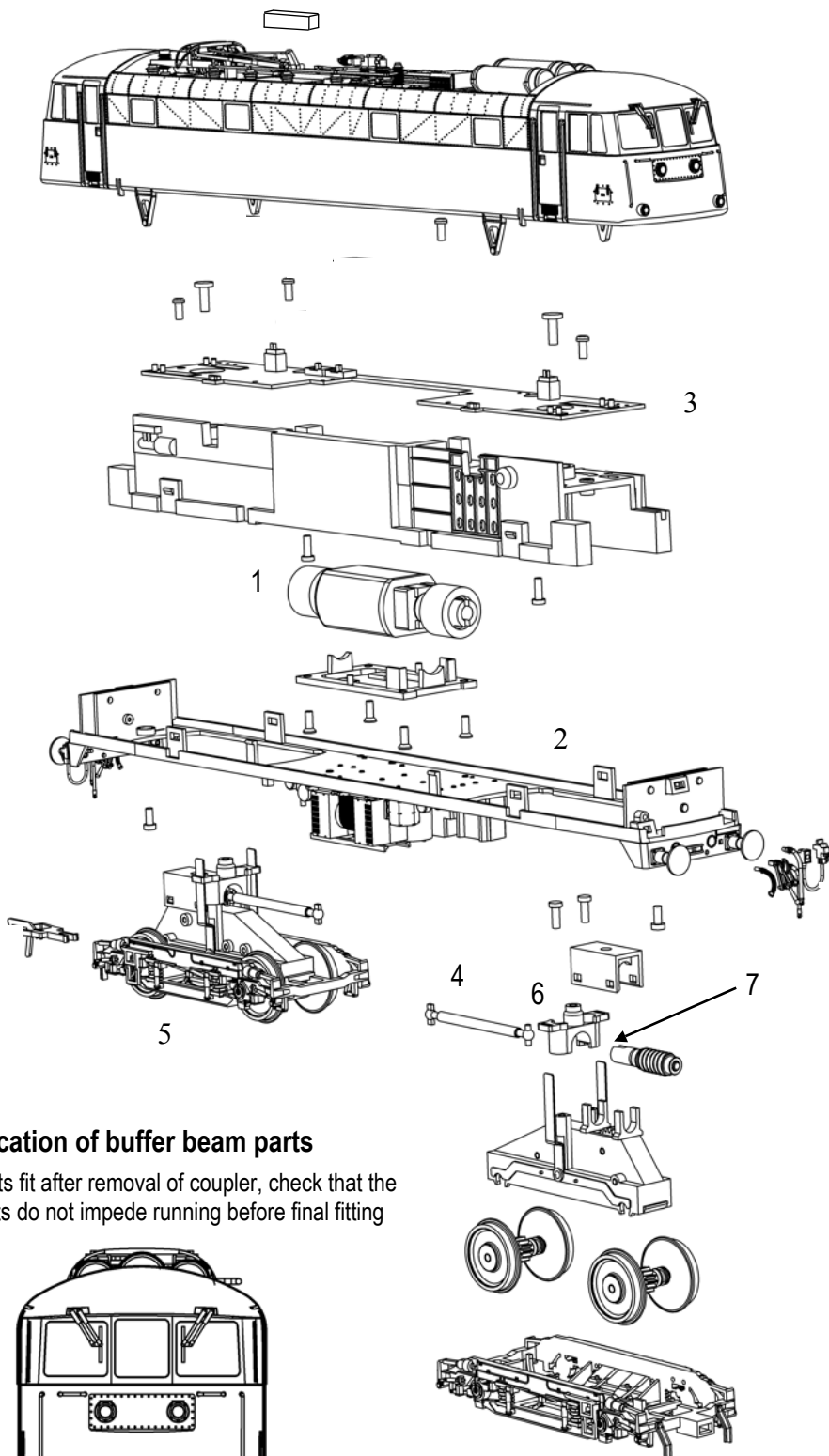
Bachmann Europe Plc

Moat Way
Barwell
Leicestershire
LE9 8EY

01455 841756

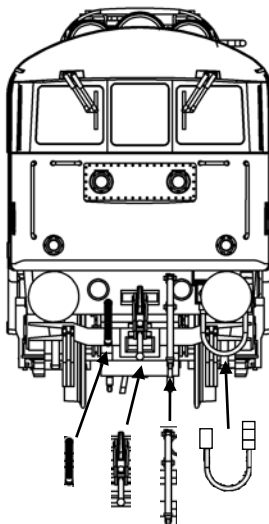
www.bachmann.co.uk

E3167- IS001
Rev 2 05/15



Location of buffer beam parts

Parts fit after removal of coupler, check that the parts do not impede running before final fitting



Pipe fits behind
buffer beam