

Thank you for your choice of the Graham Farish Peppercorn A2 4-6-2 locomotive.

## Running in

The mechanism of this model requires running in (without a load) for approximately 1 hour in each direction at moderate speed.

## Curves

This locomotive performs best on track with curves of second radius (**approx. 10.5 inches / 260 mm**) or greater but will run on first radius

## DCC Decoder fitting to non DCC fitted loco

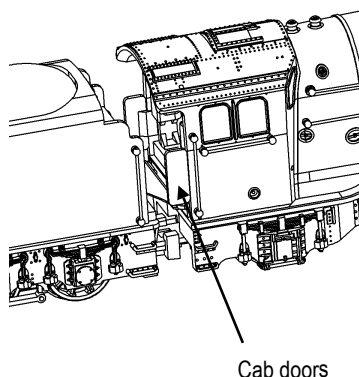
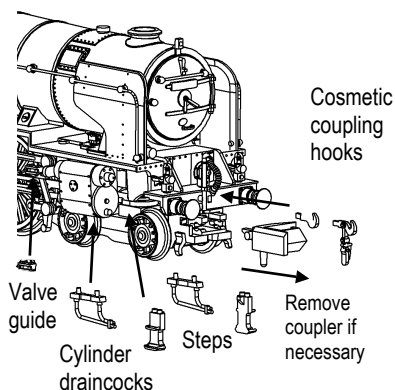
Run in as above using a DC power supply before fitting a DCC decoder

This model has an 6-pin NMRA/NEM 651 socket in the tender suitable for a decoder with an appropriate plug. Align the decoder as indicated on diagram overleaf

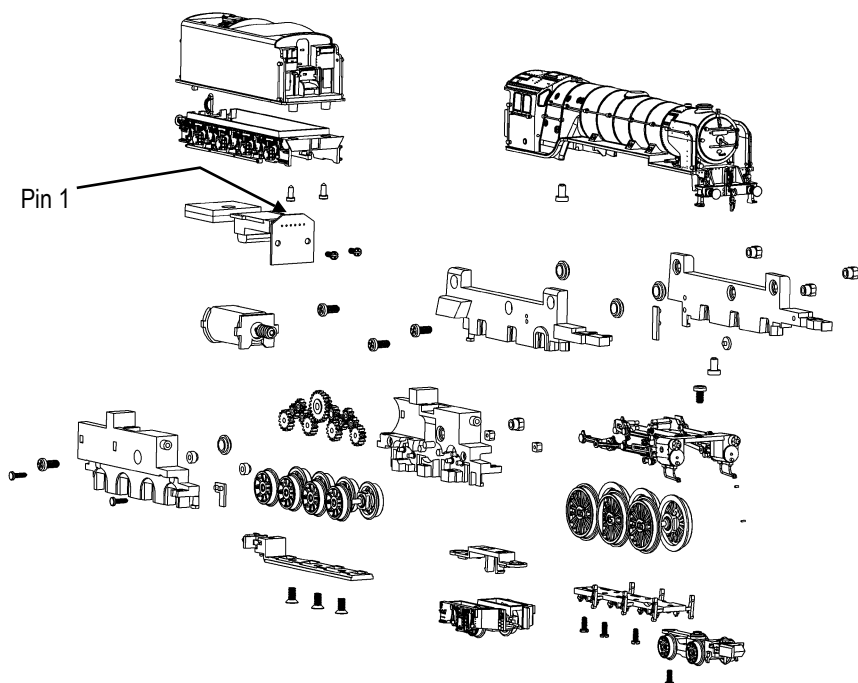
## Lubrication

When required, sparingly lubricate the motor bearings using plastic compatible light oil and the gear train with model grease. Suitable lubricants are Bachmann E-Z Lube item 99984 or Woodland Scenics 'HobbyLube' Lite Oil item HL654..

## Location of add-on detail parts

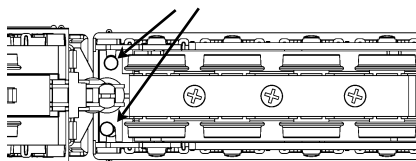


Graham Farish N scale models should not be run on a DCC supply unless a DCC decoder has been fitted as damage to the motor may result



## Fitting DCC decoder

The tender shell is secured by the two small screws in the front corners



Carefully remove the blanking board above the motor and replace with a decoder aligning pin 1 to the mark on the PCB as indicated above

Parts subject to availability - please contact the Service Department

## Bachmann Europe Plc

Moat Way, Barwell, Leicestershire, LE9 8EY  
01455 841756

[www.bachmann.co.uk](http://www.bachmann.co.uk)

A2 rev 1 06/14 F7238-IS001