



# LMS 10000/10001 Diesel Locomotive

Thank you for your choice of the Bachmann Branchline LMS 10000/10001 diesel locomotive.

## General

The mechanism of this model requires running in (without a load) for approximately 1 hour, in each direction, at moderate speed to allow the gear train to bed in.

Bachmann Branchline locomotives are not suitable for use on track tighter than second radius (approx. 18 inches).

## Body removal

Remove the screws indicated the bogies and at each end of the locomotive

## DCC Decoder fitting to non DCC fitted loco

This model has a 21-pin interface for a decoder with an appropriate fitting. Fit the decoder as indicated with the black socket fitting uppermost. It is recommended that the running in as above be carried out using a DC power supply before moving on to fit a DCC decoder. If this is a 'DCC Onboard' or 'DCC Sound' model please also refer the accompanying DCC instruction sheet.

## Lights

When the locomotive is fitted with a DCC decoder the lights can be turned on/off with these handset keys:

F0 Directional head and tail lights

F1 Cab lights

The head lights can be set to either freight or passenger configuration and the tail lights can be separately turned off using the switches beneath the fuel/water tank

## Lubrication

When required, sparingly lubricate the motor bearings using plastic compatible light oil and the gear train with model grease as indicated on the diagram.

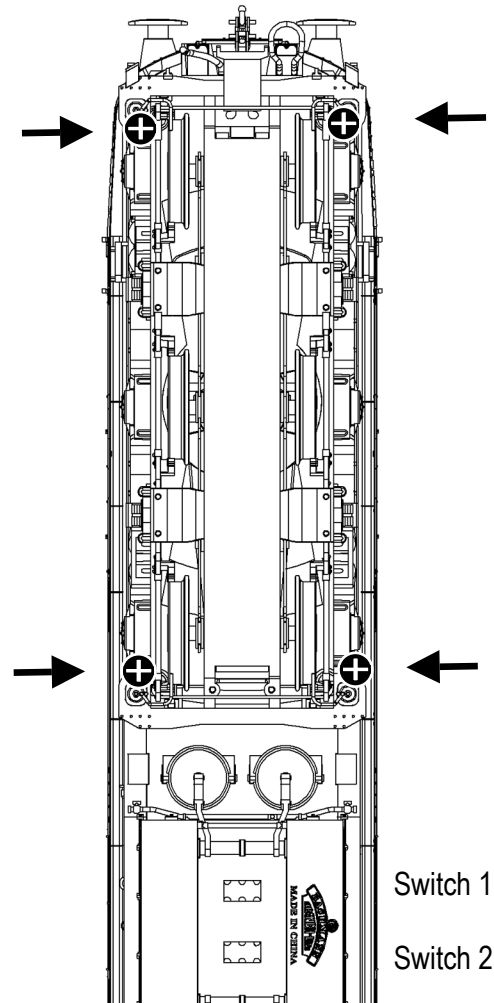
## Bufferbeam parts

The brake pipes fit as shown on the diagram. The pipes are not suitable for use with the functional coupler on tight curves.

The model should be handled carefully as it has many finely detailed parts. It is not suitable for persons under 14 years.

## Location of body fixing screws

At both ends of loco, by corners of bogies

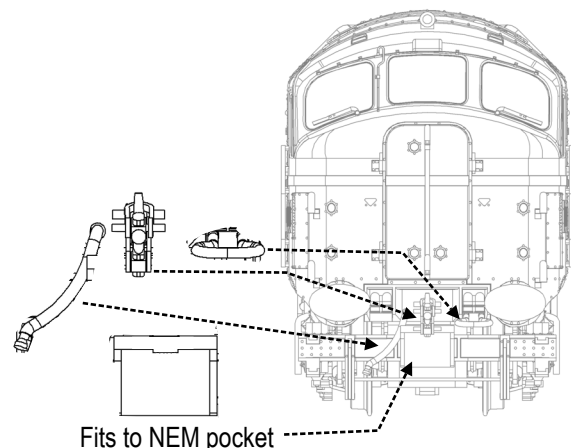


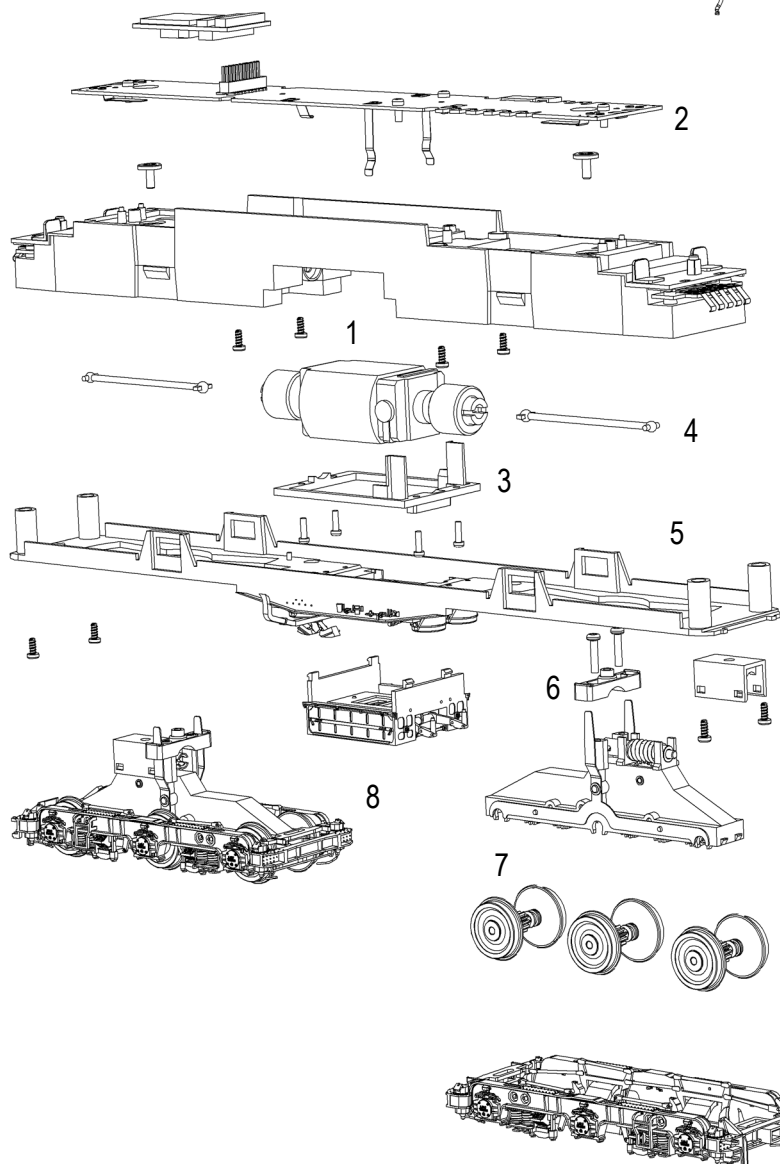
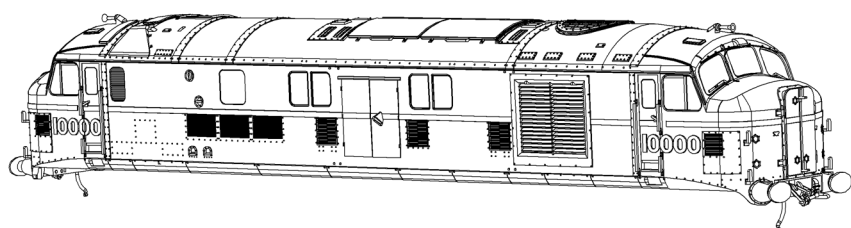
Switch 1 - Front lights

Selects passenger or freight indication

Switch 2 - Tail light turned on / off

## Location of add on buffer beam parts





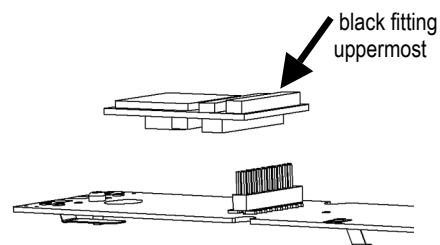
## Replacement Parts

- |   |                         |
|---|-------------------------|
| 1 | 991-006 motor           |
| 2 | 991-008 PCB             |
| 3 | 991-010 motor bracket   |
| 4 | 991-009 driveshaft      |
| 5 | 991-013 underframe      |
| 6 | 991-013 bogie tower top |
| 7 | 991-032 driving wheels  |
| 8 | 991-022 bogie           |

## Fitting DCC Decoder

Step 1 - remove blanking plug

Step 2 - fit decoder to pins



When ordering parts please quote the catalogue number together with the livery of the model (if appropriate) and number of the part required. Parts are subject to availability. Packets of couplers (item 36-030) suitable for this model are available from retailers

**Bachmann Europe Plc**  
Moat Way  
Barwell  
Leicestershire  
LE9 8EY  
01455 841756  
[www.bachmann.co.uk](http://www.bachmann.co.uk)

**The model should be handled carefully as it has many finely detailed parts. It is not suitable for persons under 14 years.**

© Bachmann Europe plc 2013

E3199-IS002  
11/13 Rev 2  
Printed in China