

Thank you for your choice of the Bachmann Branchline Cravens Class 105 diesel multiple unit.

General

The mechanism of this model requires running in (without a load) for approximately 1 hour in each direction at moderate speed to allow the gear train to bed in.

When required, sparingly lubricate the motor bearings using plastic compatible light oil and the gear train with model grease.

Bachmann Branchline models perform best on curves of second radius (approx 18 inches / 450mm) or greater.

Body removal

The bodyshell is secured by 4 clips on each side of the body in the locations shown. Ease the body away from the chassis at these points to release and remove the chassis. If necessary use a strip of thin plastic slid into each side to keep the clips open as the next is released.

DCC Decoder fitting to DC model

- This model has an 8-pin socket for a decoder (for example Bachmann 36-552 or 36-553 are suitable)
- It is recommended to run in a DC model first on a DC power supply to confirm correct operation before installing a decoder.
- Carefully remove the blanking plug that allows the unit to run on DC and plug in the decoder.
- A decoder is required in both motorised and trailer cars.

Some DCC systems may be unable to program decoders in the trailer car because the LEDs used for lighting provide little load: if so, program the decoder in the powered car and then move it to the trailer car.

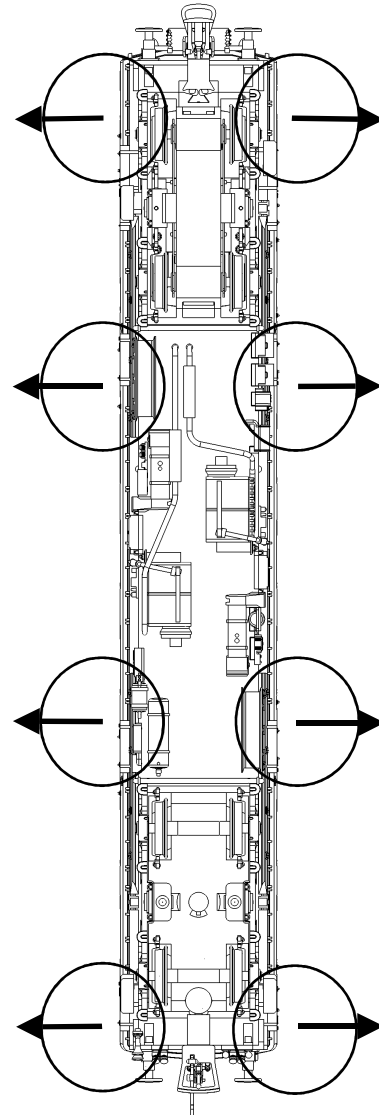
If the trailer car directional lights operate incorrectly it is necessary to *reverse the direction of running* of the decoder installed in the car: if so, increase the value of CV29 by 1: CV29 needs to be given a value of 7 when used with short addresses or 39 when used with long addresses. If necessary, please refer to instructions for the decoder and DCC system.

Control of lights with DCC

When using a decoder with the appropriate number of function outputs, the onboard lights can be controlled as follows:

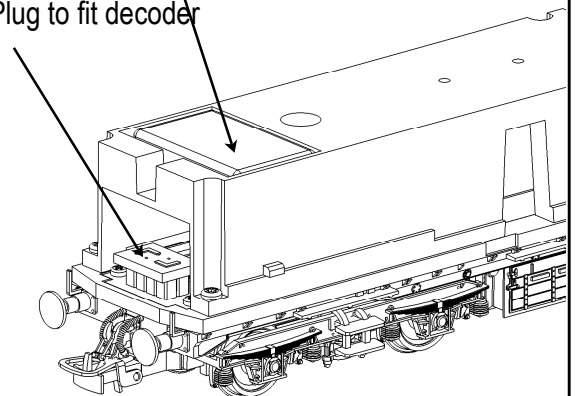
- F0 - Head lights / tail lights turned on / off
- F1 - interior lights on/off

(note: the lights do not work if the decoder is reversed in the socket)



Space for decoder

8-pin socket
Remove blanking
Plug to fit decoder



Replacement Parts

- | | |
|----|---------------------------|
| 1 | 325-211 motor |
| 2 | 325-213 PCB |
| 3 | 325-214 driveshaft |
| 4 | 325-215 geared wheels |
| 5 | 325-212 motor bracket |
| 6 | 325-216 bogie (unpowered) |
| 7 | BL2007 drive cup |
| 8 | 325-030 bogie frame |
| 9 | BL1998 outer coupling |
| 10 | BL2005 inner coupling |
| 11 | BL1996 coupling pocket |
| 12 | 325-217 bogie complete |
| 13 | 325-218 pipes/coupling |

When ordering parts please quote the catalogue number together with the livery of the model (if appropriate) and number of the part required.

Parts are subject to availability.

Packets of couplers and pockets suitable for this model are available from retailers

Outer end ref 36-030

Inner end ref 36-055

Bachmann Europe Plc

Moat Way

Barwell

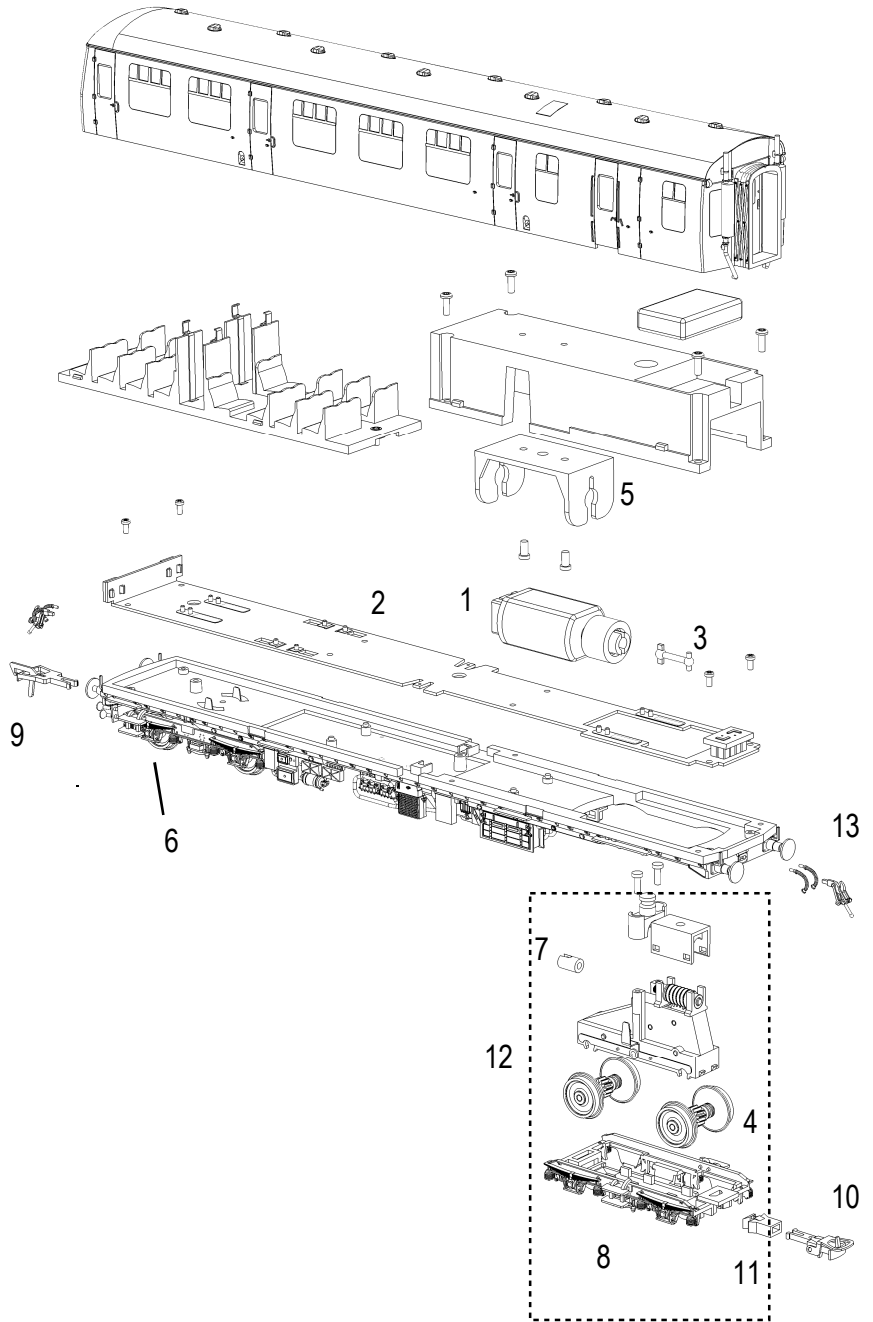
Leicestershire

LE9 8EY

01455 841756

www.bachmann.co.uk

The model should be handled carefully as it has many finely detailed parts. It is not suitable for persons under 14 years.



Cosmetic couplers and pipes - fit to the holes in the buffer beams as indicated

