



Class 108 Diesel Multiple Unit

Thank you for your choice of the Class 108 Diesel Multiple Unit.

Replacement parts

- 1 900-211 motor
- 2 900-301 complete bogie
- 3 900-214 lower pcb
- 4 900-302 unpowered bogie

The Mechanism of this model requires running in (without a load) for approximately half an hour in each direction at a moderate speed, to allow the gear train to bed in.

When required, sparingly lubricate at the points shown on the diagram using a plastic compatible model lubricant.

Bachmann Branchline locomotives are not suitable for use on track tighter than second radius (approx. 18 inches / 450 mm).

Body removal

Remove the screw indicated.

The body is also clipped along its length.

DCC Decoder fitting

The model has a standard 8-pin NMRA/NEM decoder socket.

Run the model in first using a DC power supply before fitting the decoder.

Plug decoder into socket following the instructions included with the decoder. Pin 1 is marked on the circuit board. Place decoder in the location above the motor block.

Use a 1 amp rated decoder.

Trailer car: also fit a decoder to the socket in the socket in the trailer. Give both decoders the same address.

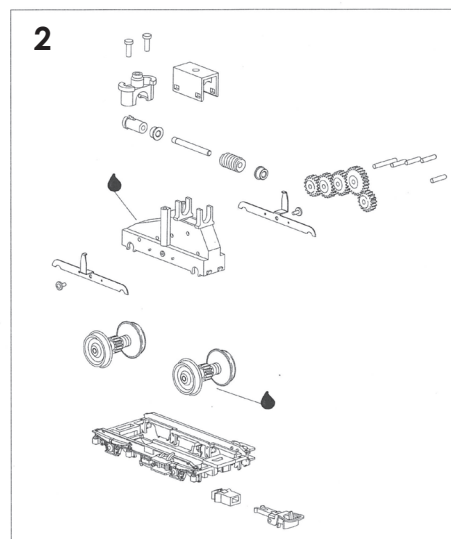
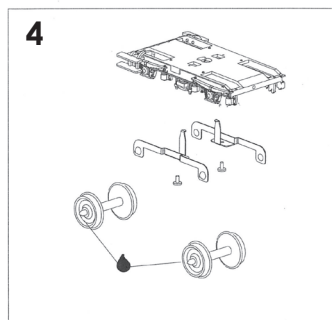
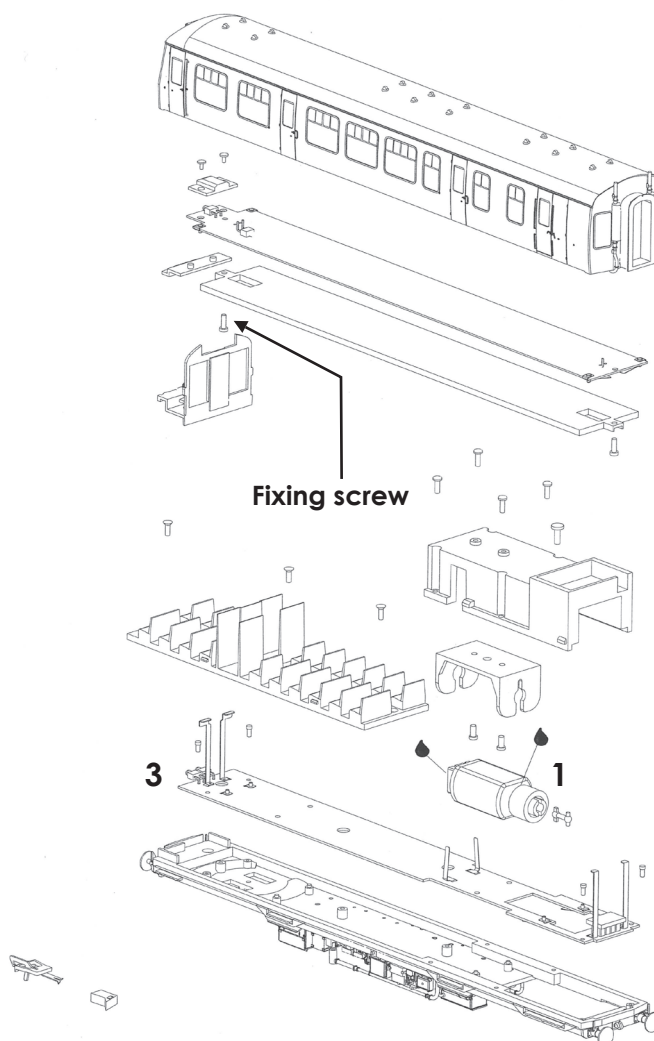
Replacement parts

When ordering parts please quote the catalogue number together with the livery of the model (if appropriate) and number of the part required.

Parts are subject to availability.

Packets of inter car couplers (item 36-026), and packets of outer end couplings (36-030) suitable for this model are available from retailers.

The Model should be handled carefully as it has many finely detailed parts. It is not suitable for persons under 14 years.



Bachmann Europe Plc
Moat Way
Barwell, Leicestershire
LE9 8EY
01455 841756