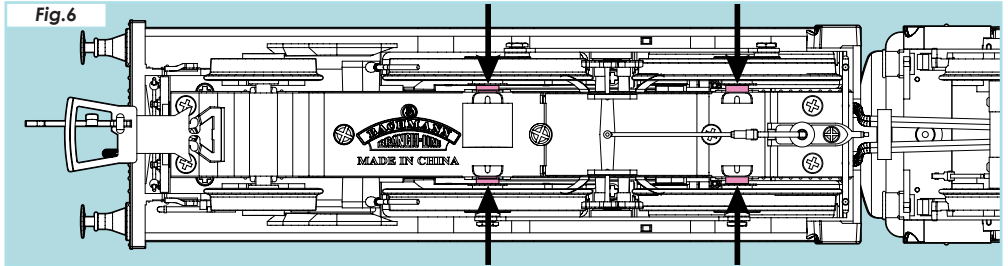


4. Lubrication

All Bachmann Branchline Locomotives are supplied ready lubricated and can be used straight from the box. Over time your locomotive will require some additional lubrication, when will depend on the frequency of use and storage, so please inspect your model on a regular basis.

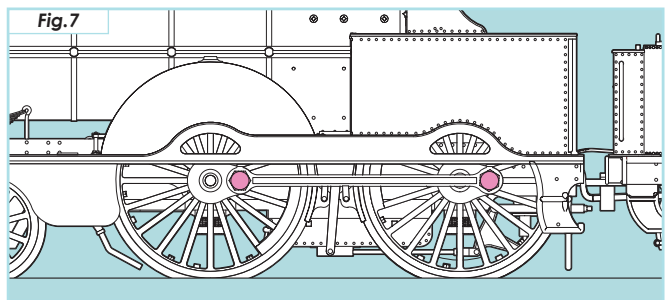
If the driving wheel axles appear dry and no lubricant is visible (where shown pink in **fig.6**), it would be advisable to lubricate your model.



All moving parts of the connecting rods will occasionally need oiling. Apply a single drop of oil to the areas indicated in pink below (**fig.7**) and to the corresponding points on the other side.

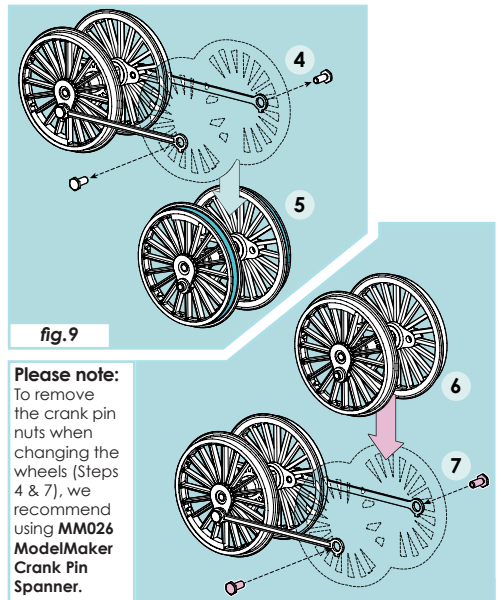
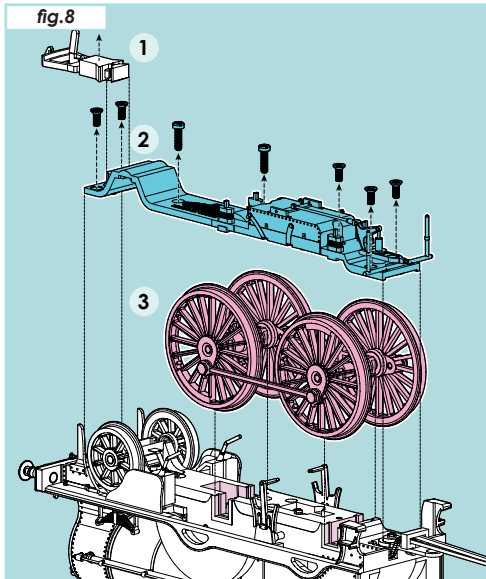
Please note:

A plastic compatible lubricant is required. We recommend the use of either **Bachmann Trains E-Z Lube Light Gear Oil 99984** or **Woodland Scenics Hob-E-Lube Lite Oil WHL654**.



5. Changing Wheel Sets & Traction Tyres

All of our LNWR Improved Precedent locomotives come with the rear set of driving wheels ready fitted with traction tyres to increase the hauling capacity of the locomotives. A corresponding set of rear driving wheels are supplied without traction tyres, please follow the step-by-step instructions below to swap the driving wheels or replace the traction tyres if required.



Please note:
To remove the crank pin nuts when changing the wheels (Steps 4 & 7), we recommend using **MM026 ModelMaker Crank Pin Spanner**.