

Thank you for your choice of the Bachmann Branchline Fairburn 2-6-4 tank locomotive.

## Running in

The mechanism of this model requires running in (without a load) for approximately 1 hour, in each direction at moderate speed.

## Curves

Bachmann Branchline locomotives perform best on curves of second radius or greater (approx. 18 inches / 450 mm).

## Bodyshell removal

Remove the screws as indicated on the diagram (right).

## DCC Decoder fitting

This model has a 8-pin NEM652 socket for a decoder. Carefully remove the DC blanking plug and fit the decoder aligning to the numbers on the socket.

We recommend that the running in as above be carried out using a DC power supply before moving on to fit a DCC decoder

## Accessory parts

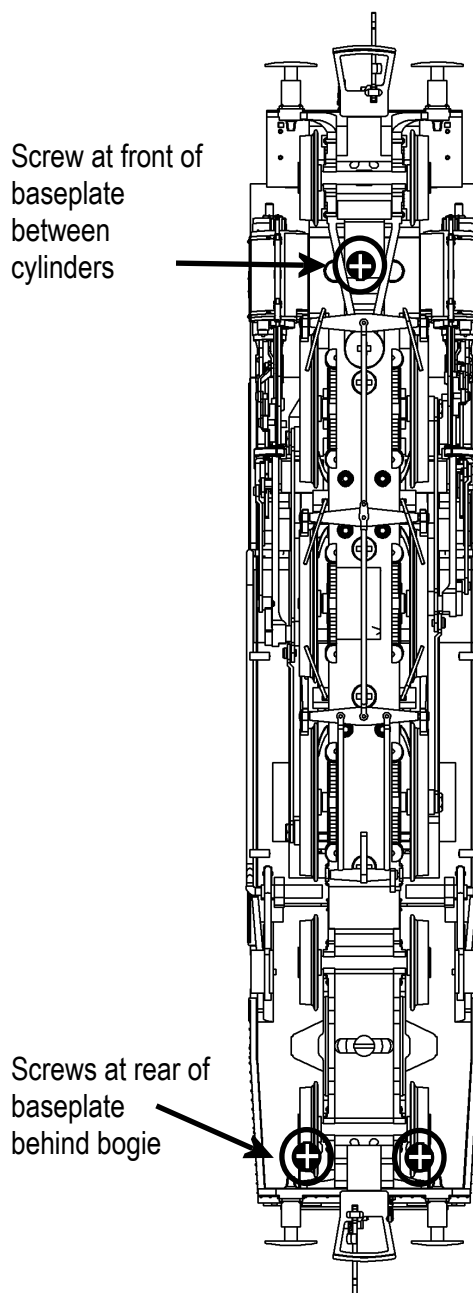
The separately supplied vacuum pipes and cylinder drain cocks fit as shown

## Lubrication

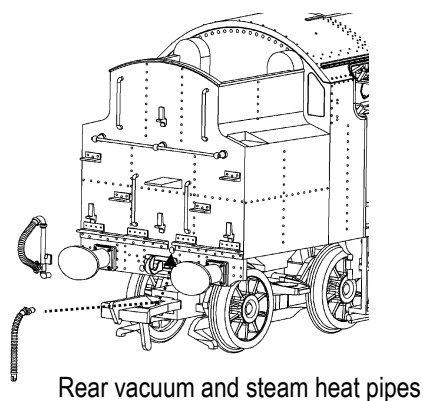
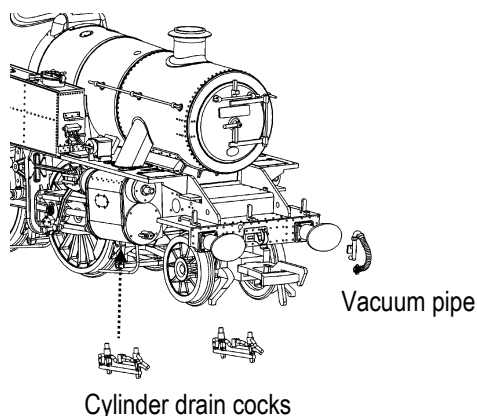
When required, sparingly lubricate the motor bearings using plastic compatible light oil and the gear train with model grease.

**The model should be handled carefully as it has many finely detailed parts. It is not suitable for persons under 14 years.**

## Bodyshell removal



## Location for accessory parts



## Parts

- 1 875-201 front truck
- 2 875-202 driving wheels
- 3 875-203 rear truck
- 4 875-211 motor
- 5 875-212 motor bracket
- 6 875-213 PCB
- 7 875-214 gears
- 8 875-221 cylinders / valve gear
- 9 875-231 baseplate

## Replacement parts

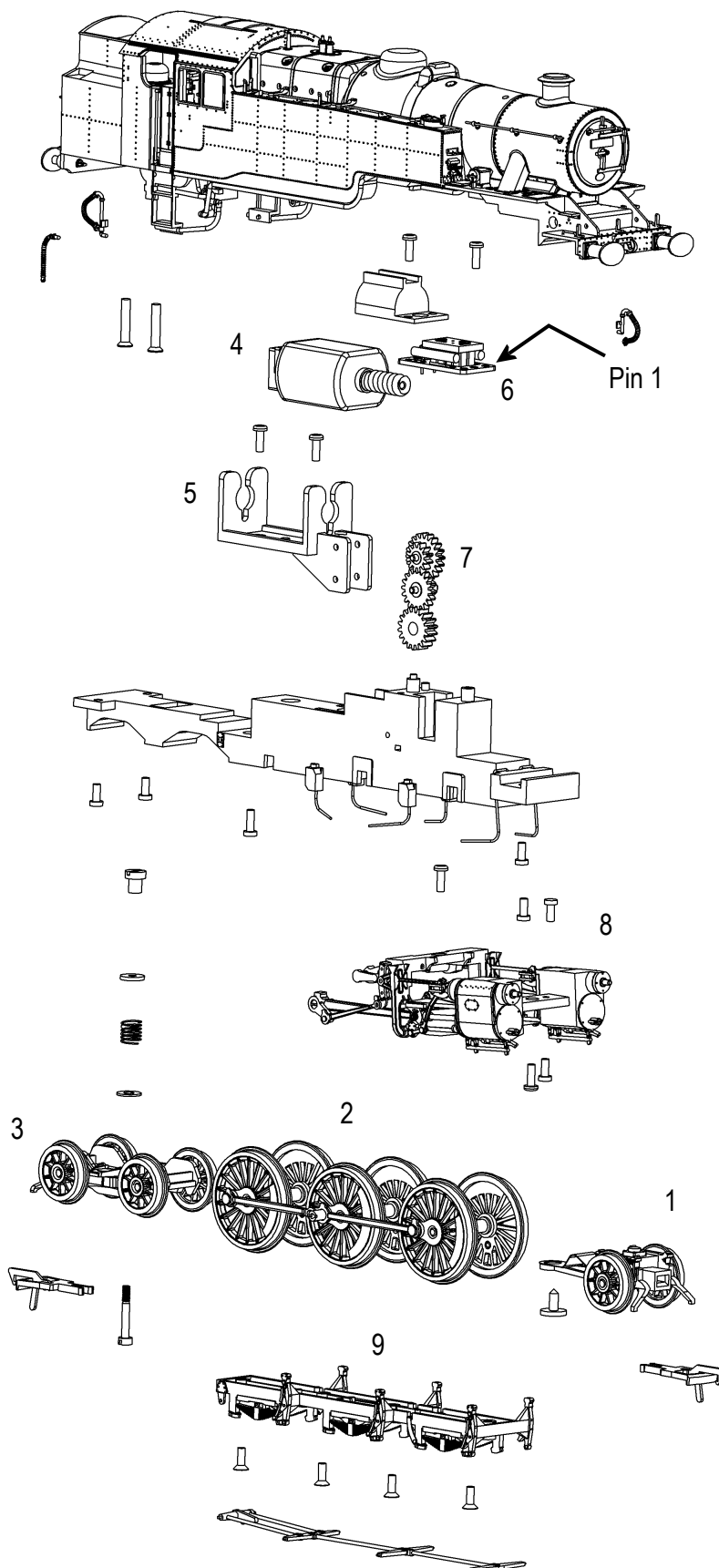
When ordering parts please quote the catalogue number together with the livery of the model (if appropriate) and number of the part required.

Parts are subject to availability.

Packets of couplers (item 36-030) and buffers (item 36-031) suitable for this model are available from retailers.

## DCC decoder fitting

Remove the DC blanking plug and fit the decoder aligning pin 1 of the plug (orange wire) to the mark on the PCB. The loco will run in reverse if the decoder is fitted the wrong way round. The decoder can be located in the smokebox of the loco



## Bachmann Europe Plc

Moat Way, Barwell, Leicestershire, LE9 8EY  
01455 841756

[www.bachmann.co.uk](http://www.bachmann.co.uk)

Fairburn rev 2 06/15  
E3287-IS001