

# Fairburn Class 4MT 2-6-4 tank locomotive

Thank you for your choice of the Graham Farish Fairburn Class 4MT 2-6-4 tank locomotive.

## Running in

The mechanism of this model requires running in (without a load) for approximately 1 hour in each direction at moderate speed.

## Curves

This locomotive performs best on track with curves of second radius (**approx. 10.5 inches / 260 mm**) or greater.

## Body removal

The bodyshell is secured by screw at the front of the baseplate and 2 under the baseplate as indicated overleaf.

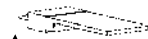
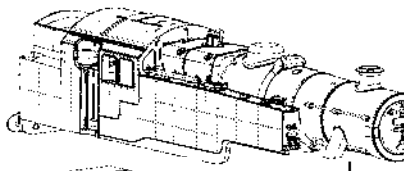
## Lubrication

When required, sparingly lubricate the motor bearings using plastic compatible light oil. Suitable lubricants are Bachmann E-Z Lube item 99984 or Woodland Scenics 'HobbyLube' Lite Oil item HL654.

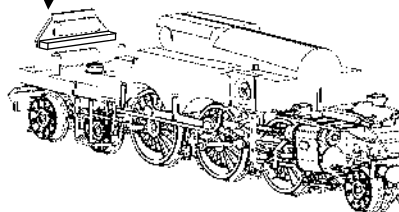
## DCC Decoder fitting

This model has an 6-pin NEM651 socket in the cab area suitable for a decoder with an appropriate fitting eg Bachmannn 36-558A decoder.

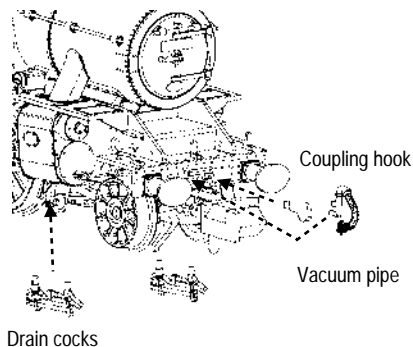
Run in as above using a DC power supply before fitting a DCC decoder; remove DC blanking plug from socket to fit decoder



Pin 6

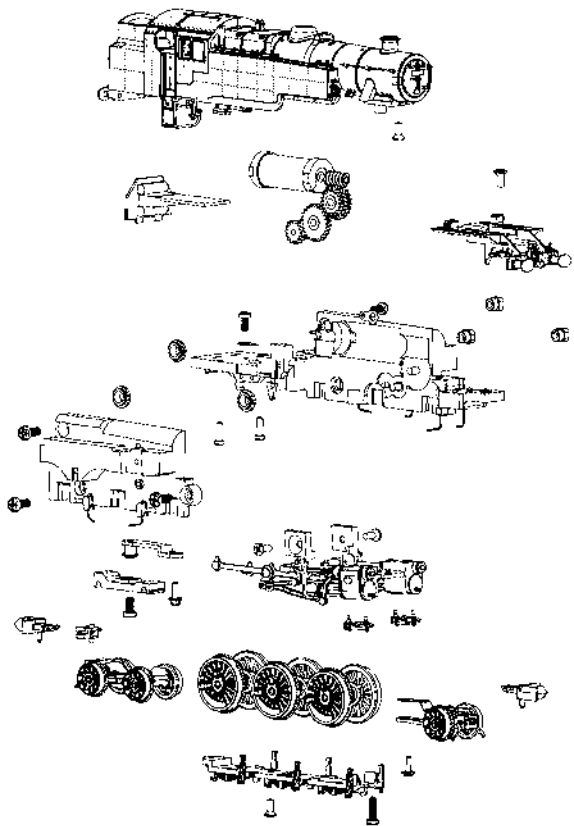


## Location of add on parts

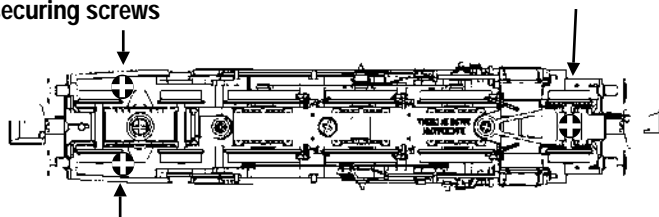


Do not run Graham Farish N scale models with a DCC controller unless a DCC decoder has been fitted as damage to the motor may result if run as analogue loco "0"

# Fairburn Class 4MT 2-6-4 tank locomotive



Location of body securing screws



Parts subject to availability - please contact  
the Service Department  
Replacement parts available in retail packs  
Couplings - item 379-405

Fairburn rev 1 10/13 F7275-IS001  
© Bachmann Europe plc 2013

**Bachmann Europe Plc**  
Moat Way, Barwell, Leicestershire,  
LE9 8EY

Tel: 01455 841756  
[www.bachmann.co.uk](http://www.bachmann.co.uk)