

Thank you for your choice of the Bachmann Branchline GWR 'Earl' / 'Dukedog' 4-4-0 Locomotive.

Running in

The mechanism of this model requires running in (without a load) for approximately 1 hour in each direction at moderate speed.

Curves

Bachmann Branchline locomotives perform best on curves of second radius or greater (approx. 18 inches / 450 mm).

Bodyshell removal

Remove the screws as indicated on the diagrams (right).

DCC Decoder fitting

This model has an 21-pin socket in the tender for a decoder. Remove the DC blanking plug and fit the decoder to the pins with the black fitting uppermost. We recommend that the running in as above be carried out using a DC power supply before moving on to fit a DCC decoder

Lubrication

When required, sparingly lubricate the motor bearings using plastic compatible light oil and the gear train with model grease.

Replacement parts

When ordering parts please quote the catalogue number together with the livery of the model (if appropriate) and number of the part required.

Parts are subject to availability.

Packets of couplers (item 36-030) and buffers (item 36-032) suitable for this model are available from retailers.

The model should be handled carefully as it has many finely detailed parts. It is not suitable for persons under 14 years.

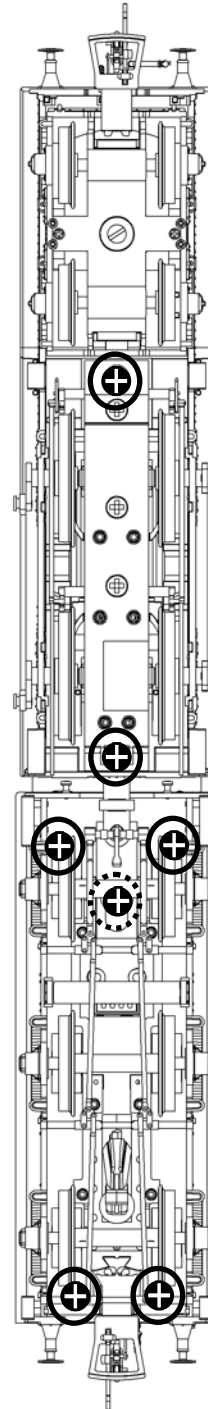
Bachmann Europe Plc

Moat Way, Barwell, Leicestershire, LE9 8EY
01455 841756

www.bachmann.co.uk

Dukedog rev 1 05/13
E3108-IS002

Bodyshell removal



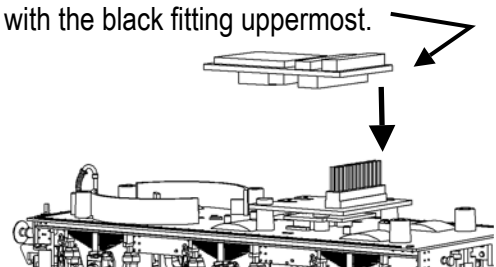
Loco chassis secured by screw at either end of baseplate. Also remove tender drawbar from chassis

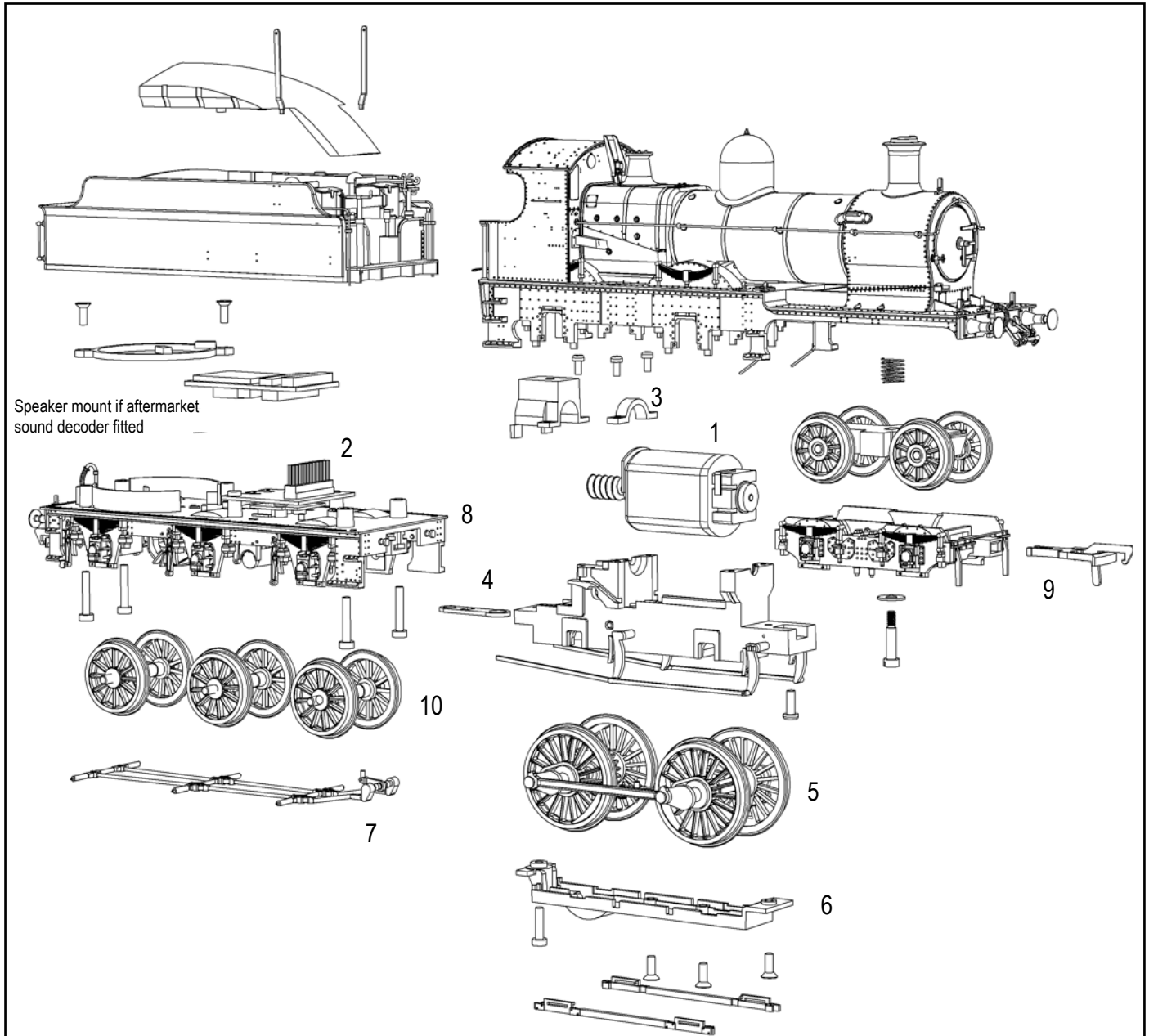
Adjustable length tender drawbar is secured by the screw indicated

Tender shell secured by screws at each corner

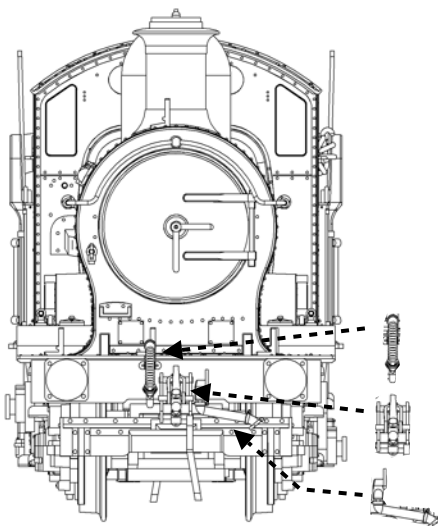
DCC Decoder fitting

Remove the DC blanking plug and fit the decoder to the pins with the black fitting uppermost.





Location of add-on buffer beam details



Vacuum pipe

Cosmetic screw coupler

Steam heat pipe

Parts

- | | |
|----|------------------------------------|
| 1 | 085-106 motor |
| 2 | 085-004 circuit board |
| 3 | 085-113 motor clips |
| 4 | 085-130 drawbar |
| 5 | 085-117 driving wheels |
| 6 | 085-118 baseplate |
| 7 | 085-123 tender brake rigging |
| 8 | 085-125 tender underframe coupling |
| 9 | coupling |
| 10 | 085-126 tender wheels |