

Thank you for your choice of the Bachmann Branchline Ivatt 2MT 2-6-0 mogul locomotive.

Running In

The mechanism of this model requires running in (without a load) for approximately 1 hour in each direction at moderate speed.

Curves

Bachmann Branchline locomotives are not suitable for use on track tighter than second radius (18inches).

Body removal

Locomotive: remove the pony truck to expose the fixing screw at the front of the locomotive.

Tender: remove coupler mount to expose fixing screw at rear

DCC Decoder fitting to non DCC fitted loco

This model has an 8-pin NMRA/NEM socket for a decoder with an appropriate plug located in the tender. The plug should be aligned so that Pin 1 (Orange wire) is aligned to the mark on the PCB. Note that the locomotive will run in backwards if the decoder is reversed.

We recommend that the running in as above be carried out using a DC power supply before moving on to fit a DCC decoder

Lubrication

When required, sparingly lubricate the motor bearings using plastic compatible light oil and the gear train with model grease.

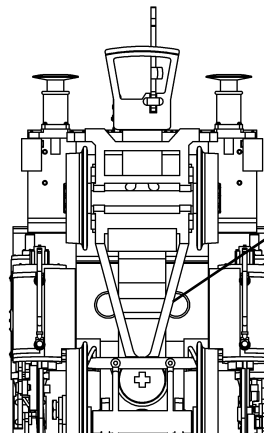
Buffer beam pipes, cab doors and front footsteps.

The locomotive vacuum pipes, cab doors and front footsteps fit as shown on the diagram. The front footsteps and cab doors may not be suitable for tight curves - check before fitting permanently.

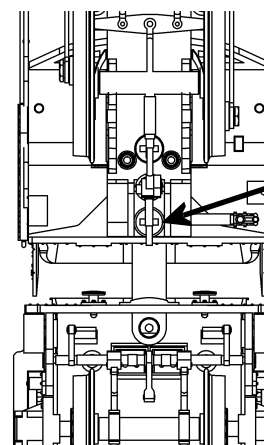
Short drawbar

Short drawbar is included as an alternative for use on large radius curves ONLY.

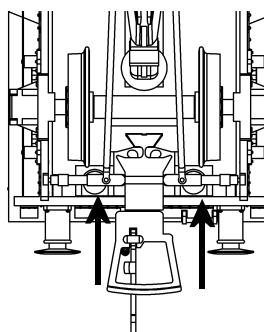
The model should be handled carefully as it has many finely detailed parts. It is not suitable for persons under 14 years.



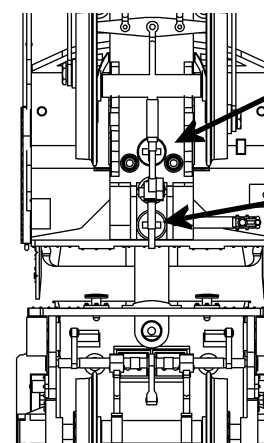
Front loco screw located underneath front pony



Rear loco screw located under brake actuator



Tender securing screw located under coupling pocket (secured by the two screws indicated)

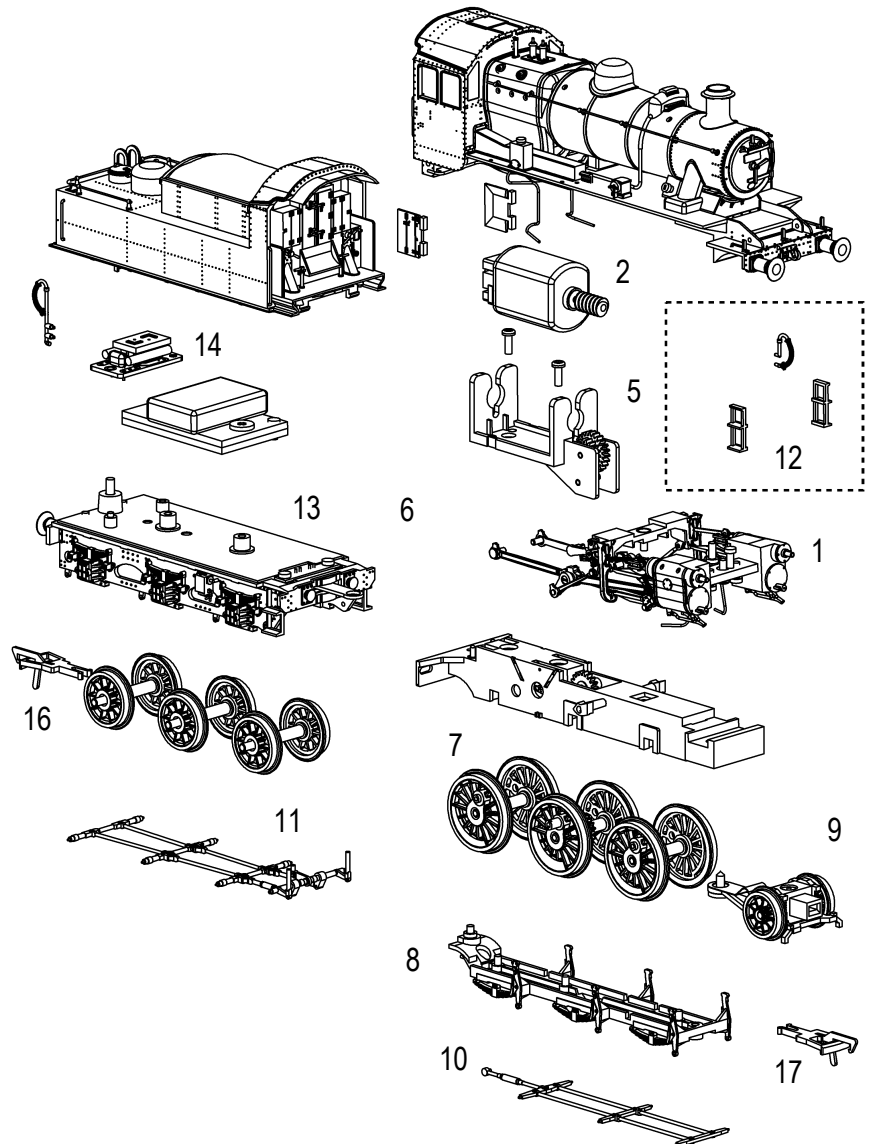


Loosen this screw to allow the drawbar to be removed from chassis

Remove this screw that holds drawbar in place

Parts

- 1 825-003 cylinders/valve gear
- 2 825-006 motor
- 3 825-011 gear
- 4 825-012 gear
- 5 825-013 motor bracket
- 6 825-014 drawbar
- 7 825-017 driving wheels
- 8 825-018 baseplate
- 9 825-021 front pony truck
- 10 825-022 loco brake rigging
- 11 825-023 tender brake rigging
- 12 825-024 accessory pack
- 13 825-027 tender underframe
- 14 350-004 tender PCB with socket
- 15 825-028 tender wire connector with plug
- 16 BL2006 NEM pocket
- 17 BL1999 coupling



Replacement parts

When ordering parts please quote the catalogue number together with the livery of the model (if appropriate) and number of the part required.

Parts are subject to availability.

Packets of couplers (item 36-030) and buffers (item 36-032) suitable for this model are available from retailers.

Bachmann Europe Plc

Moat Way, Barwell, Leicestershire, LE9 8EY

01455 841756

www.bachmann.co.uk

Ivatt 2MT rev3 03/08

E3292-ISO002