



Stanier Jubilee Class 4-6-0 Locomotive with DCC Sound

Thank you for your choice of the Bachmann Branchline Stanier 'Jubilee' 4-6-0 locomotive with onboard DCC Sound.

Running in

The mechanism of this model requires running in (without a load) for approximately 1 hour in each direction at moderate speed.

Curves

Bachmann Branchline locomotives are not suitable for use on track tighter than second radius (approx. 18 inches / 450 mm).

Body removal

Remove the two screws at front and back of the chassis as indicated on the diagram.

Lubrication

When required, sparingly lubricate the motor bearings using plastic compatible light oil and the gear train with model grease.

Add-on detail parts.

The cylinder draincocks, vacuum pipes, front footsteps and cab doors fit as shown. The parts may not be suitable for use on tight curves - check before fitting permanently.

Replacement parts

When ordering parts please quote the catalogue number together with the livery of the model (if appropriate) and number of the part required. Parts are subject to availability.

Packets of couplers (item 36-030) and buffers (item 36-032) suitable for this model are available from retailers.

Sound function

Please refer to the accompanying sheet for details of the sound features and operation

The model should be handled carefully as it has many finely detailed parts. It is not suitable for persons under 14 years.

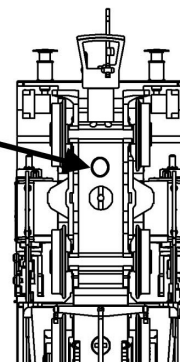
Bachmann Europe Plc

Moat Way, Barwell, Leicestershire, LE9 8EY
01455 841756

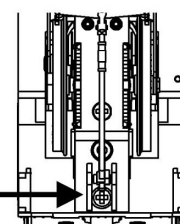
www.bachmann.co.uk

Jubilee rev 2 01/10
E3117-IS003

Front screw accessed through hole provided in bogie

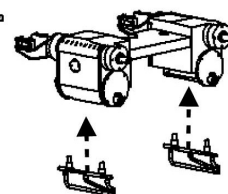


Rear screw

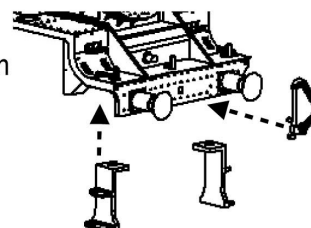


Add-on parts

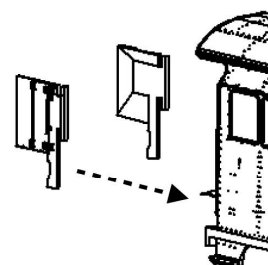
Cylinder Draincocks

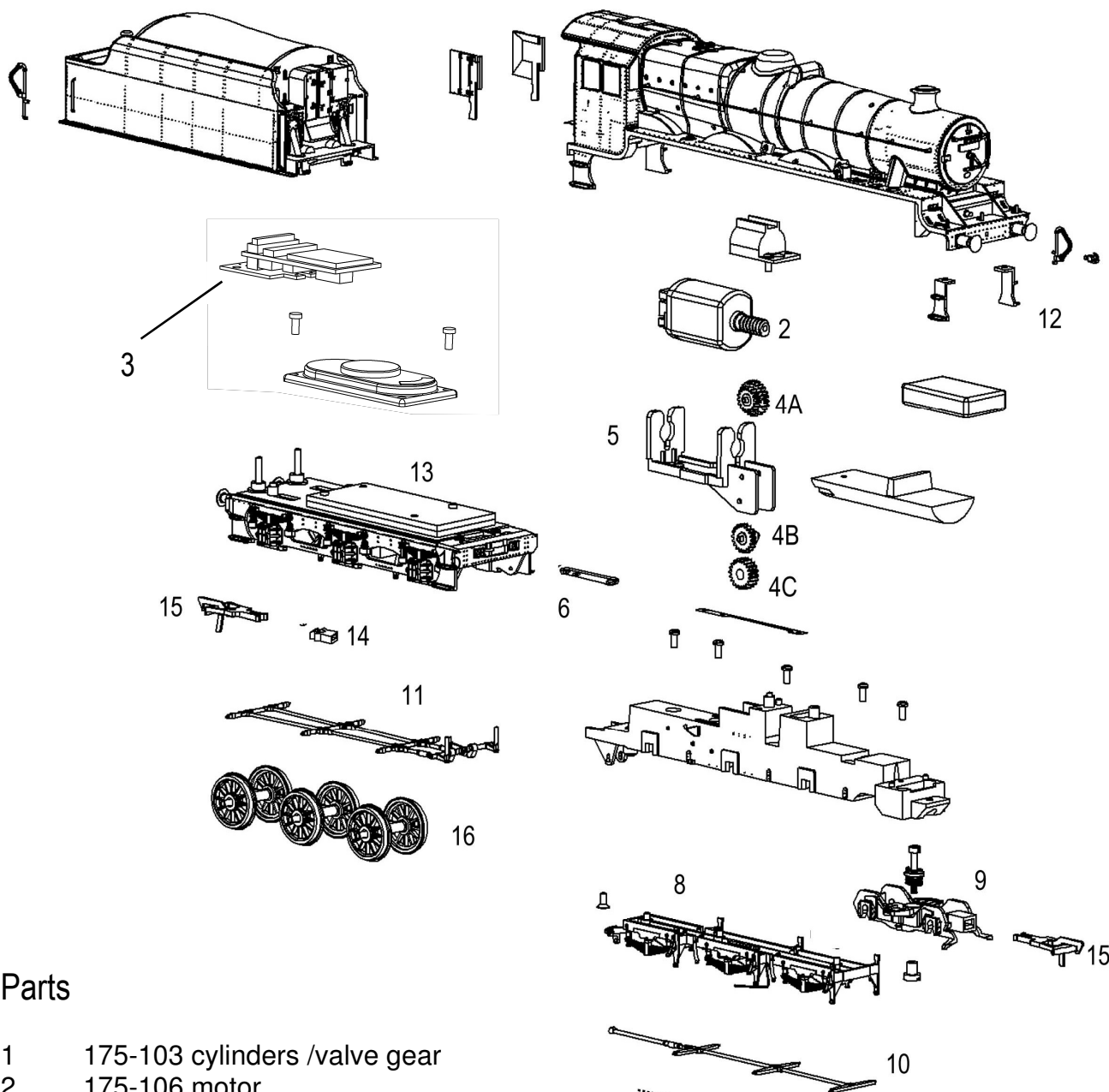


Front steps and vacuum pipe



Cab doors





Parts

- 1 175-103 cylinders /valve gear
- 2 175-106 motor
- 3 175-004 21 pin circuit board
- 4 175-112 gears
- 5 175-113 motor bracket
- 6 250-130 drawbar
- 7 175-117 driving wheels
- 8 175-118 baseplate
- 9 175-121 front bogie
- 10 175-122 loco brake rigging
- 11 175-123 Stanier tender brake rigging
- 12 175-124 accessory pack
- 13 175-127 Stanier tender underframe
- 14 BL2006 NEM pocket
- 15 BL1999 coupling
- 16 175-027 tender wheels

