

Thank you for your choice of the Bachmann Branchline Lancashire & Yorkshire Railway Aspinhall Class 5 2-4-2 Tank Locomotive.

### Running in

The mechanism of this model requires running in (without a load) for approximately 1 hour in each direction at moderate speed.

### Curves

Bachmann Branchline locomotives perform best on curves of second radius or greater (approx. 18 inches / 450 mm).

### Bodyshell removal

Remove the screws as indicated on the diagrams (right).

### DCC Decoder fitting

This model has an 6-pin socket in the bunker for a decoder. Remove the DC blanking plug and fit the decoder to the socket aligning with the indications on the PCB.. We recommend that the running in as above be carried out using a DC power supply before moving on to fit a DCC decoder

### Lubrication

When required, sparingly lubricate the motor bearings using plastic compatible light oil and the gear train with model grease.

### Replacement parts

When ordering parts please quote the catalogue number together with the livery of the model (if appropriate) and number of the part required.

Parts are subject to availability.

Packets of couplers (item 36-030) suitable for this model are available from retailers.

**The model should be handled carefully as it has many finely detailed parts. It is not suitable for persons under 14 years.**

## Bachmann Europe Plc

Moat Way, Barwell, Leicestershire, LE9 8EY  
01455 841756

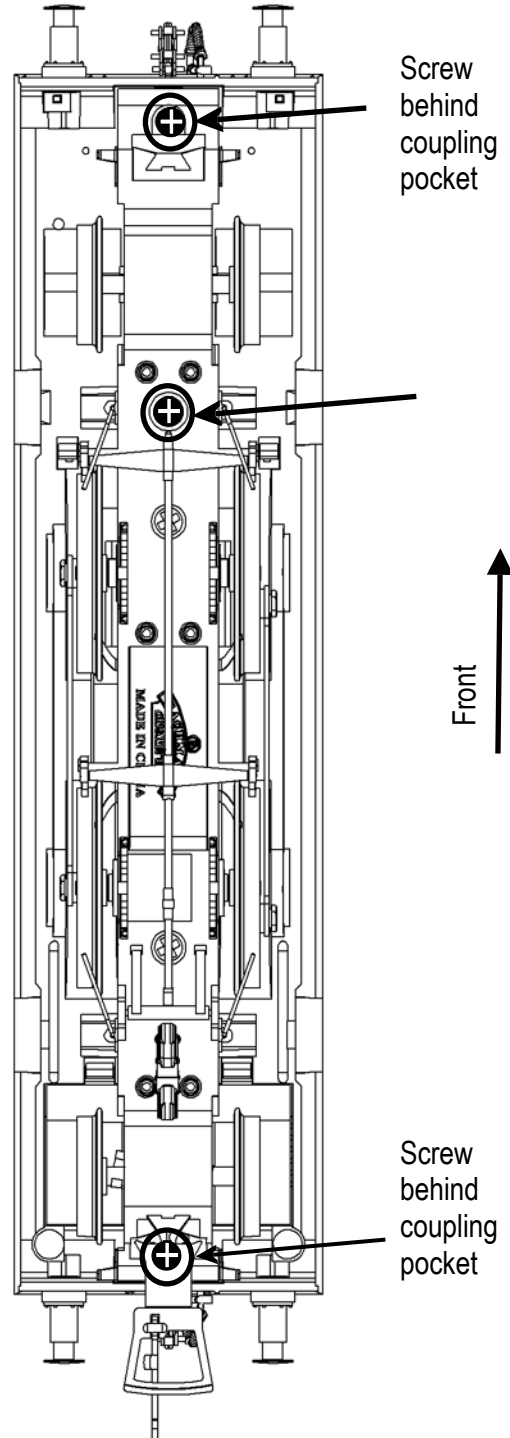
[www.bachmann.co.uk](http://www.bachmann.co.uk)

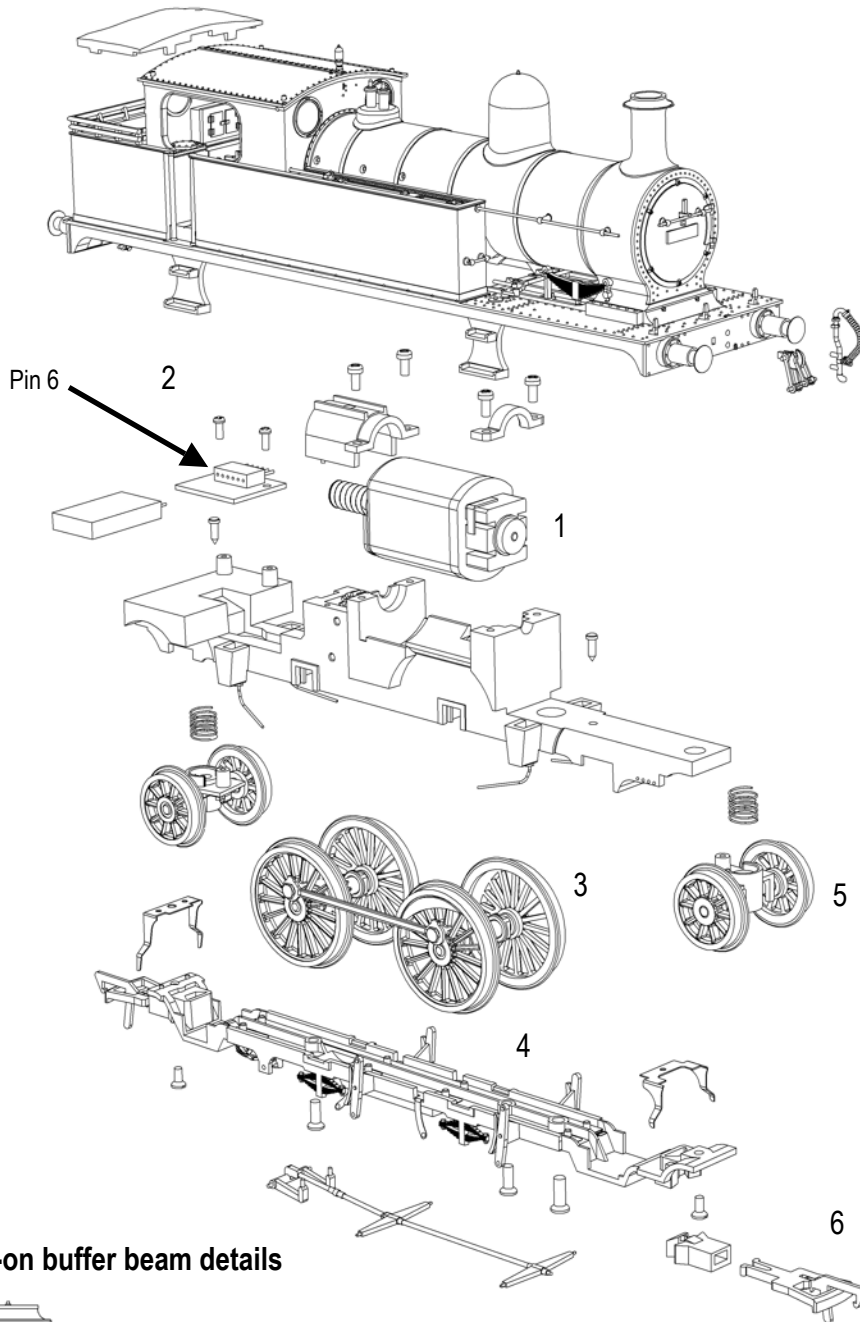
L&Y 2-4-2T rev 1 05/13

E3116-IS001

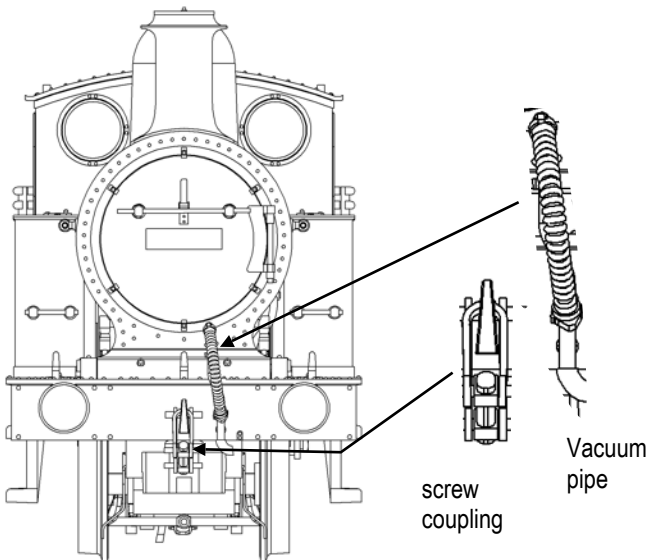
### Bodyshell removal

Remove screws indicated





Location of add-on buffer beam details



## Parts

- 1 160-106 motor
- 2 160-004 circuit board
- 3 160-117 driving wheels
- 4 160-118 baseplate
- 5 160-119 pony wheels
- 6 36-030 coupling