

# MIDLAND PULLMAN

Thank you for your choice of the Graham Farish Metro-Cammell Midland Pullman diesel train.

## Running in

The mechanism of this model requires running in (without a load) for approximately 1 hour in each direction at moderate speed.

## Curves

This model performs best on 12" radius curves or greater but will operate on 9" radius curves.

## Body removal

The bodyshell clips over the chassis and can be removed by carefully easing the body away from the chassis starting by the inner bogie

## Lubrication

When required, sparingly lubricate the motor bearings using plastic compatible light oil and the gear train with model grease. Suitable lubricants are Bachmann

E-Z Lube item 99984 or Woodland Scenics 'HobbyLube' Lite Oil item HL654.

## DCC Decoder fitting

The model has a NMRA/NEM 651 6-pin decoder socket in both of the end cars.

Follow the instructions supplied with the decoder. Remove the blanking board and fit the decoder, aligning as shown. We recommend that the model is run in first using a DC supply before fitting a decoder.

## Sound decoder / loudspeaker fitting

Space is provided at the gangway end of the power car for loudspeaker to be used in conjunction with a suitably sized sound decoder.

## Order of cars

Arrange the cars in the order A to F as indicated underneath.

Alternative drawbars are provided as a replacement for the couplers for a more permanent close coupled unit. The couplers pull out of the NEM pocket



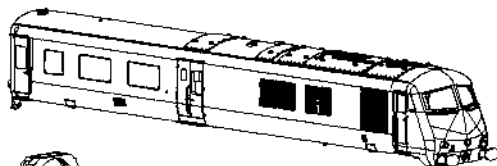
## Bachmann Europe Plc

Moat Way, Barwell, Leicestershire LE9  
8EY 01455 841756

[www.bachmann.co.uk](http://www.bachmann.co.uk)

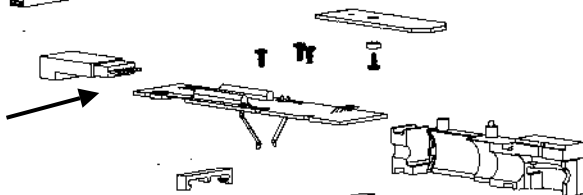
Pullman rev 1 07/12  
F7174-IS001

Do not run Graham Farish N scale models with a DCC controller unless a DCC decoder has been fitted as damage to the motor may result if run as analogue loco "0"

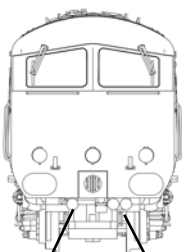


DCC decoder  
orientation

Pin 1



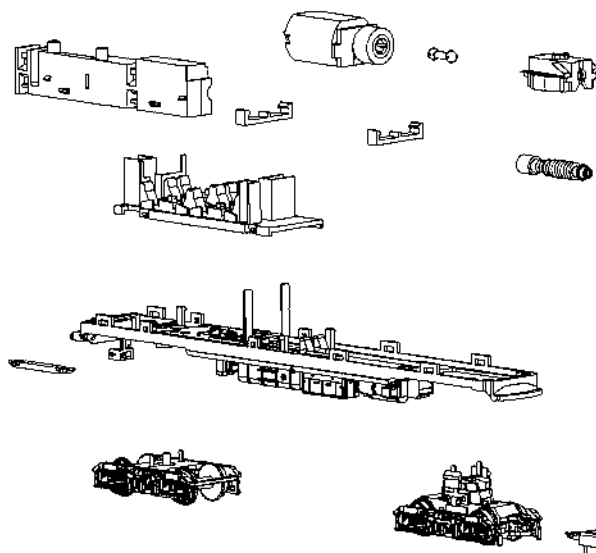
**Location of buffer  
beam fittings**



Single



Double



To fit the horns to the holes under the nose first remove the NEM coupling pocket from the bogie frame.

The model should be handled carefully as it has many finely detailed parts. It is not suitable for persons under 14 years

When ordering parts please quote the catalogue number together with the livery of the model (if appropriate) All parts are subject to availability.