

Thank you for your choice of the Bachmann Branchline Midland Pullman diesel electric multiple unit.

General

The mechanism of this model requires running in for approximately half an hour in each direction at moderate speed to allow the gear train to bed in.

When required, sparingly lubricate the motor bearings using plastic compatible light oil and the gear train with model grease.

Bachmann Branchline trains are not suitable for use on track tighter than second radius (18 inches).

Body removal

The power car body is secured by 4 screws as indicated on the diagram right. Take care to avoid damage to the underfloor equipment details.

DCC Decoder

This model has a 21-pin mtc connector for a decoder in each power car and is supplied fitted with decoders.

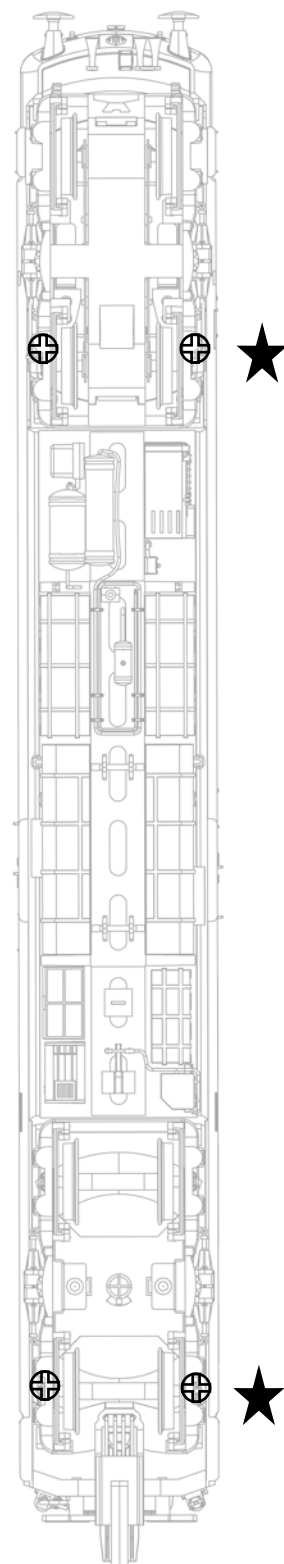
If removing a decoder and replacing with a DC blanking plug note that the decoder or blanking plug fits so that the black contact block is uppermost. (See diagram on page 2)

Control of lights with DCC

When using a decoder with the appropriate number of function outputs, the onboard lights can be controlled as follows:

- F0 - Directional lights and internal lights turned on / off
- F1 - table lights turned on / off
- F2 - cab lights turned on / off

Location of the power car body securing screws



Order of cars

The cars of the unit must be arranged in the order shown - the cars are labelled 'A' to 'F' on their sides. It may be preferable to connect each half "A" / "B" / "C" and "D" / "E" / "F" together and then join the two halves together on the track

There is no electrical connection between the two halves of the train
The unit can be run as a shorter train by omitting cars "B" or "E"

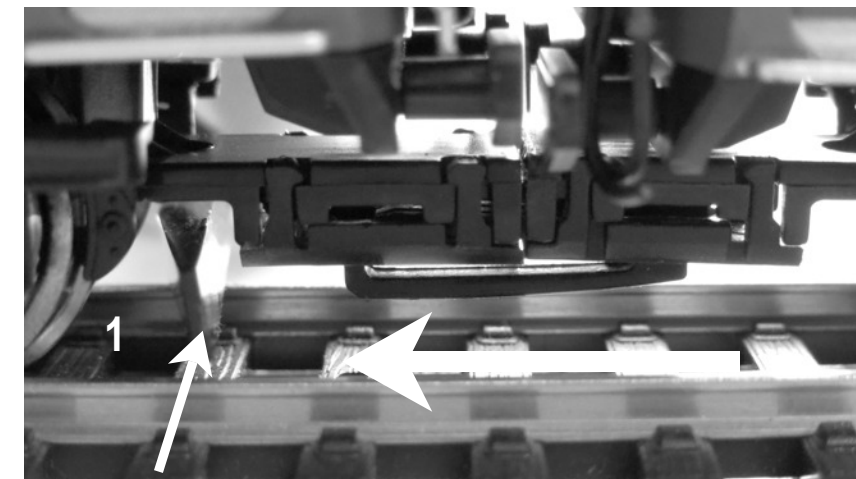
Coupling / Uncoupling Cars - use the tool provided to assist both coupling and uncoupling

Programming DCC decoder

It may be necessary to program each half train separately on a programming track if the command station cannot do both at the same time

Running on a DC layout

We recommend a smooth DC controller (not feedback)
Do not use with an electronic track cleaner
If necessary remove DCC decoders and replace with the included blanking plugs



Coupling tip

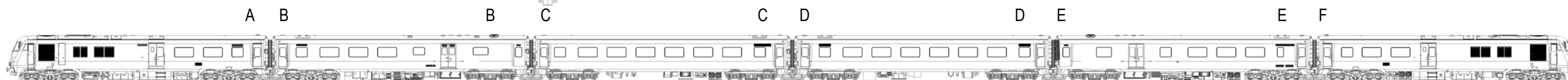
- i Connect each half train together - A/B/C and D/E/F and locate on track
- ii Use coupling tool as a support behind coupling ("1") and carefully push cars together

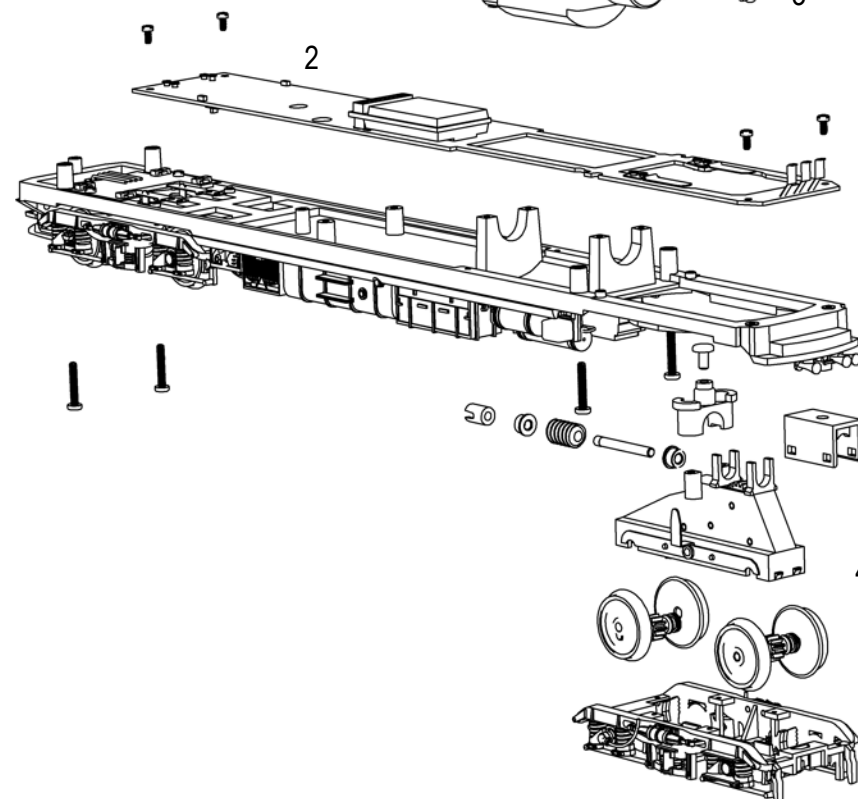
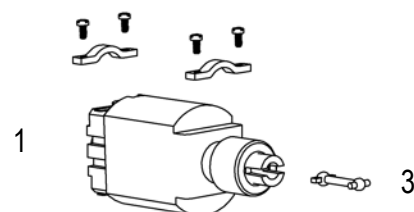
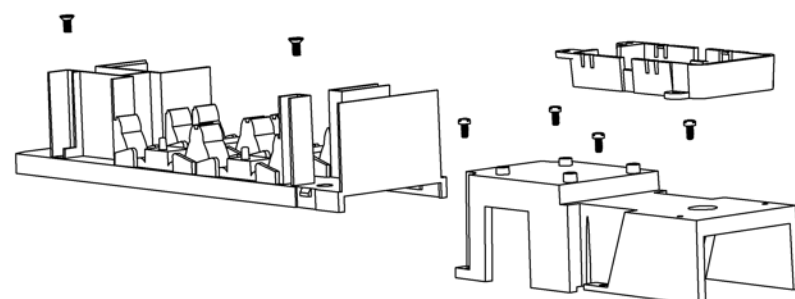
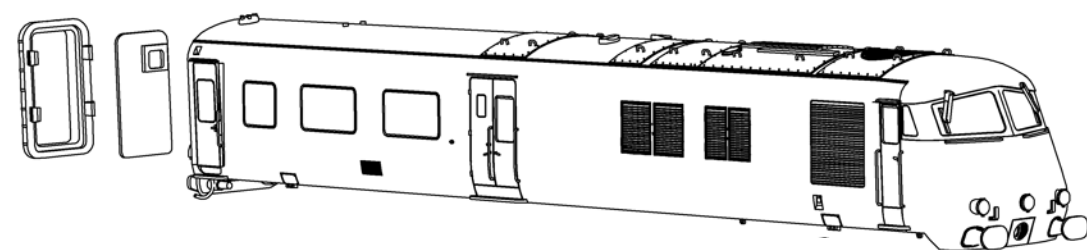


Uncoupling tip

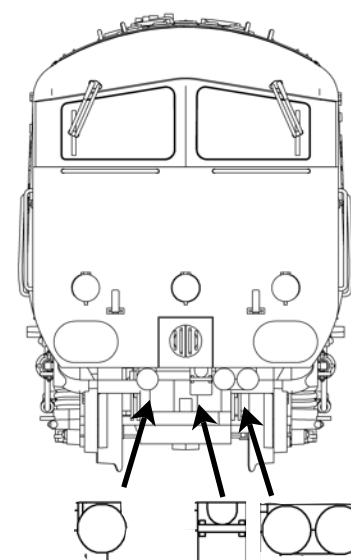
To uncouple: insert coupling tool into clip of coupling and twist to release

Watch a video on the Midland Pullman model at www.bachmann.co.uk (available to view at time of model release)



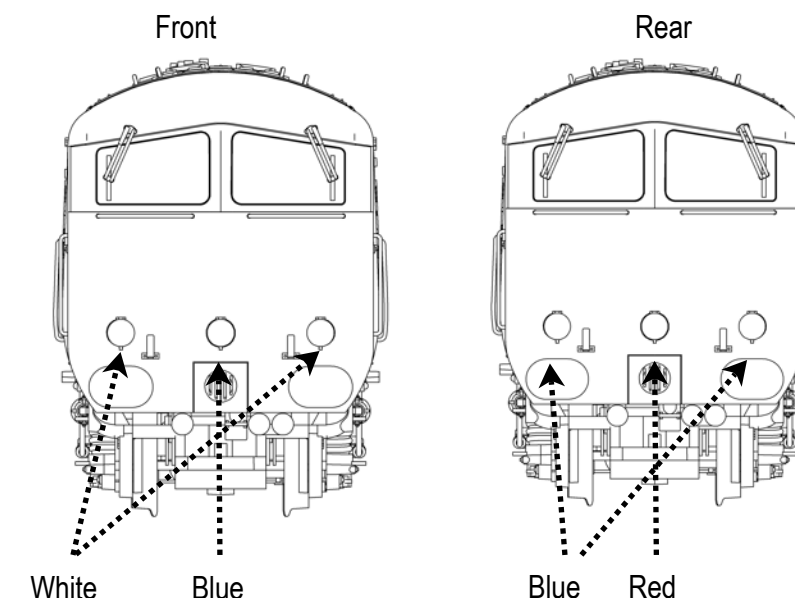


Fitting additional under cab details

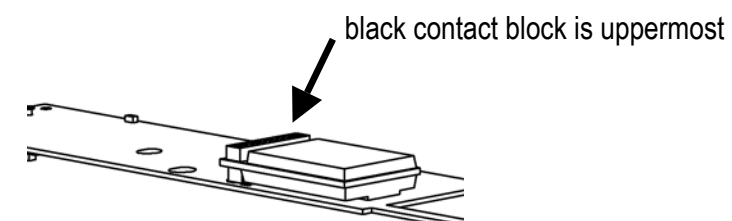


Fit horns and middle box (remove coupling)

Fitting lamp covers



Decoder / blanking plug fitting



Replacement Parts

1	motor	255-101
2	PCB	255-102
3	driveshaft	255-103
4	bogie	255-104

When ordering parts please quote the catalogue number together with the livery of the model (if appropriate) and number of the part required.

Parts are subject to availability.

Parts for this model available in retailer packs:
Couplings item ref 36-030

The model should be handled carefully as it has many finely detailed parts. It is not suitable for persons under 14 years.

Bachmann Europe Plc
Moat Way
Barwell
Leicestershire
LE9 8EY
01455 841756
www.bachmann.co.uk

