

Thank you for your choice of the Bachmann Branchline Fowler 'Patriot' 6P 4-6-0 locomotive.

Running in

The mechanism of this model requires running in (without a load) for approximately 1 hour in both directions at moderate speed.

Curves

Bachmann Branchline locomotives perform best on track with curves of second radius (approx. 18 inches / 450 mm) or greater.

Body removal

The screws securing the loco and tender shells are shown opposite.

DCC Decoder fitting to non DCC fitted loco

This model has an 21-pin mtc NMRA/NEM 660 socket in the tender for a decoder with an appropriate fitting. Remove the blanking plug and fit the decoder with the **black fitting uppermost**.

We recommend that the running in as above be carried out using a DC power supply before moving on to fit a DCC decoder to a model supplied without a decoder.

A blanking plug is provided with DCC decoder fitted models - the decoder for these models is factory fitted

Lubrication

When required, sparingly lubricate the motor bearings using plastic compatible light oil and the gear train with model grease.

Add-on detail parts

The vacuum pipes, front footsteps, cylinder drain cocks and the cab doors and sight screens fit as shown. The parts may not be suitable for use on tight curves - check before fitting permanently.

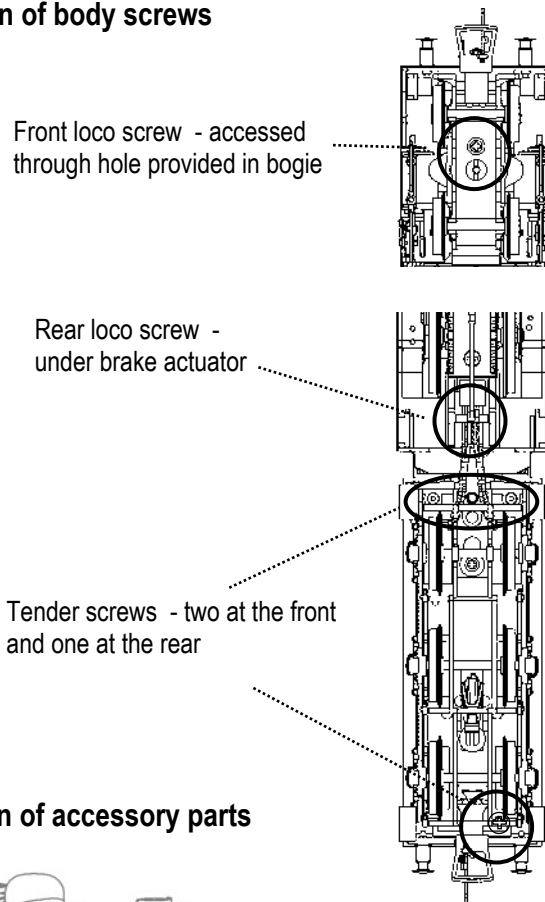
Replacement parts

When ordering parts please quote the catalogue number together with the livery of the model (if appropriate) and number of the part required. Parts are subject to availability.

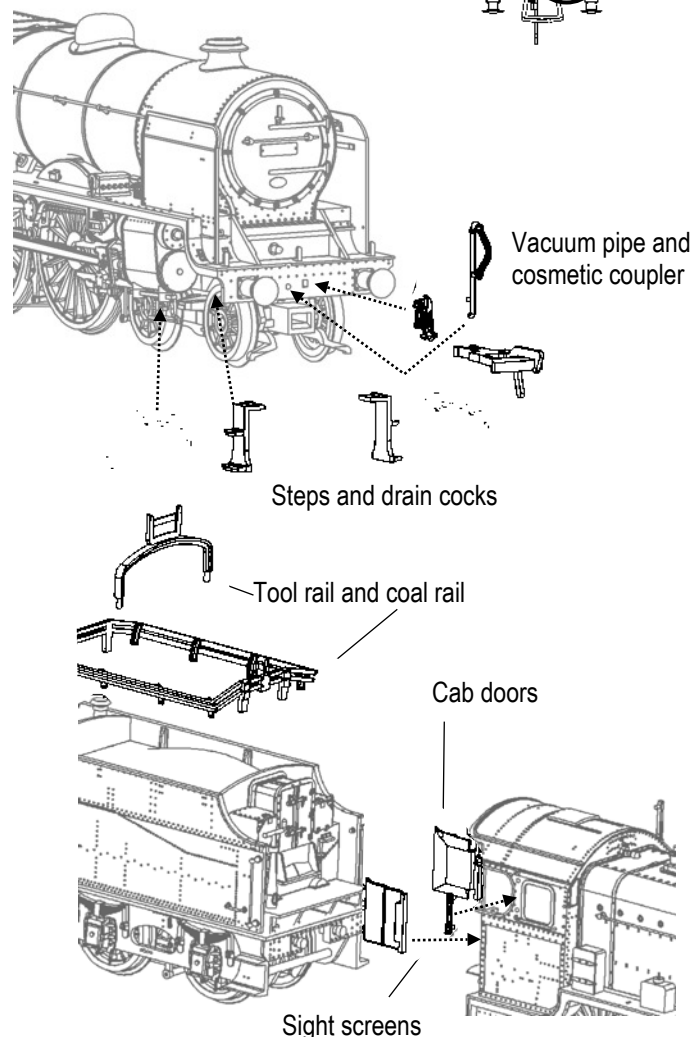
Packets of couplers (item 36-030) and buffers (item 36-032) suitable for this model are available from retailers.

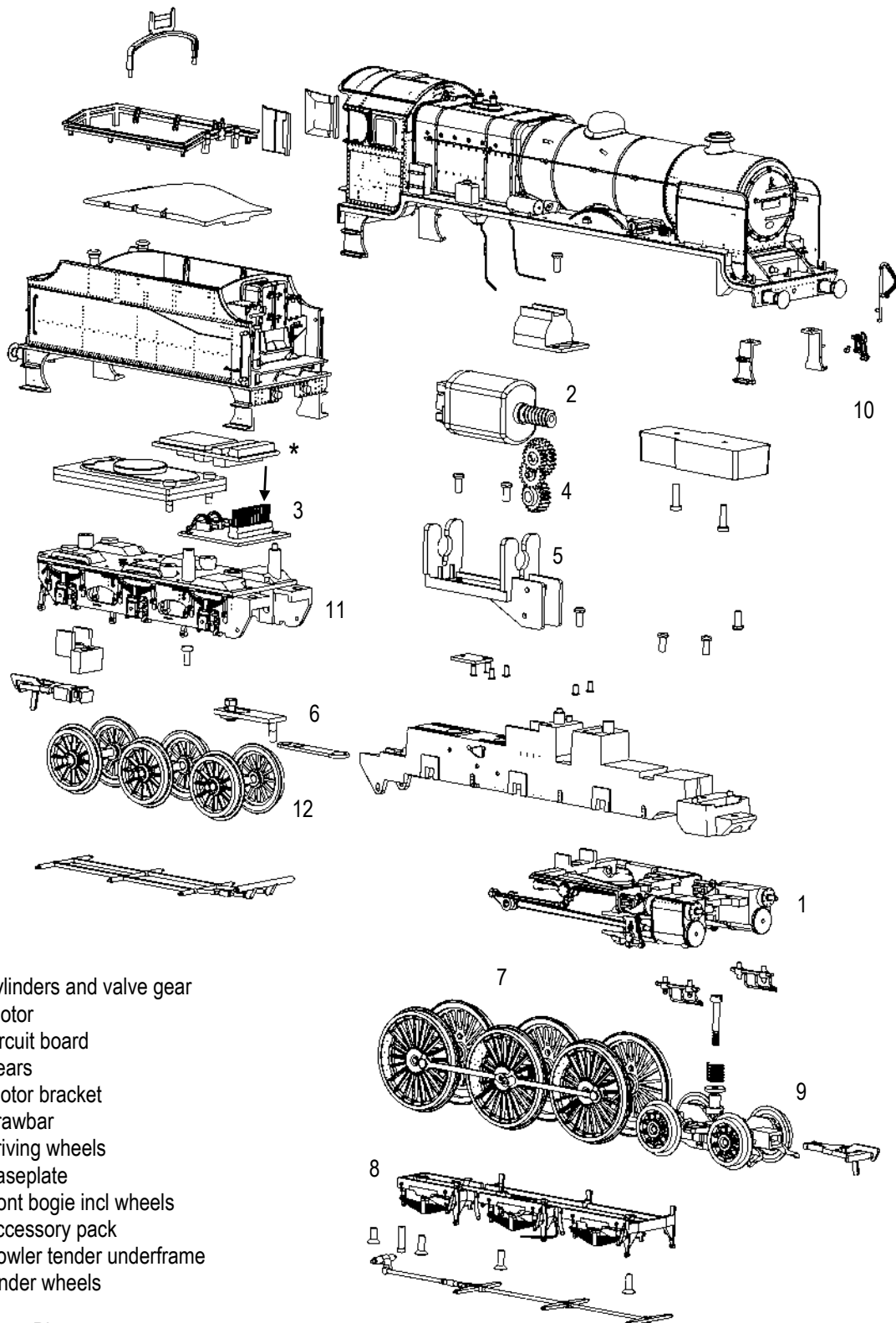
The model should be handled carefully as it has many finely detailed parts. It is not suitable for persons under 14 years.

Location of body screws



Location of accessory parts





Decoder or blanking plug fit with black fitting uppermost *

Parts

- 1 210-103 cylinders and valve gear
- 2 210-106 motor
- 3 350-004 circuit board
- 4 210-112 gears
- 5 210-113 motor bracket
- 6 250-130 drawbar
- 7 210-117 driving wheels
- 8 210-118 baseplate
- 9 210-121 front bogie incl wheels
- 10 210-124 accessory pack
- 11 210-015 Fowler tender underframe
- 12 210-027 tender wheels

Bachmann Europe Plc
 Moat Way,
 Barwell,
 Leicestershire,
 LE9 8EY
 01455 841756 www.bachmann.co.uk