

Thank you for your choice of the Bachmann Branchline Robinson O4 2-8-0 locomotive.

Running In

The mechanism of this model requires running in (without a load) for approximately 1 hour in each direction at moderate speed.

Curves

Bachmann Branchline locomotives are not suitable for use on track tighter than second radius (approx 18 inches).

Body removal

Locomotive

Remove the two screws indicated.

Tender

Remove the four screws indicated

DCC Decoder fitting to non DCC fitted loco

This model has an 21-pin mtc socket in the tender for a decoder with an appropriate fitting. The decoder back emf CV settings may need to be adjusted in line with the decoder fitting instructions.

We recommend that the running in as above be carried out using a DC power supply before moving on to fit a DCC decoder.

There is space in the tender and loudspeaker connectors on the PCB to fit an aftermarket sound decoder.

Any customer fitted decoder should be removed from the model in the event of service being required from Bachmann Europe plc.

Lubrication

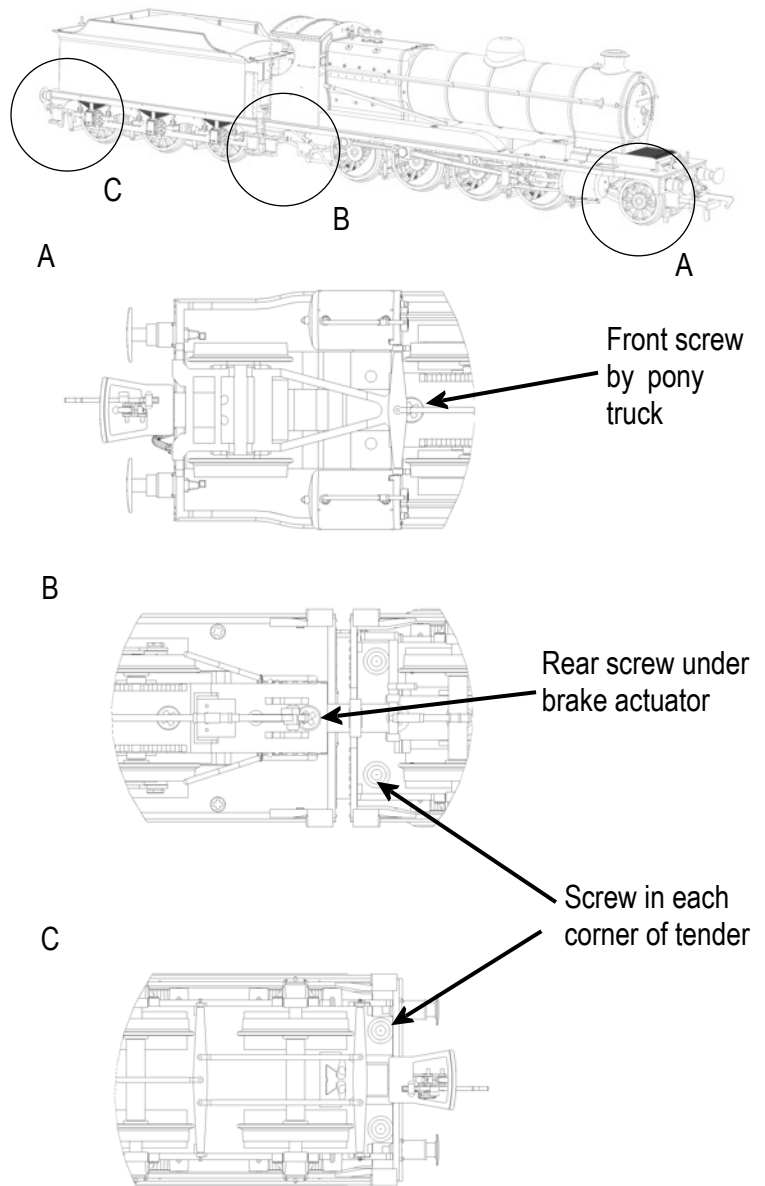
When required, sparingly lubricate the motor bearings using plastic compatible light oil and the gear train with model grease.

Buffer beam pipes and coupler.

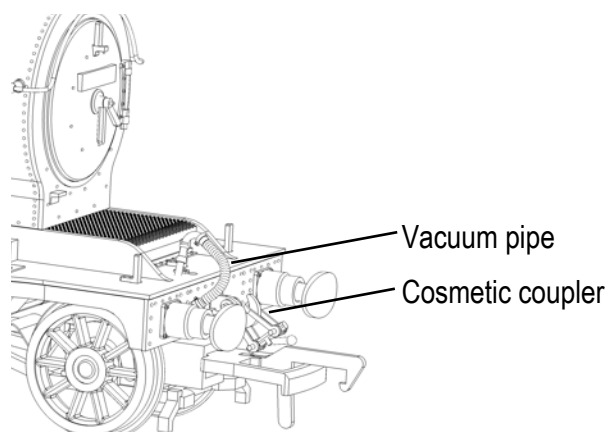
The locomotive vacuum pipes fit and cosmetic coupler fit as shown.

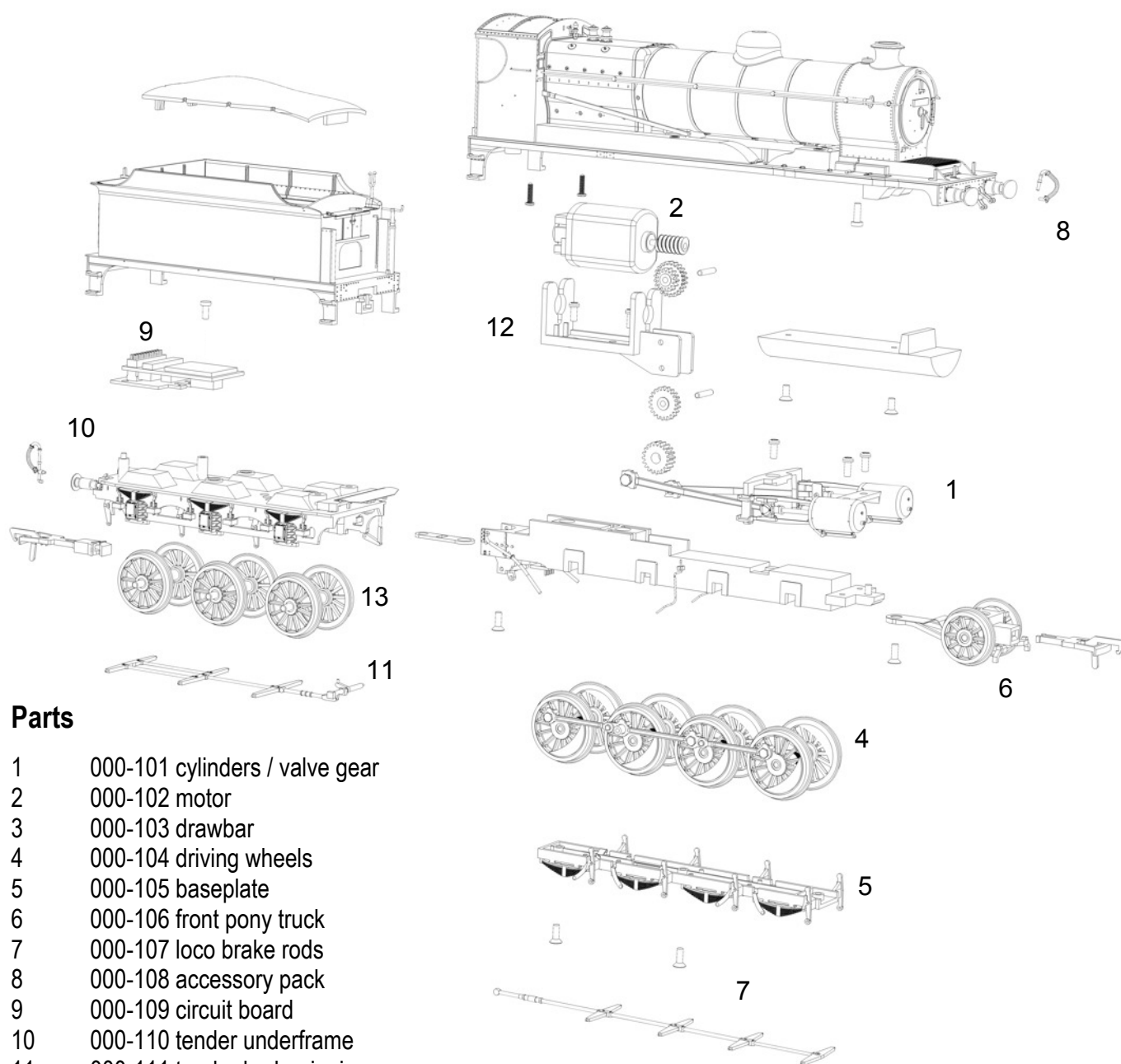
The model should be handled carefully as it has many finely detailed parts. It is not suitable for persons under 14 years.

Location of body securing screws



Location of add-on details





Parts

- 1 000-101 cylinders / valve gear
- 2 000-102 motor
- 3 000-103 drawbar
- 4 000-104 driving wheels
- 5 000-105 baseplate
- 6 000-106 front pony truck
- 7 000-107 loco brake rods
- 8 000-108 accessory pack
- 9 000-109 circuit board
- 10 000-110 tender underframe
- 11 000-111 tender brake rigging
- 12 000-112 motor bracket
- 13 000-113 tender wheels

Replacement parts

When ordering parts please quote the catalogue number together with the livery of the model (if appropriate) and number of the part required. Parts are subject to availability.

Packets of couplers (item 36-030) suitable for this model are available from retailers.

Bachmann Europe Plc

Moat Way, Barwell, Leicestershire, LE9 8EY

Tel: 01455 841756

www.bachmann.co.uk

ROD 2-8-0 rev 1 07/11

E3100-IS001