

# GWR 3000 Class ROD 2-8-0

Thank you for your choice of the Bachmann Branchline GWR ROD 2-8-0 locomotive.

## Running In

The mechanism of this model requires running in (without a load) for approximately 1 hour in each direction at moderate speed.

## Curves

Bachmann Branchline locomotives are not suitable for use on track tighter than second radius (18 inches).

## Body removal

### Locomotive

Remove the two screws indicated.

### Tender

Remove the four screws indicated

## DCC Decoder fitting to non DCC fitted loco

This model has an 21-pin mtc socket in the tender for a decoder with an appropriate fitting e.g. Bachmann 36-554. The decoder back emf CV settings may need to be adjusted in line with the decoder fitting instructions.

We recommend that the running in as above be carried out using a DC power supply before moving on to fit a DCC decoder.

There is space in the tender and loudspeaker connectors on the PCB to fit an aftermarket sound decoder.

Any customer fitted decoder should be removed from the model in the event of service being required from Bachmann Europe plc.

## Lubrication

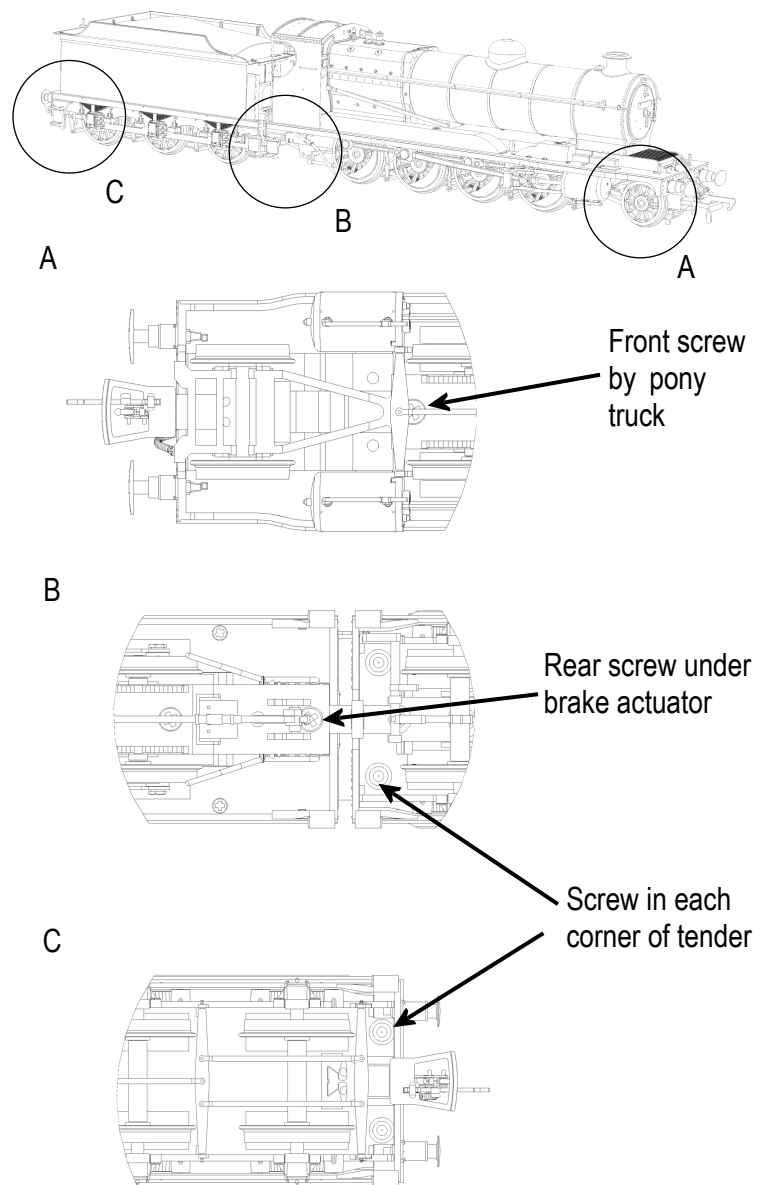
When required, sparingly lubricate the motor bearings using plastic compatible light oil and the gear train with model grease.

## Buffer beam pipes and coupler.

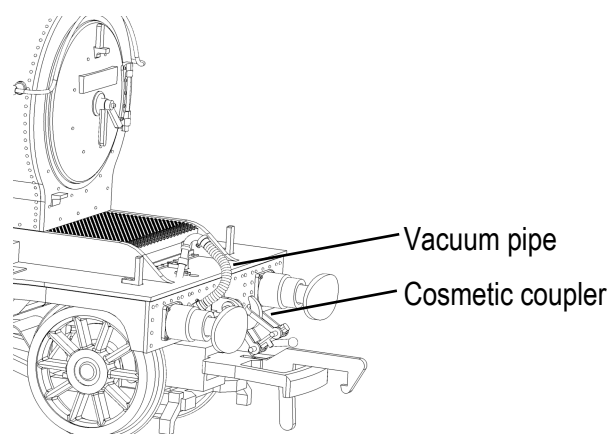
The locomotive vacuum pipes fit and cosmetic coupler fit as shown.

**The model should be handled carefully as it has many finely detailed parts. It is not suitable for persons under 14 years.**

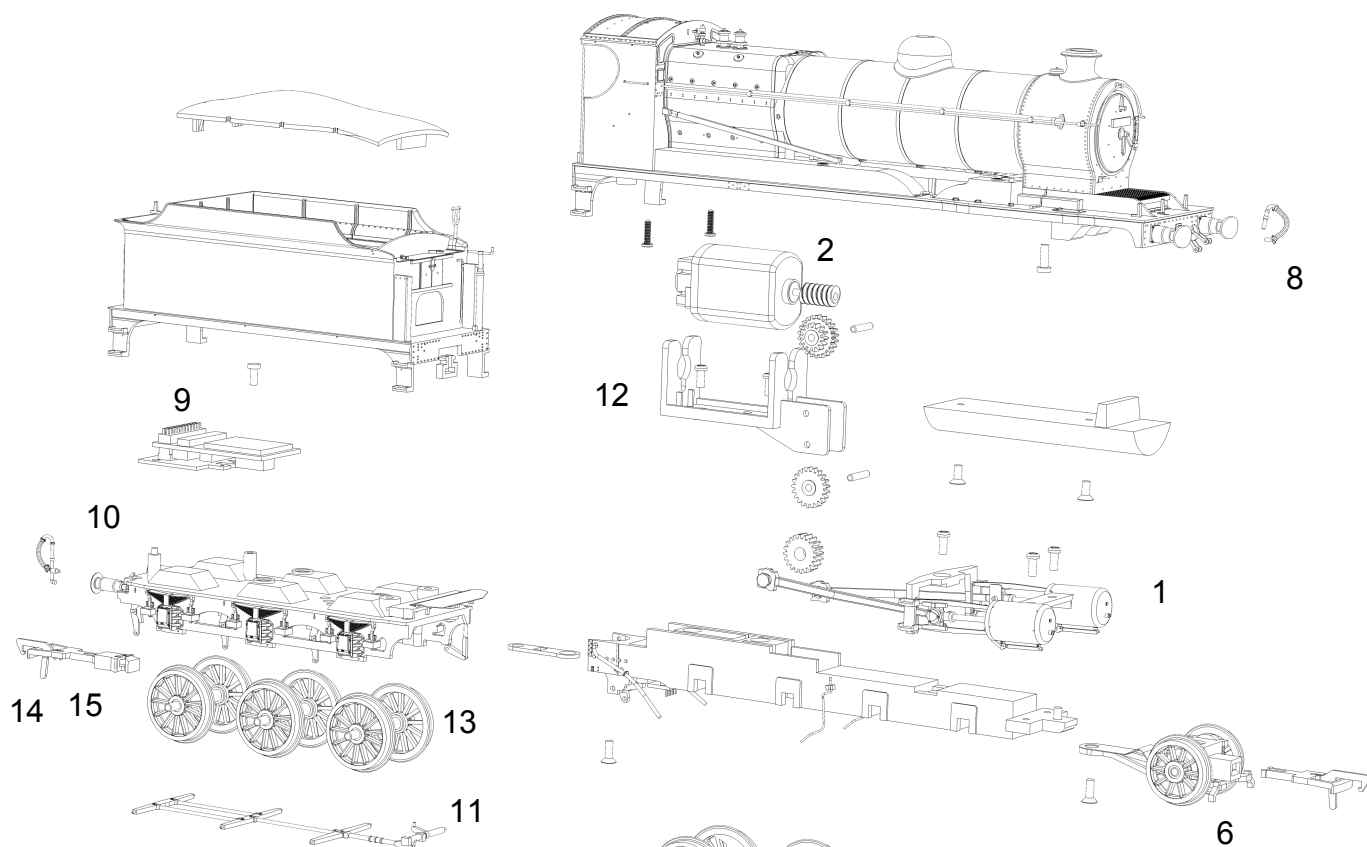
## Location of body securing screws



## Location of add-on details



# GWR 3000 Class ROD 2-8-0



## Parts

- 1 000-101 cylinders / valve gear
- 2 000-102 motor
- 3 000-103 drawbar
- 4 000-104 driving wheels
- 5 000-105 baseplate
- 6 000-106 front pony truck
- 7 000-107 loco brake rods
- 8 000-108 accessory pack
- 9 000-109 circuit board
- 10 000-110 tender underframe
- 11 000-111 tender brake rigging
- 12 000-112 motor bracket
- 13 000-113 tender wheels
- 14 BL1999 coupling
- 15 BL2006 NEM Pocket

## Replacement parts

When ordering parts please quote the catalogue number together with the livery of the model (if appropriate) and number of the part required. Parts are subject to availability.

Packets of couplers (item 36-030) suitable for this model are available from retailers.

## Bachmann Europe Plc

Moat Way, Barwell, Leicestershire, LE9 8EY

Tel: 01455 841756

[www.bachmann.co.uk](http://www.bachmann.co.uk)

ROD 2-8-0 rev 1 07/11

E3112-IS001