

Thank you for your choice of the Graham Farish BR Standard Class 3 2-6-2T locomotive.

Running in

The mechanism of this model requires running in (without a load) for approximately 1 hour in each direction at moderate speed.

Curves

This locomotive performs best on track with curves of second radius (**approx. 10.5 inches / 260 mm**) or greater. Please check clearances for the front and rear steps before final fitting.

Body removal

The bodyshell is secured by the screws underneath shown on page 4

DCC Decoder fitting to non DCC fitted loco

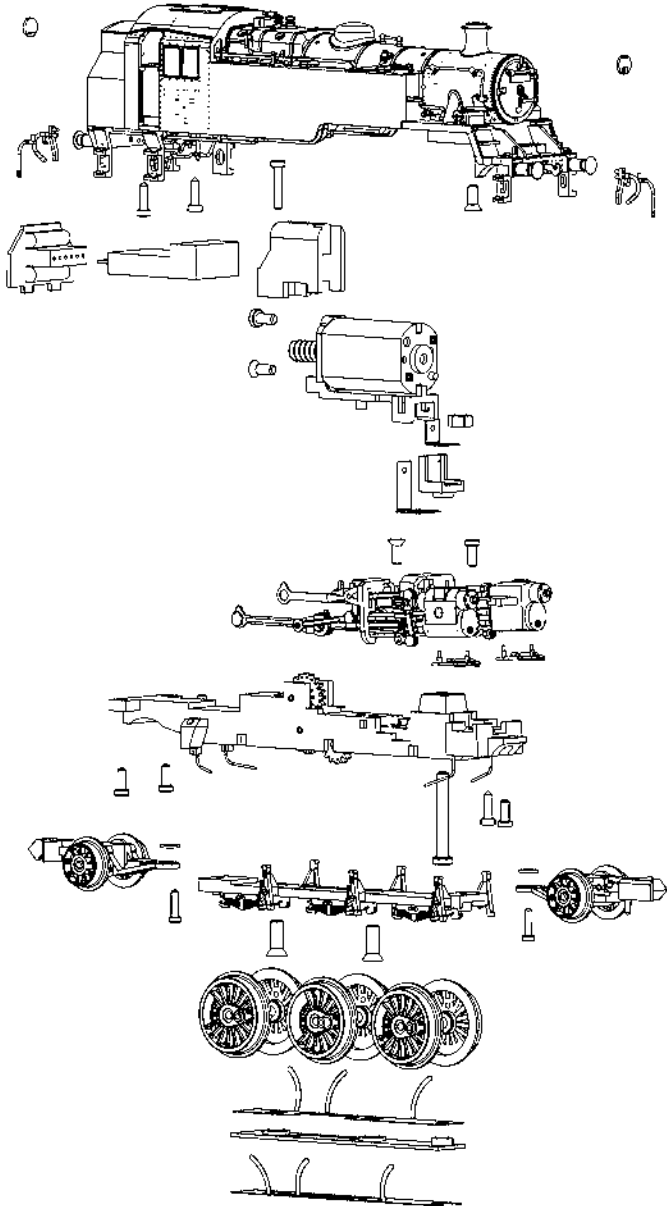
This model has an 6-pin NMRA/NEM 651 socket in the tender suitable for a decoder with an appropriate plug. Align the decoder as indicated.

Run in as above using a DC power supply before fitting a DCC decoder

Lubrication

When required, sparingly lubricate the motor bearings using plastic compatible light oil. Suitable lubricants are Bachmann E-Z Lube item 99984 or Woodland Scenics 'HobbyLube' Lite Oil item HL654.

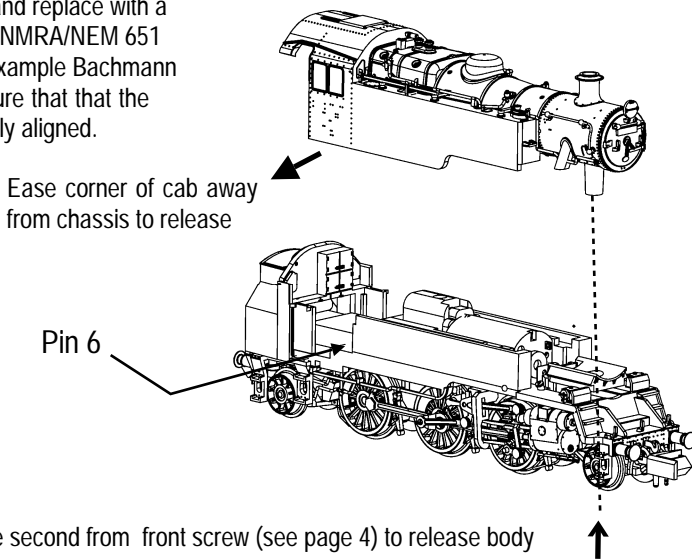
Do not run Graham Farish N scale models with a DCC controller unless a DCC decoder has been fitted as damage to the motor may result if run as analogue loco "0"



Fitting DCC decoder

Remove loco shell only (see page 4)

Carefully remove the blanking board above the motor and replace with a decoder having a NMRA/NEM 651 6-pin fitting - for example Bachmann item 36-558. Ensure that that the decoder is correctly aligned.



Add-on detail parts

Parts fit as shown on the diagram:

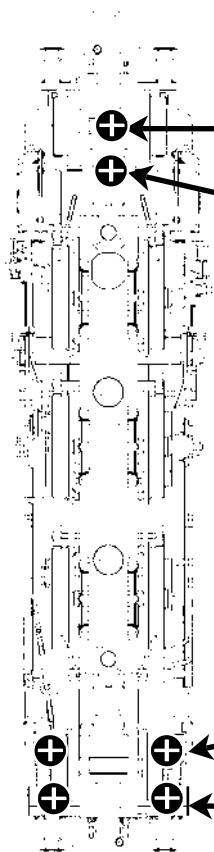
- vacuum / steam pipes and cosmetic couplings to bufferbeams
- steps to front and rear corners
- tools to tool holder on offside tank top
- train headcode disc to lampirons on smokebox and bunker

Parts subject to availability - please contact the Service Department

Replacement parts in retail packs

Couplings - item 379-405

Bodyshell fixing screws



Screws behind front pony truck

First screw - secures chassis to running plate

Second screw - secures shell of loco to running plate

Screws at rear of loco

Screw each side secures bunker to chassis

Screw each side secures chassis to running plate

Bachmann Europe Plc

Moat Way, Barwell, Leicestershire, LE9 8EY

Tel: 01455 841756

www.bachmann.co.uk

3MT rev 2 03/12 F7232-IS002

© Bachmann Europe plc 2012



12V - 17V === 15V ~

Printed in China