

Thank you for your choice of the Bachmann Branchline WD Austerity 2-8-0 tender locomotive.

Running in

The mechanism of this model requires running in (without a load) for approximately 1 hour in each direction at moderate speed.

Curves

Bachmann Branchline locomotives perform best on curves of second radius or greater (approx. 18 inches / 450 mm).

Bodyshell removal

Loco - remove the three screws under the chassis as indicated on the diagram (right). Ease handrails out of cabside and rotate out of the way

Tender - remove the three screws indicated

DCC Decoder fitting to non DCC fitted loco

This model has an 21-pin socket in the tender for a decoder. Remove the DC blanking plug and fit the decoder to the pins with the black fitting uppermost. We recommend that the running in as above be carried out using a DC power supply before moving on to fit a DCC decoder

Lubrication

When required, sparingly lubricate the motor bearings using plastic compatible light oil and the gear train with model grease.

Replacement parts

When ordering parts please quote the catalogue number together with the livery of the model (if appropriate) and number of the part required. Parts are subject to availability.

The model should be handled carefully as it has many finely detailed parts. It is not suitable for persons under 14 years.

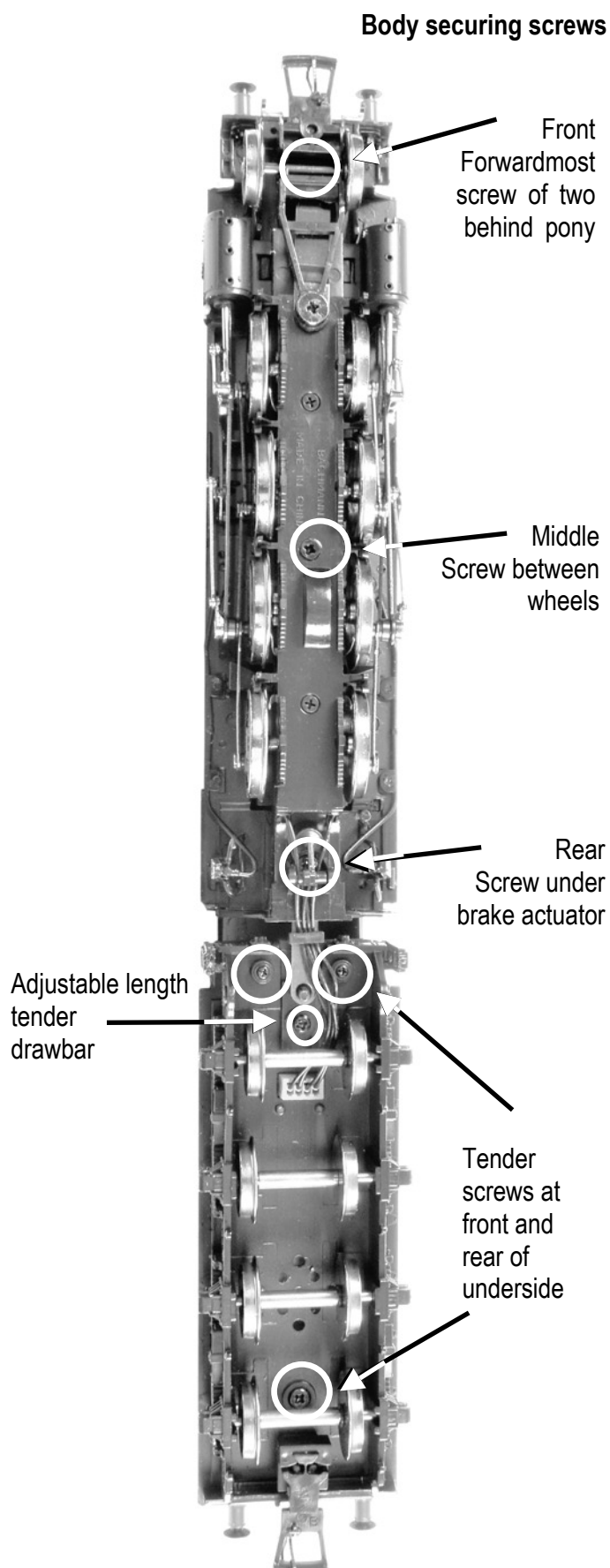
Bachmann Europe Plc

Moat Way, Barwell, Leicestershire, LE9 8EY
01455 841756

www.bachmann.co.uk

WD rev 2 03/13

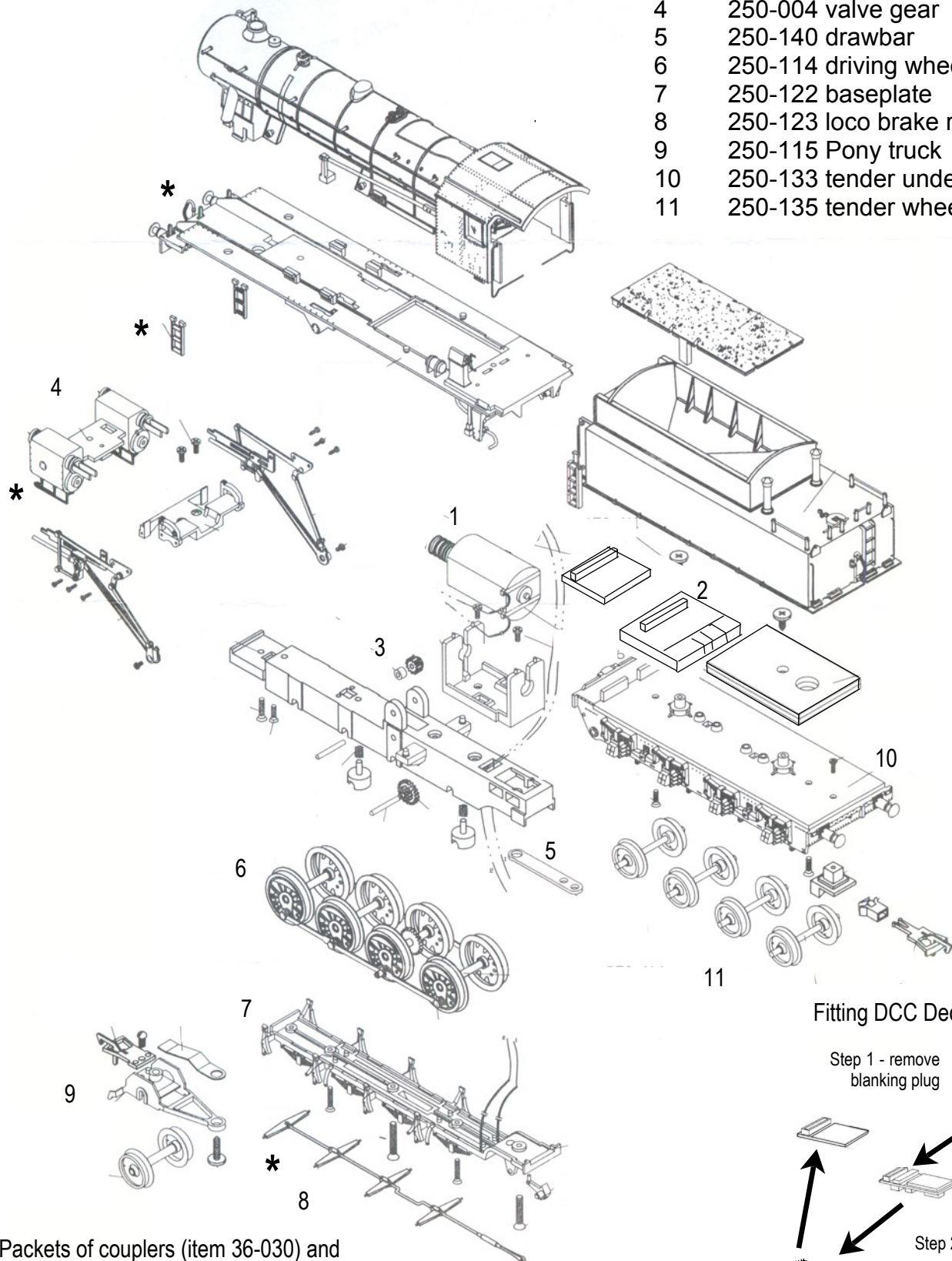
E3225-IS004



* Parts included in addon pack

Parts

- 1 250-106 motor
- 2 250-104 circuit board
- 3 250-112 gears
- 4 250-004 valve gear
- 5 250-140 drawbar
- 6 250-114 driving wheels
- 7 250-122 baseplate
- 8 250-123 loco brake rigging
- 9 250-115 Pony truck
- 10 250-133 tender underframe
- 11 250-135 tender wheels



Fitting DCC Decoder

Step 1 - remove
blanking plug

black fitting
uppermost

Step 2 - fit decoder
to pins

Packets of couplers (item 36-030) and buffers (item 36-035) suitable for this model are available from retailers.