

Thank you for your choice of the Bachmann Branchline Class 419 Motor Luggage Van.

## General

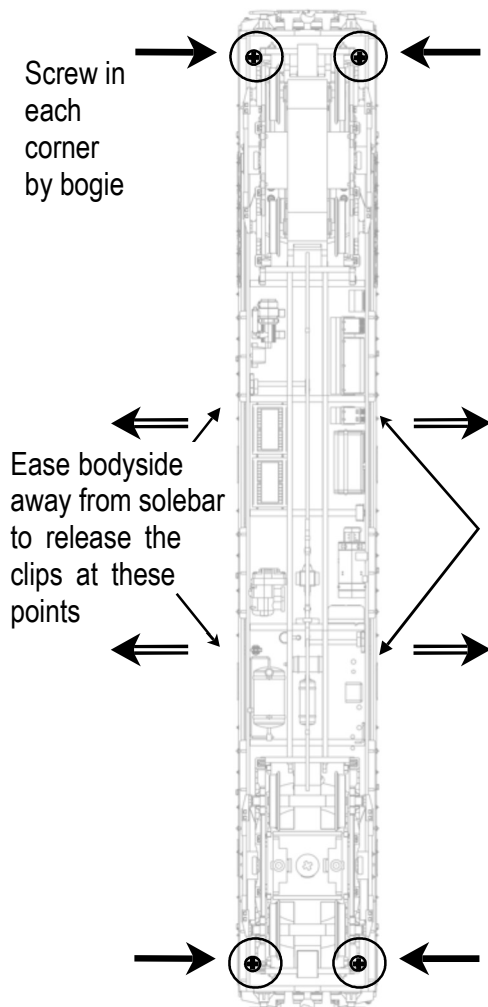
The mechanism of this model requires running in (without a load) for approximately half an hour in each direction at moderate speed to allow the gear train to bed in.

When required, sparingly lubricate the motor bearings using plastic compatible light oil and the gear train with model grease.

Bachmann Branchline trains perform best on second radius (approx 18 inches) or greater.

## Body removal

The body is secured by screws in the 4 corners of the underside of the body as shown below. Ease the sides of the body away from the solebar, if necessary slide strips of thin card or plastic each side as each clip is released to hold the clips open. Take care to avoid damage to the underfloor equipment details.



## DCC Decoder fitting to DC model

This model has a 21-pin connector for a decoder.

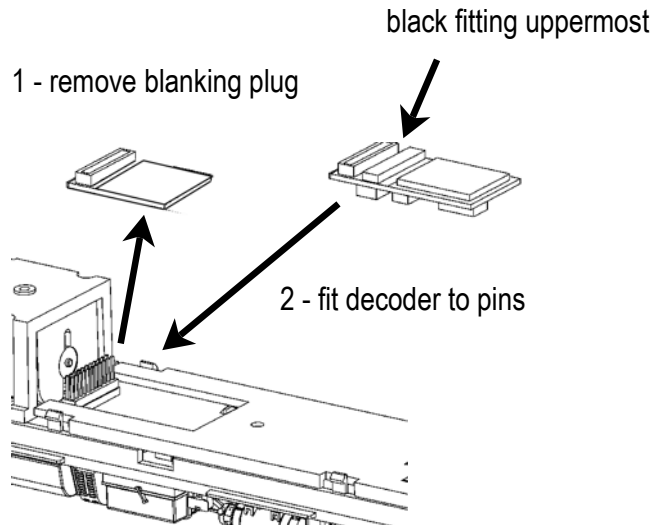
Use either a decoder with matching fitting (for example Bachmann 36-554) or the Bachmann 36-559 8/21-pin adaptor to use a decoder with an 8-pin plug.

It is recommended to run in a DC model first on a DC power supply before installing a decoder.

Carefully remove the blanking board and locate the decoder onto the pins on the PCB as shown below following the instructions included with the decoder: The decoder fits so that the black contact block fitting is uppermost.

## Control of lights with DCC

When using a decoder with the appropriate number of function outputs, the onboard end light blinds can be controlled on/off with F0.



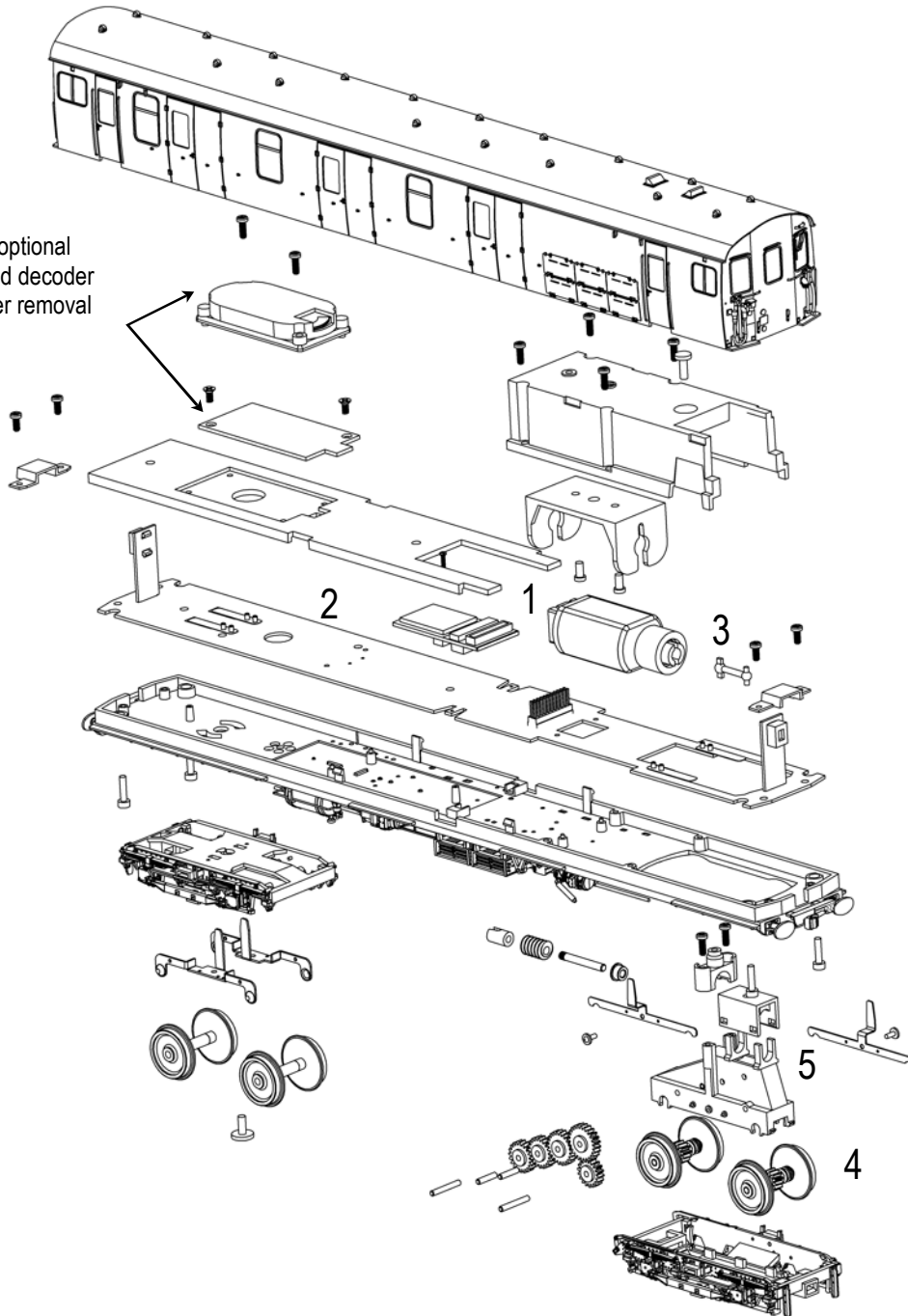
**The model should be handled carefully as it has many finely detailed parts. It is not suitable for persons under 14 years.**

## Bachmann Europe Plc

Moat Way  
Barwell  
Leicestershire  
LE9 8EY  
01455 841756  
www.bachmann.co.uk

E3126 - IS001  
02/12 Rev 1

Speaker box for optional aftermarket sound decoder speaker - fits after removal of panel on floor



## Replacement Parts

1	motor	265-001
2	PCB 21pin	265-002
3	driveshaft	265-003
4	driving wheels	265-004
5	driven bogie	265-005

When ordering parts please quote the catalogue number together with the livery of the model (if appropriate) and number of the part required.

Parts are subject to availability.

Parts for this model available in retailer packs:  
 Couplings item ref 36-030  
 21 pin blanking plug item ref 36-058