

Thank you for your choice of the Bachmann Branchline Class 47 diesel locomotive.

## General

The mechanism of this model requires running in (without a load) for approximately 1 hour in each direction at moderate speed to allow the gear train to bed in.

Bachmann Branchline locomotives are not suitable for use on track tighter than second radius (approx. 18 inches).

## Body removal

Remove the screws indicated 'A' beside the bogies and at each end of the locomotive and unclip by each cab door, indicated 'B'.

## DCC Decoder fitting to non DCC fitted loco

This model has a 21-pin interface for a decoder with an appropriate fitting. Fit the decoder as indicated over leaf with the black socket fitting uppermost. It is recommended that the running in as above be carried out using a DC power supply before moving on to fit a DCC decoder.

If this is a 'DCC Onboard' or 'DCC Sound' model please also refer the accompanying DCC instruction sheet.

## Lights

When the locomotive is fitted with a DCC decoder the lights can be turned on/off with these handset keys:

F0 Directional head and tail lights

F1 Cablights

The tail lights and / or cablights can be separately turned off using the switch beneath the fuel/water tank

## Lubrication

When required, sparingly lubricate the motor bearings using plastic compatible light oil and the gear train with model grease as indicated on the diagram.

## Bufferbeam parts

The locomotive dummy screw coupling and the brake and steam pipes fit as shown on the diagram. The pipes are not suitable for use with the functional coupler on tight curves.

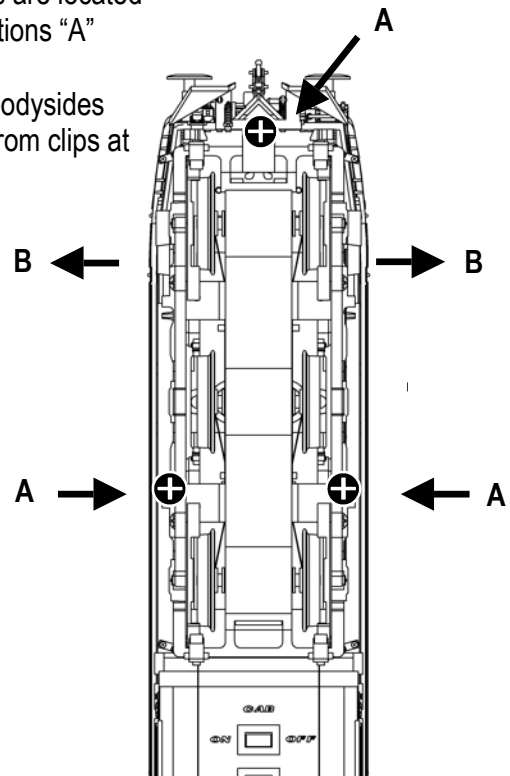
The model should be handled carefully as it has many finely detailed parts. It is not suitable for persons under 14 years.

Bachmann Europe Plc  
Moat Way, Barwell, Leicestershire, LE9 8EY  
01455 841756 [www.bachmann.co.uk](http://www.bachmann.co.uk)

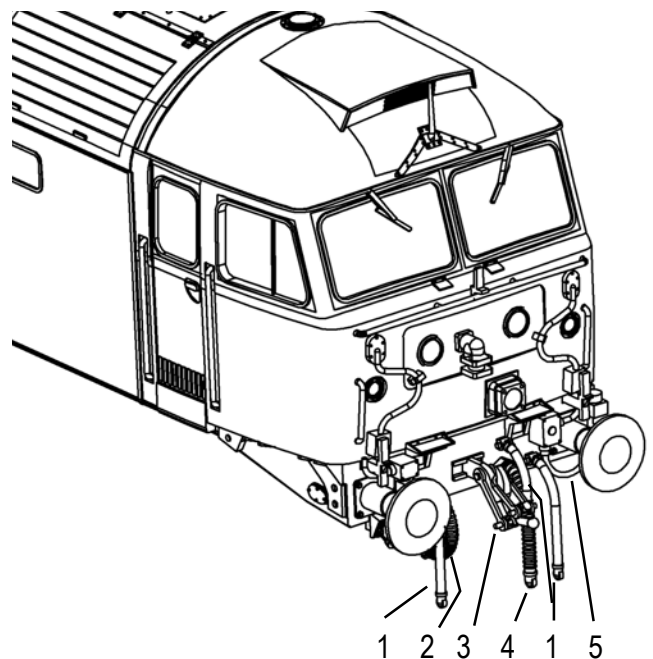
## Location of body fixing screws and clips

Screws are located at positions "A"

Ease bodysides away from clips at "B"



## Bufferbeam pipes etc



- |                 |                               |
|-----------------|-------------------------------|
| 1 Airbrake hose | 4 Steam heat pipe (if fitted) |
| 2 Vacuum pipe   | 5 ETS connector (if fitted)   |
| 3 Coupling      |                               |

Optional snowplough fits to NEM pocket on removal of the coupling

## Replacement Parts

- 1 800-006 motor
- 2 800-008 PCB
- 3 800-010 motor bracket
- 4 800-009 driveshaft
- 5 800-013 underframe
- 6 800-032 driving wheels
- 7 800-022 bogie complete
- 8 800-030 bogie frame
- 9 800-014 buffer beam pack

A spare blanking board is included with DCC decoder fitted models

When ordering parts please quote the catalogue number together with the livery of the model (if appropriate) and number of the part required. Parts are subject to availability. Packets of couplers (item 36-030) suitable for this model are available from retailers

**The model should be handled carefully as it has many finely detailed parts. It is not suitable for persons under 14 years.**

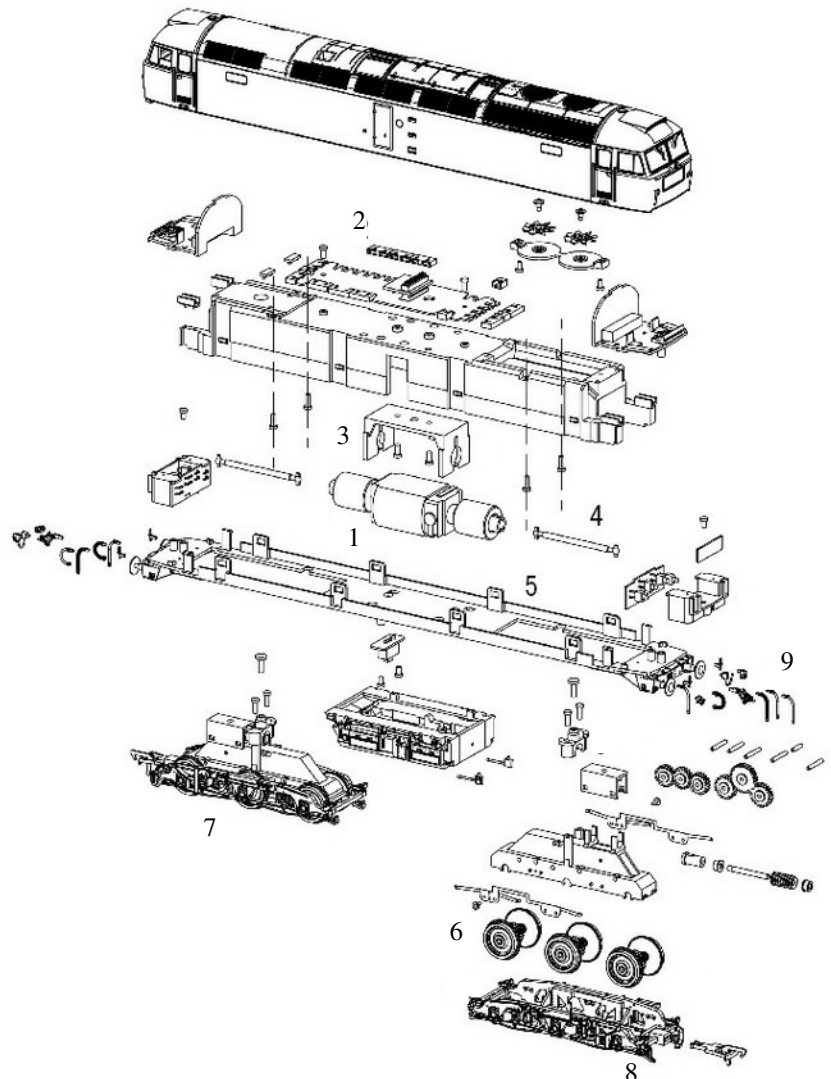
### Bachmann Europe Plc

Moat Way  
Barwell  
Leicestershire  
LE9 8EY  
01455 841756  
www.bachmann.co.uk

© Bachmann Europe plc 2012



E3280-IS002  
07/14 Rev 2  
Printed in China



### Location and alignment of 21-pin DCC decoder

1 - remove blanking plug  
(If necessary use pliers to grip edges of the PCB and ease off pins)

2 - fit decoder to pins with black fitting uppermost

